



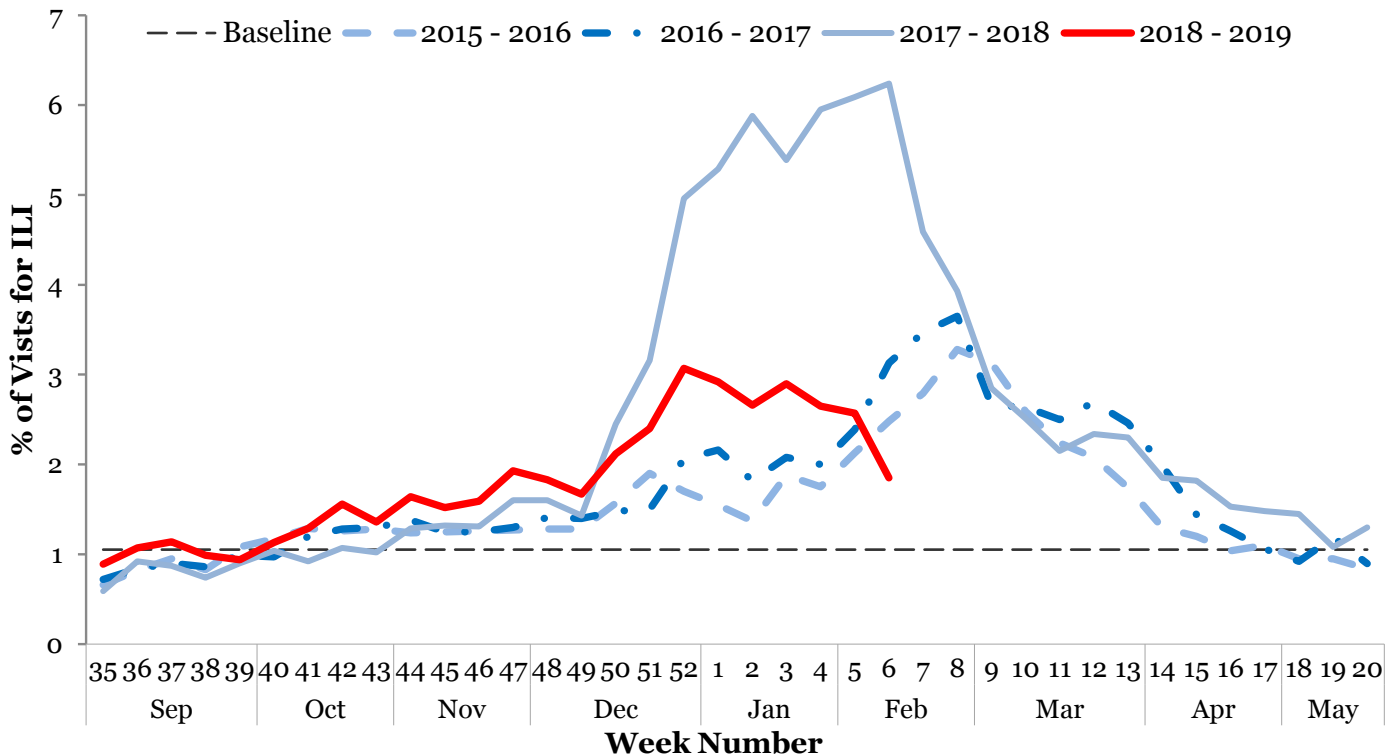
I. Influenza-like Illness (ILI) Weekly Summary

- Influenza activity is currently **high**. This risk assessment is based on:
 - The proportion of emergency department visits for ILI was 1.85%, above the regional baseline of 1.05%, and has been decreasing for three weeks.
 - The proportion of outpatient provider visits for ILI was 1.05%, above the regional baseline of 0.73%, and has been decreasing for one week.
 - The proportion of deaths associated with pneumonia or influenza was 6.68%, below the epidemic threshold of 7.00%.
- Five hundred eighty-one (18.24%) laboratory specimens tested positive for influenza: 43 influenza A H1N1, 16 influenza A H3N2, 505 influenza A unknown subtype, and 17 influenza B.
- Nine influenza-associated intensive care unit (ICU) hospitalizations were reported during Week 6. Ninety-one ICU hospitalizations have been reported since Week 35.
- Since Week 35, 0 influenza-associated pediatric deaths, 0 clusters of ILI in schools, and 7 outbreaks of influenza in congregate care settings have been reported.
- **Current recommendations:** Promote vaccination, respiratory hygiene, and prompt treatment with antivirals. Facilities may wish to consider temporary visitor restrictions.

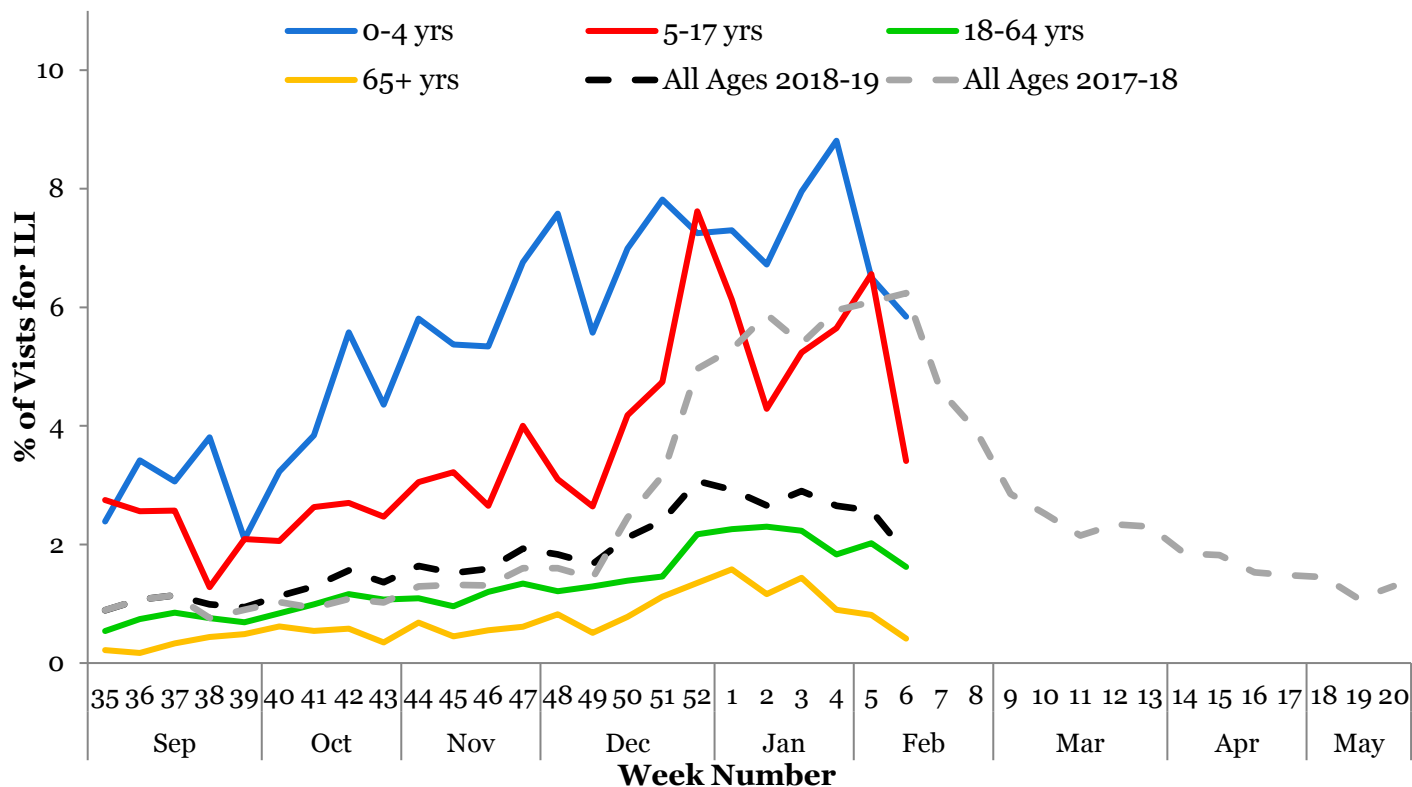
Note: Surveillance for ILI in suburban Cook County involves the weekly collection of data from hospitals, physicians' offices, and laboratories. Thank you to all of our surveillance partners for their help in collecting this information.

II. Influenza Activity Level / Disease Burden

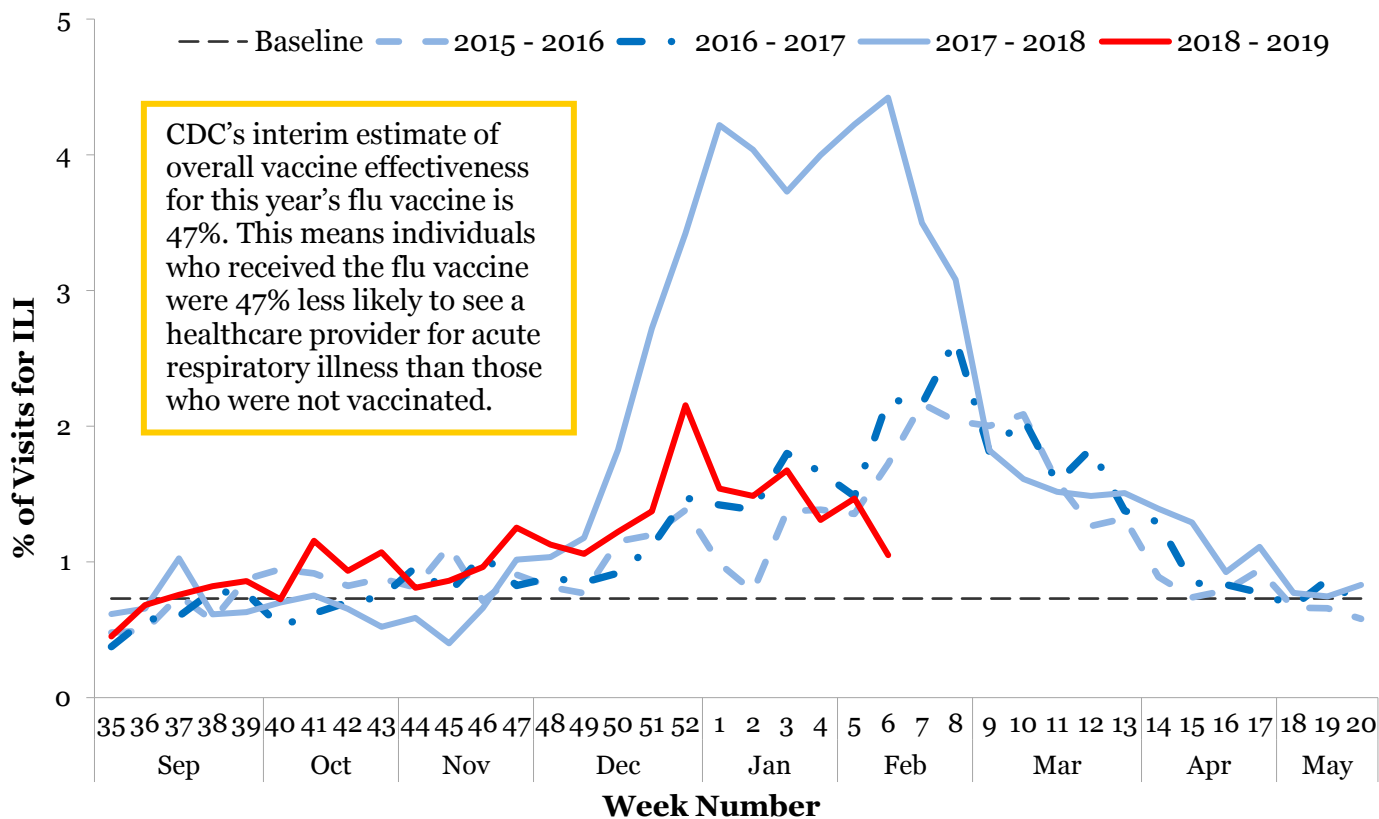
Emergency Department Syndromic Surveillance¹



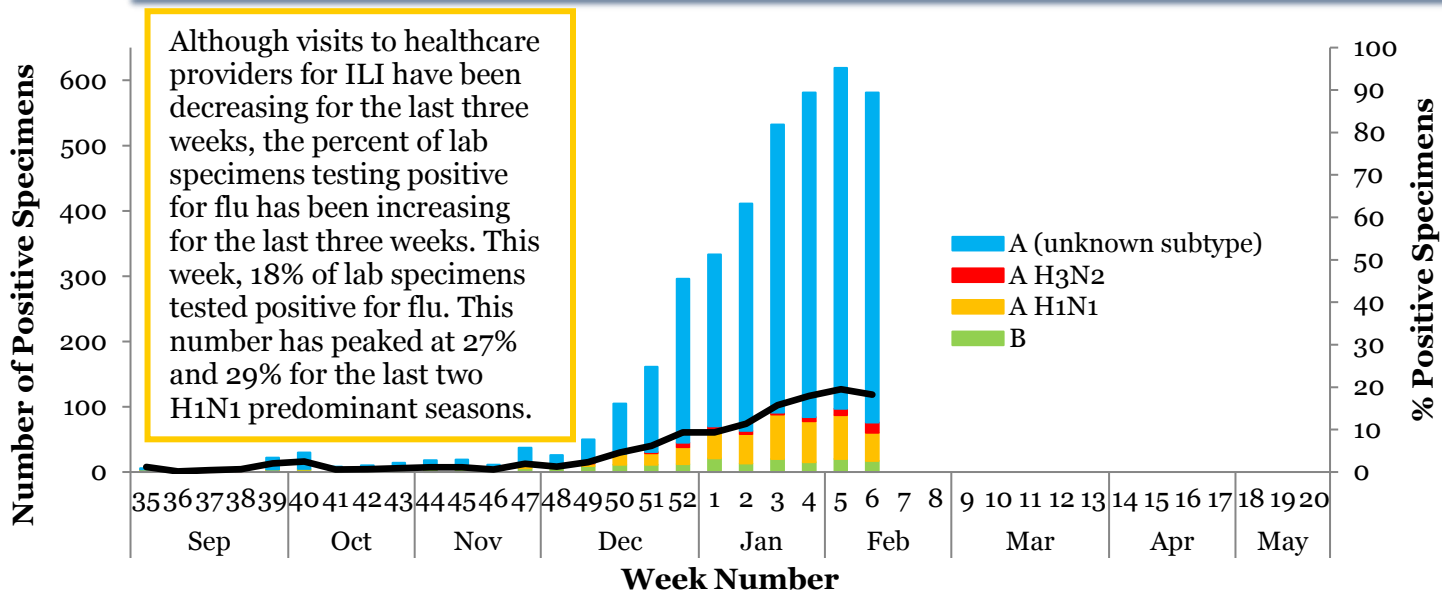
Syndromic Surveillance by Age Group¹



Outpatient Sentinel Providers²



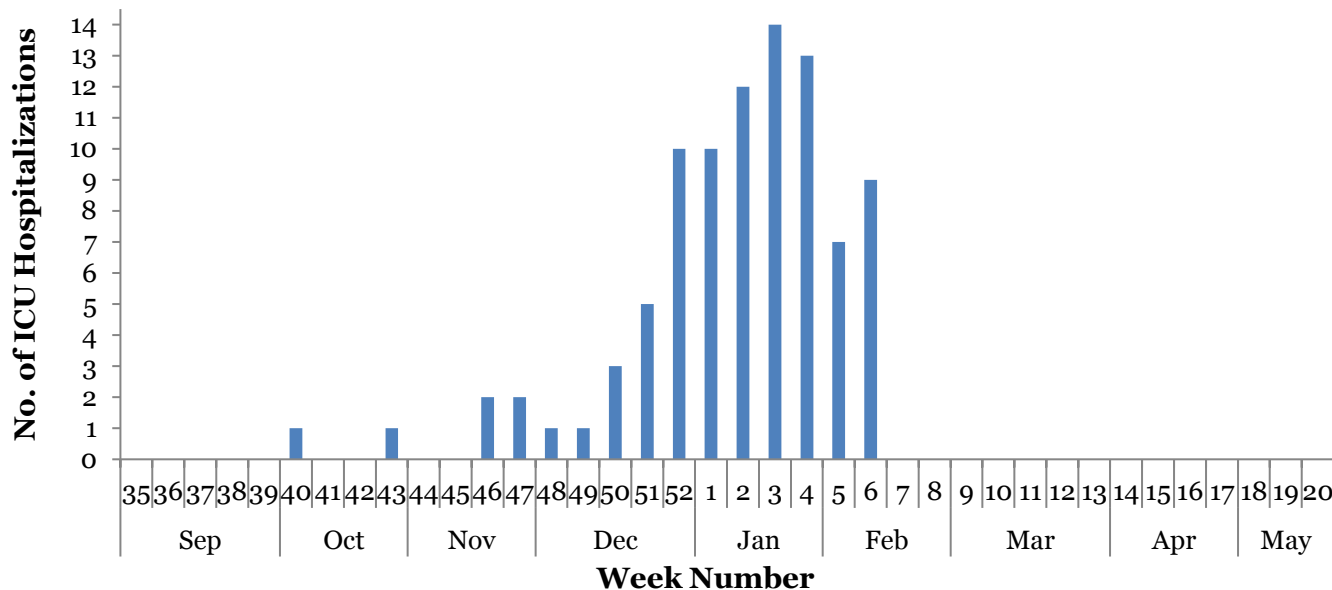
III. Circulating Strains³



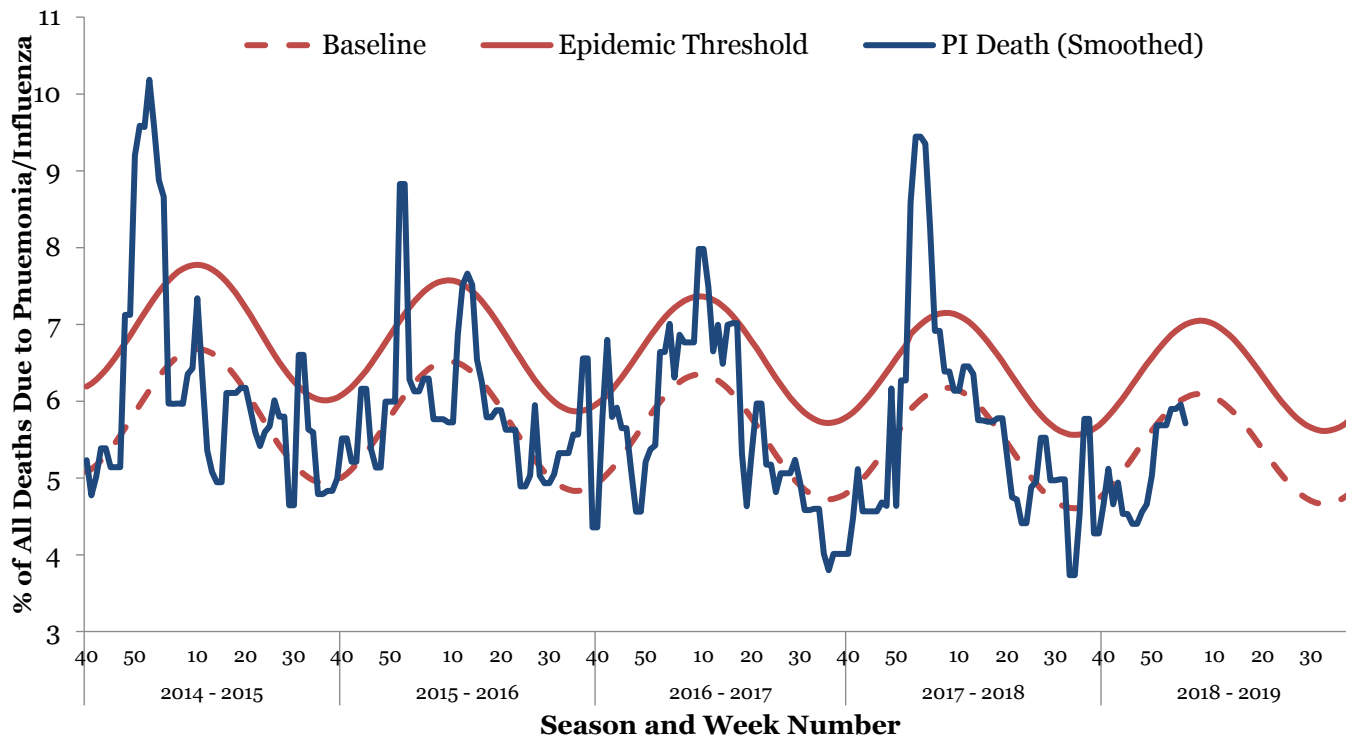
IV. Seasonal Severity

ICU Hospitalizations⁴

Cumulative Case Count	#	Incidence Rate	Per 100,000
Total Cases	91		4.01
Incidence Rate by Age		Incidence Rate by Region	
0-4	5.58	North	2.91
5-24	0.99	West	4.37
25-49	2.52	Southwest	6.05
50-64	5.08	South	4.24
65+	11.25		



Pneumonia and Influenza Mortality⁵



V. Regional Flu Activity¹

