



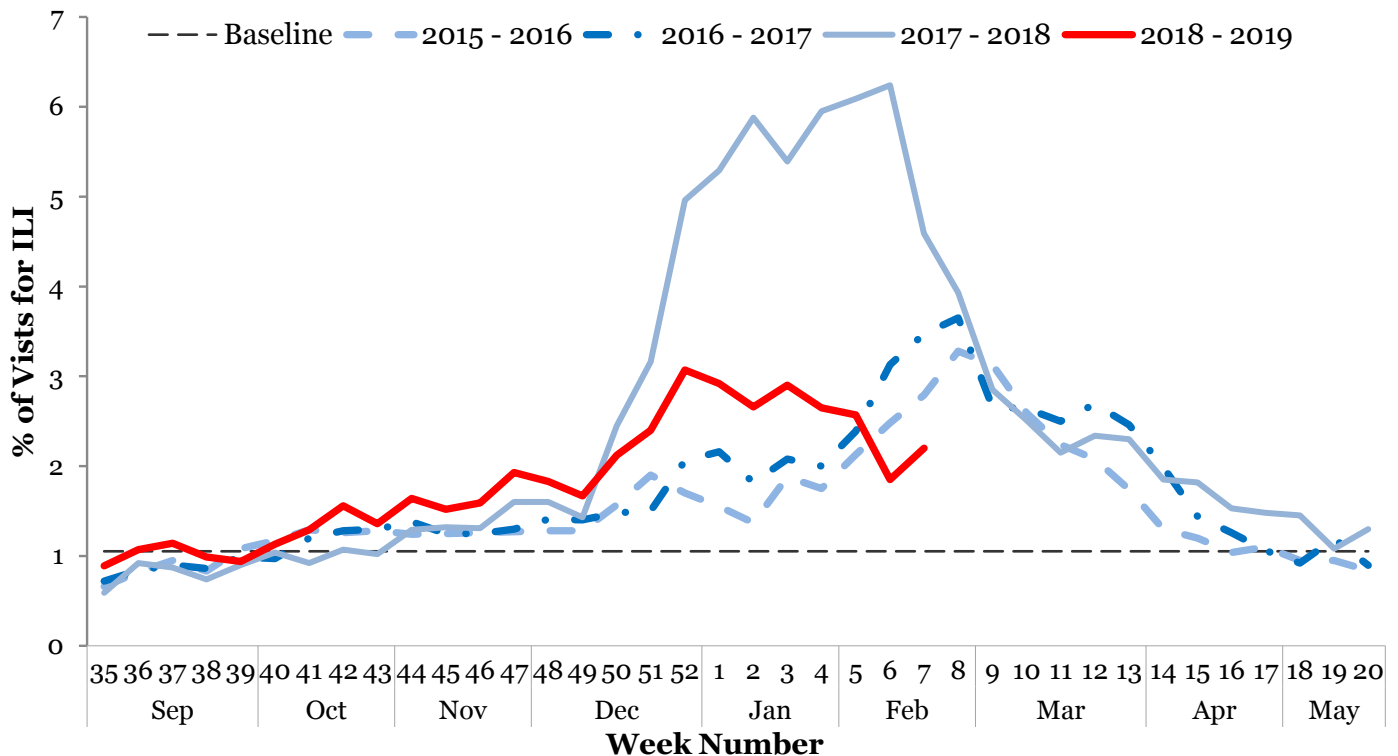
I. Influenza-like Illness (ILI) Weekly Summary

- Influenza activity is currently **high**. This risk assessment is based on:
 - The proportion of emergency department visits for ILI was 2.20%, above the regional baseline of 1.05%, and has been increasing for one week.
 - The proportion of outpatient provider visits for ILI was 1.54%, above the regional baseline of 0.73%, and has been increasing for one week.
 - The proportion of deaths associated with pneumonia or influenza was 4.30%, below the epidemic threshold of 7.02%.
- Seven hundred forty-five (21.87%) laboratory specimens tested positive for influenza: 77 influenza A H1N1, 9 influenza A H3N2, 640 influenza A unknown subtype, and 19 influenza B.
- Twelve influenza-associated intensive care unit (ICU) hospitalizations were reported during Week 7. One hundred and three ICU hospitalizations have been reported since Week 35.
- Since Week 35, 0 influenza-associated pediatric deaths, 1 cluster of ILI in a school, and 8 outbreaks of influenza in congregate care settings have been reported.
- **Current recommendations:** Promote vaccination, respiratory hygiene, and prompt treatment with antivirals. Facilities may wish to consider temporary visitor restrictions.

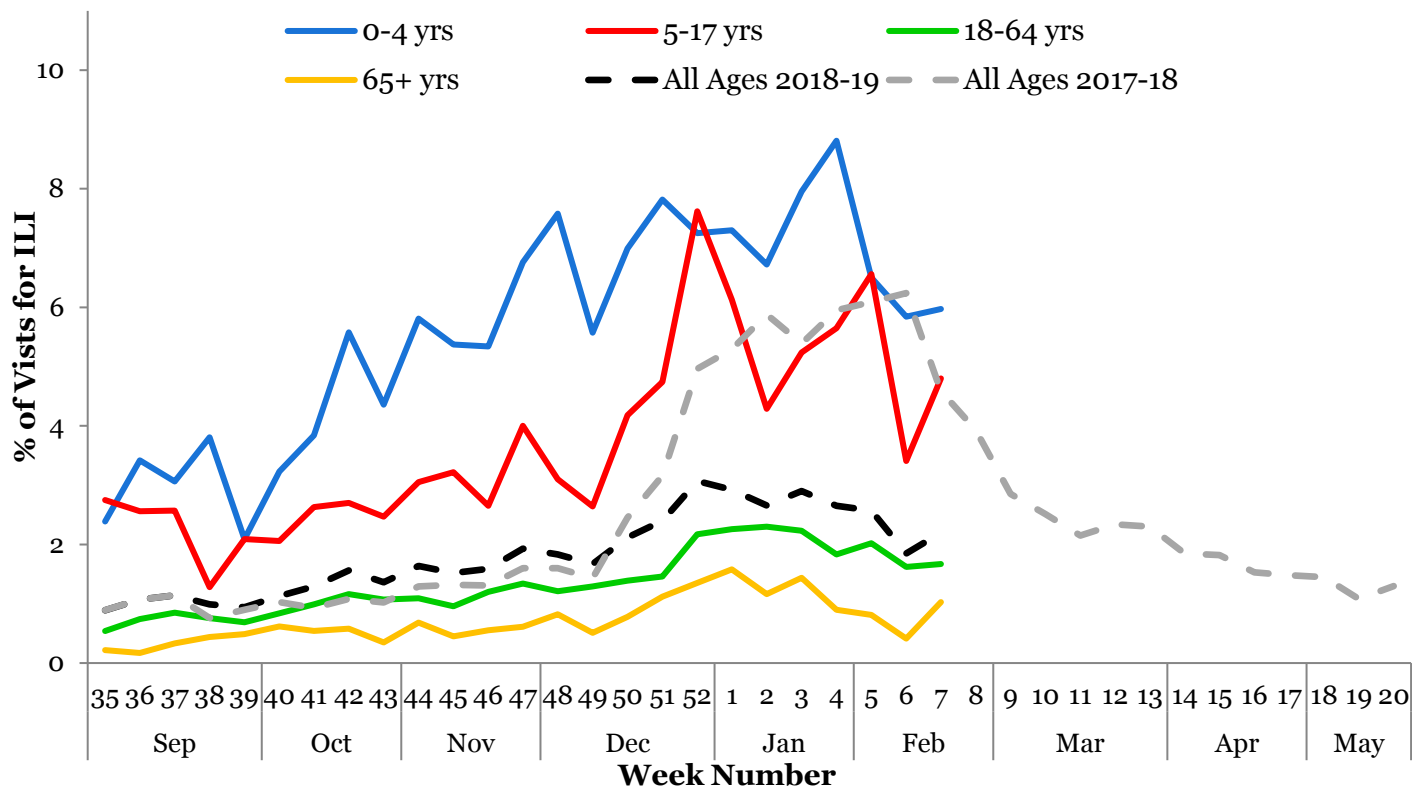
Note: Surveillance for ILI in suburban Cook County involves the weekly collection of data from hospitals, physicians' offices, and laboratories. Thank you to all of our surveillance partners for their help in collecting this information.

II. Influenza Activity Level / Disease Burden

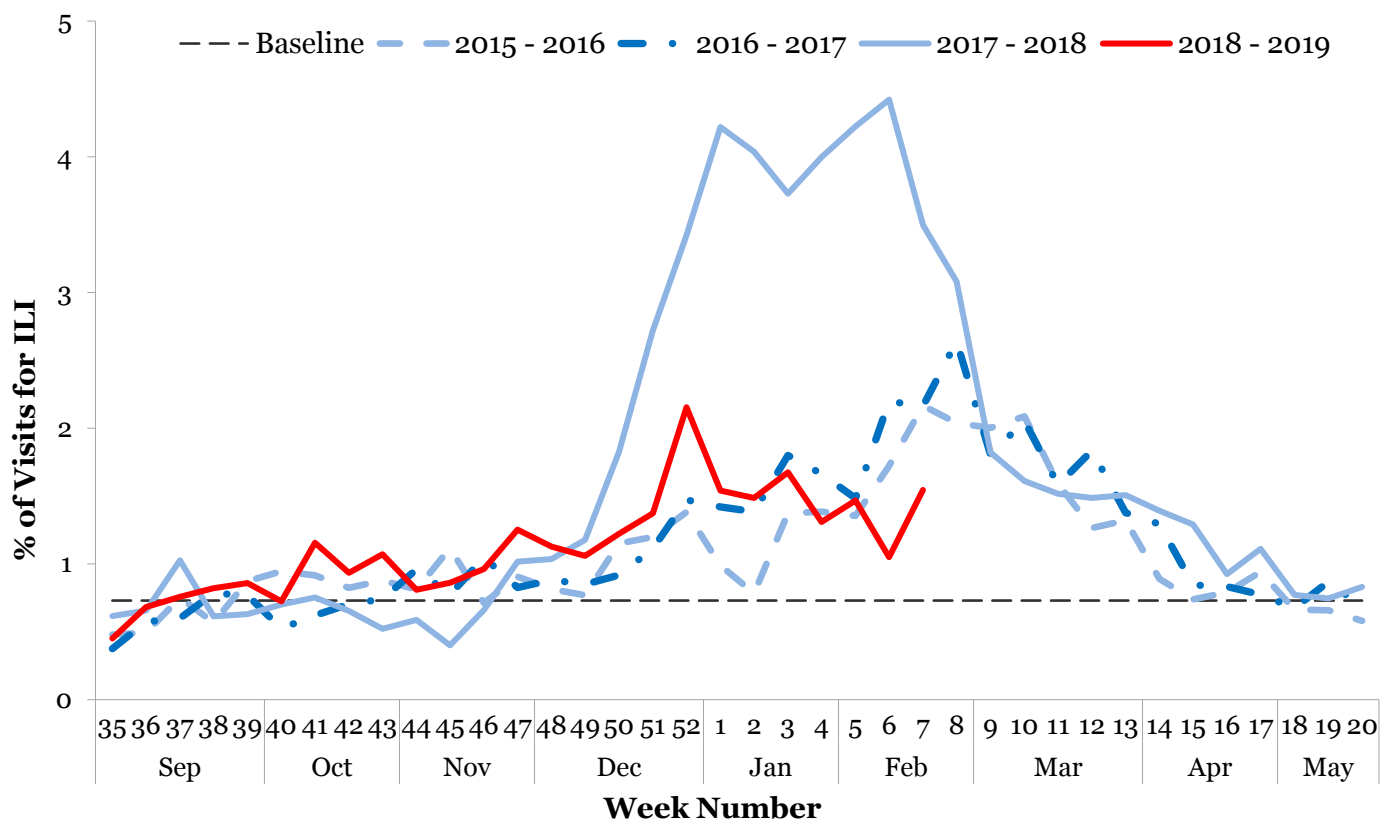
Emergency Department Syndromic Surveillance¹



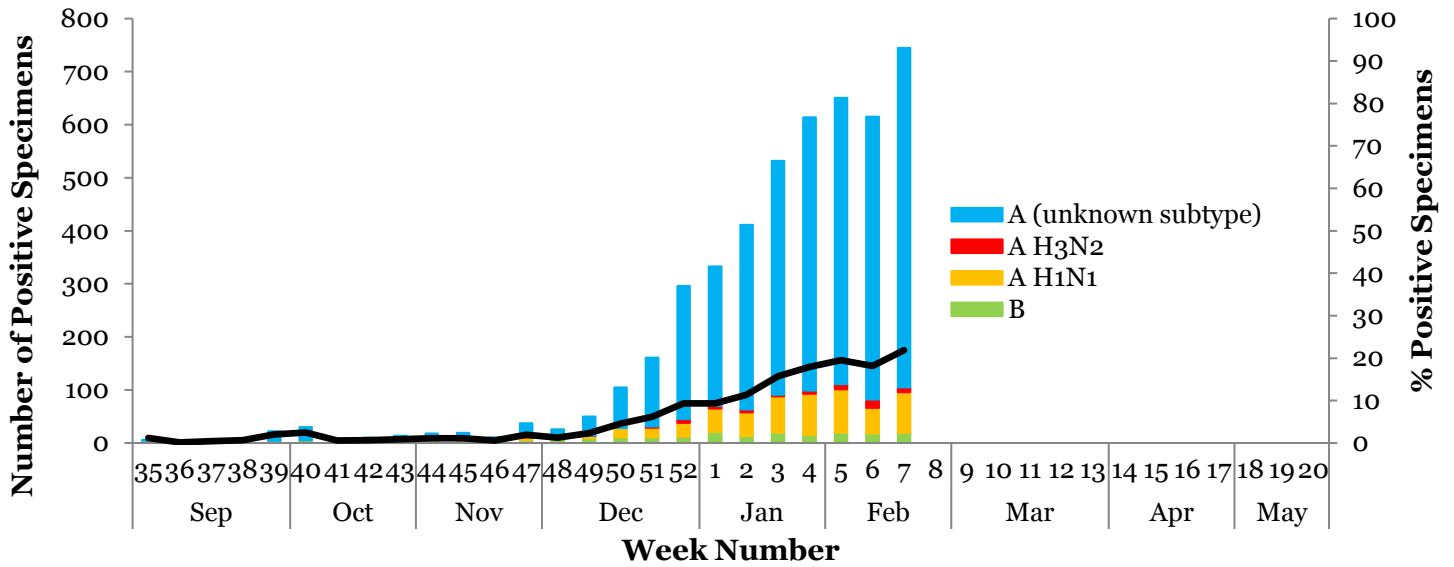
Syndromic Surveillance by Age Group¹



Outpatient Sentinel Providers²



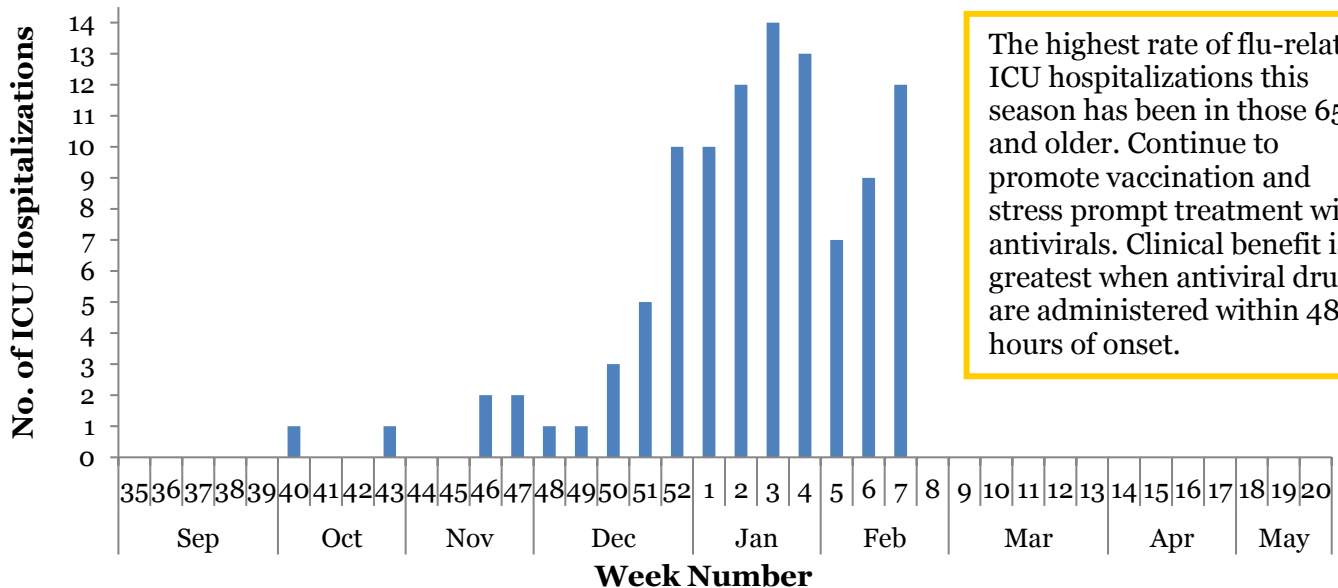
III. Circulating Strains³



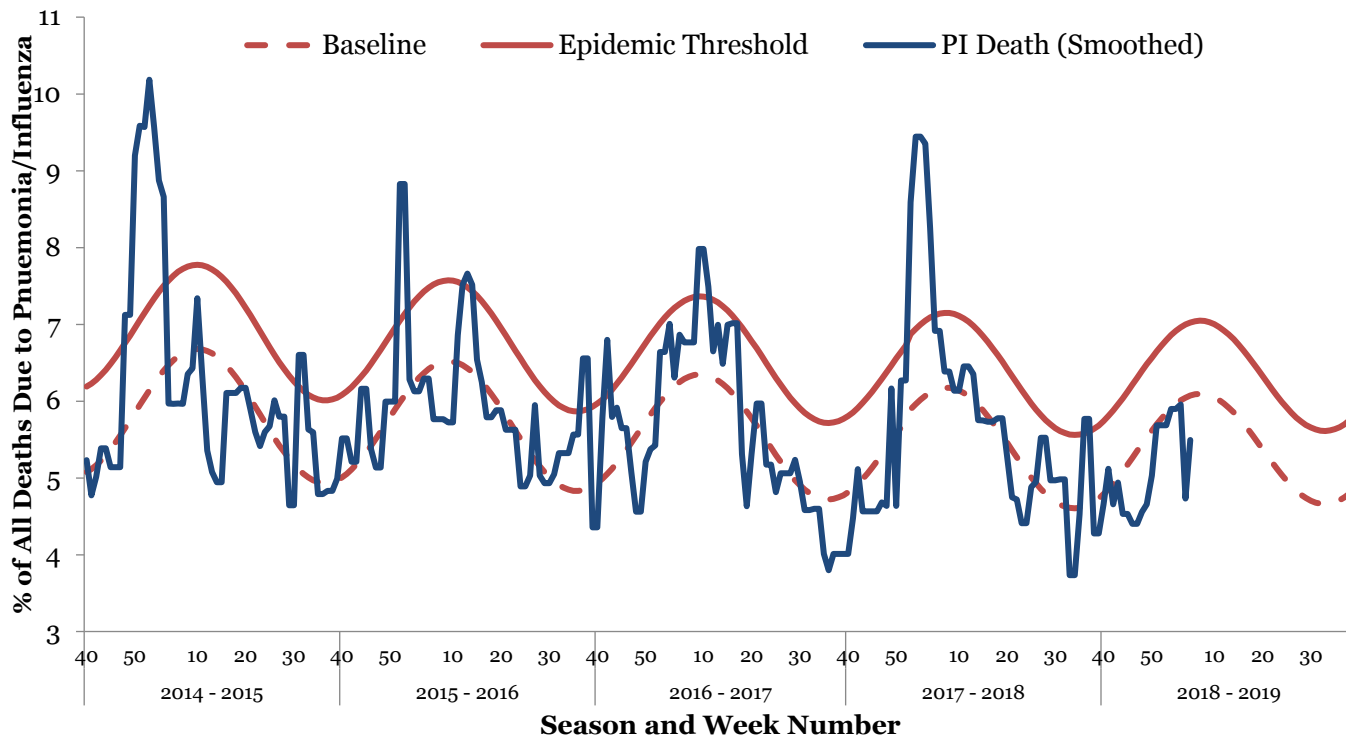
IV. Seasonal Severity

ICU Hospitalizations⁴

Cumulative Case Count	#	Incidence Rate	Per 100,000
Total Cases	103		4.54
Incidence Rate by Age		Incidence Rate by Region	
0-4	5.58	North	3.77
5-24	0.99	West	4.56
25-49	2.78	Southwest	6.32
50-64	5.97	South	4.66
65+	13.17		



Pneumonia and Influenza Mortality⁵



V. Regional Flu Activity¹

