

Forces of Change Assessment Review and Initial impressions

Thursday, October 29, 2015
Community Partner Meeting

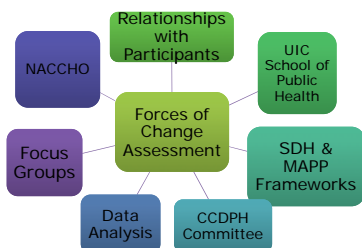


Overview

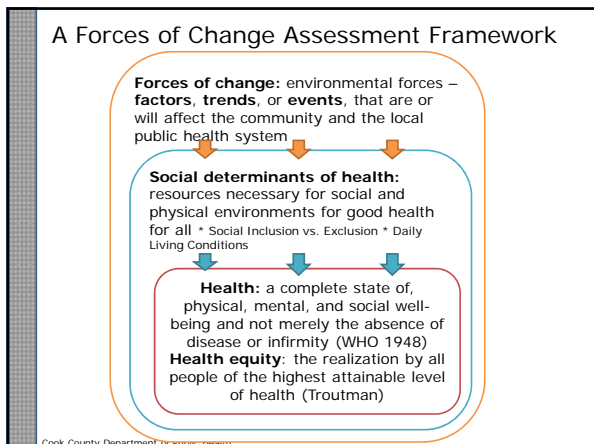
- Framework, implementation and findings summary (15 minutes)
- Small group discussion - 2 questions (15 minutes)
 - What stands out? Or speaks to you?
 - What is most relevant? Or important about this?
- Group report out (15 minutes)

Cook County Department of Public Health

Forces of Change Assessment Components



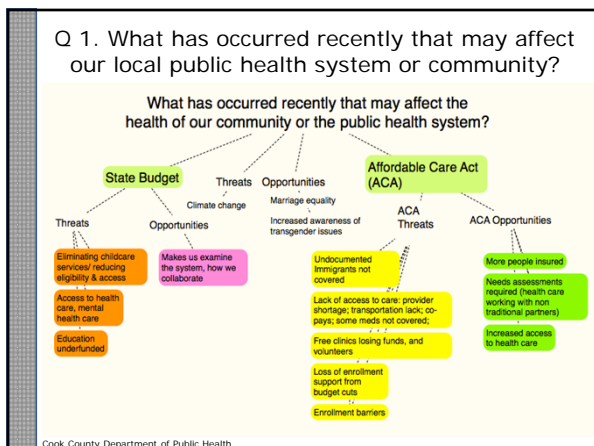
Cook County Department of Public Health



Forces of Change Questions

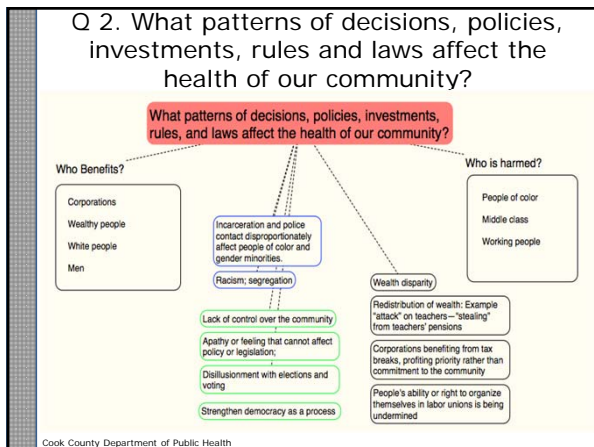
- What has occurred recently that may affect our local public health system or community?
- What patterns of decisions, policies, investments, rules, and laws affect the health of our community?
- Who or what institutions have the power to create, enforce, implement, and change these decisions, policies, investments, rules, and laws?

Cook County Department of Public Health



Occurrences	Threats	Opportunities
Affordable Care Act (ACA)	Lack of access (undocumented not covered ACA)	More people insured
	Provider shortage	More partnerships—ACA requires providers' needs assessment
	Barriers to care (transportation, copays, Rx)	Increased access to health care
Illinois State Budget	Less access to child care	Makes us examine the system
	Less access to health, mental health care, other services	Collaborate more
	Underfunding education	
Others	Climate change	Awareness of transgender issues
		Marriage equality

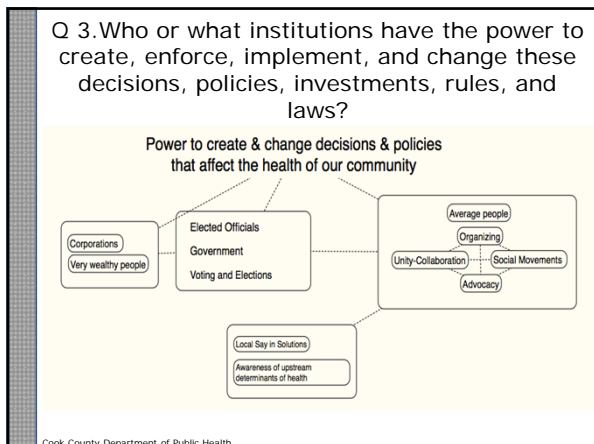
Cook County Department of Public Health



Cook County Department of Public Health

'Patterns'	Harmed	Benefit
Disproportionate incarceration, police contact	People of color	Large corporations
Racism, residential segregation	People who are middle class	People who are white
Lack of control over community	Working' people,	People who are very wealthy
Perceived inability to affect policy	People who are low-income	Men
Disillusionment with elections & voting	Women	
Need to strengthen democracy		
Wealth disparity		
Redistribution of wealth		
Lack of fairness in taxation		
Undermining right to organize in the workplace		

Cook County Department of Public Health



'Power to change...'	Related themes
Corporations	People unaware of health importance of 'upstream' non-health determinants
Very wealthy people	
Elected officials	Solutions should be proposed or rooted locally
Government	Elected officials more influenced by wealth and large corporations
Average people	Average people have less influence
	Voting & elections are important, but disillusionment exists
	Average people have power through: organizing, movements, advocacy, unity & collaboration

Cook County Department of Public Health

Discussion (Instructions)

- Take a few min to reflect on 2 questions.
 - Write on individual paper in packet
- Meet in small group 10-15 min.
 - Discuss key ideas / responses
- Using paper and markers
 - Note 'consensus' ideas/statements to report out to large group for each question
 - Spokesperson to share/place on wall

Cook County Department of Public Health
