



**COOK  
COUNTY  
DEPARTMENT  
OF  
PUBLIC  
HEALTH**



COOK COUNTY DEPARTMENT  
OF PUBLIC HEALTH

ESTABLISHED	- July, 1940
JURISDICTION	- Suburban Cook County in areas not served by full-time public health departments
POPULATION	- 1,842,463 (U.S. Bureau of the Census 1970)
INC. COMMUNITIES	- 117
SQUARE MILE AREA	- 725 (350 uninc.)
PERSONNEL	- 127
BUDGET (1971)	\$1,235,384 (Cook County) 416,563 (State-Federal) \$1,651,947 - Total

**DIRECTORY**

CENTRAL OFFICE

1425 South Racine Avenue  
Chicago, Illinois 60608  
Telephone: 243-5832

NORTH DISTRICT OFFICE

1401 Oakton Street  
Des Plaines, Illinois 60018  
Telephone: 827-5188

WEST DISTRICT OFFICE

1907-09 Rice Street  
Melrose Park, Illinois 60160  
Telephone: 344-6052

SOUTHWEST DISTRICT OFFICE

5410 West 95th Street  
Oak Lawn, Illinois 60453  
Telephone: 423-7500

SOUTH DISTRICT OFFICE

51 East 154th Street  
Harvey, Illinois 60426  
Telephone: 333-0006

# STAFF

*The professional staff is composed of specialists trained in personal and community health who devote full-time to their work. . .physicians, dentists, public health nurses, sanitary engineers, sanitarians, public health educators, nutritionists, physical therapists, vision and hearing technicians, and a mental health consultant.*

## HEALTH SERVICES & ACTIVITIES

### FAMILY HEALTH

- Provides consultation and assistance to the family in the care of premature and newborn infants, handicapped children (birth anomalies), and the mentally retarded.
- Provides services in the Maternal Clinic (Robbins) including examination, plan for delivery and care of the newborn infant, nutrition instruction, health teaching, and medical supervision throughout pregnancy.
- Provides health supervision for well children (under 5 years) whose parents are unable to pay for this care. Services at the well baby clinics include periodic evaluation of physical growth and development, immunizations, parent counseling including anticipatory guidance, and nutrition consultation.
- Provides the special dietary product used in the treatment of phenylketonuria (PKU), a preventable cause of mental retardation.
- Provides nursing care in the home to chronically and acutely ill patients, as well as the handicapped and the aged.
- Works with hospitals and private physicians to provide skilled nursing care and physical therapy in the home after the patient is discharged from the hospital.
- Operates family planning clinics.

### Family Health (Continued)

- Provides general nutrition information and home management suggestions to families.
- Provides consultation to the individual who requires a modified diet.

### SCHOOL HEALTH

- Works with school personnel to develop programs of health services, health instruction and healthful school environment.
- Conducts vision and hearing screening programs in elementary and nursery schools.
- Conducts diagnostic otologic clinics for early diagnosis of children failing in the hearing screening program for appropriate educational placement.
- Provides counseling service to pregnant teenagers.
- Works with families and students regarding specific health problems.
- Advises on content and suggests methods to teachers for the inclusion of health education and nutrition information in the curriculum.



# HEALTH SERVICES & ACTIVITIES

## DISEASE CONTROL

- Works to prevent and control communicable diseases.
- Operates immunization clinics for protection against communicable diseases for families unable to secure these services.
- Distributes biologics and drugs to physicians for diagnosis, prevention and/or treatment of communicable diseases.
- Provides consultation on communicable disease problems to physicians, school officials and others.
- Validates international travel certificates.
- Provides information regarding vaccinations required for international travel.
- Screens high risk groups for detection of lead poisoning and sickle cell disease.
- Assists hospitals in the establishment and maintenance of Poison Control Centers.
- Carries on venereal disease control services including confidential investigation of contacts.
- Provides free VD treatment for persons under 19 years of age, and anyone unable to pay for treatment.

## ENVIRONMENTAL HEALTH

### Inspections

- Swimming pools (private, public, indoor, outdoor)
- Water treatment plants
- Food handling establishments
- Hospitals
- Nursing homes
- Schools (on request)
- Solid waste disposal sites
- Sewage treatment plants

### Investigations

- Nuisance complaints
- FHA evaluations
- Stream pollution
- Water samples
- Private water sample analysis
- Insect and rodent control investigations

### License

- Tourist and trailer parks
- Migrant labor camps
- Food service establishments

### Approval of Construction Applications

- Septic tank and seepage system applications
- Subdivisions
- Swimming pools

## DENTAL HEALTH

- Promotes programs of education and prevention.
- Provides treatment services for children under 16 years whose parents cannot afford private dental care.

## CHRONIC ILLNESS

- Maintains a rheumatic fever registry of all known cases.
- Provides free drugs on the request of the physician for persons who have been diagnosed as having rheumatic fever.
- Conducts intensive tuberculosis casefinding programs.
- Supervises patients having tuberculosis.
- Provides nursing care in the home to chronically ill patients.
- Works with facilities serving the chronically ill and aged to improve nutrition in the patients.

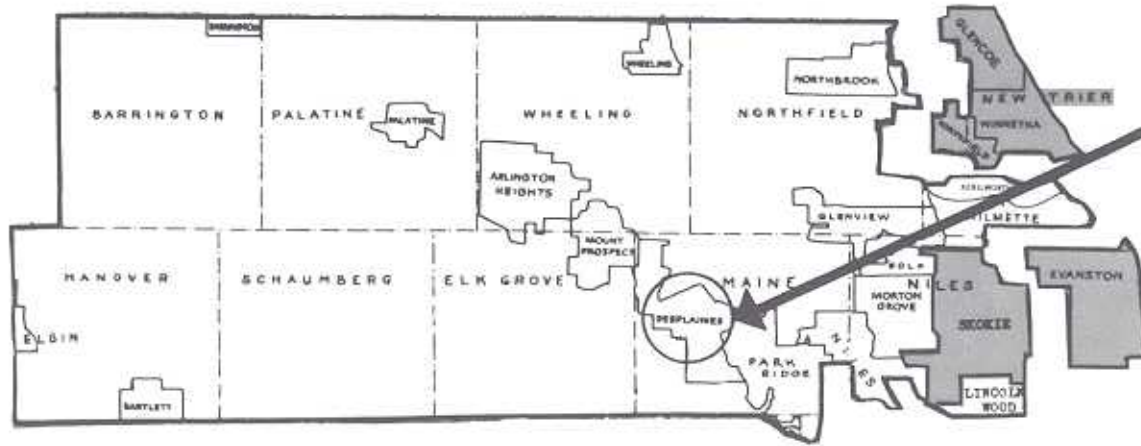
## VITAL STATISTICS

- Keeps accurate records of all vital statistics.
- Issues certified copies of birth and death certificates.
- Issues burial permits.

## HEALTH INFORMATION CENTER

- Provides health information services to meet community requests.
- Gives talks to groups on health subjects.
- Disseminates and interprets to the consumers of health selected and timely information on health problems, hazards, issues, and conditions.

# NORTH DISTRICT



**NORTH DISTRICT**  
 1401 Oakton Street  
 Des Plaines, Illinois 60018  
 Telephone 827-5188

**POPULATION 629,410**  
**INC. COMMUNITIES 29**

### CCDPH PERSONNEL IN NORTH DISTRICT

- 1 Supervising nurse
- 1 Assistant supervising nurse
- 9 Public health nurses
- 6 Registered nurses
- 1 Public health educator
- 1 Sanitary engineer (North/West)
- 1 Sanitarian
- 2 Environmental health inspectors
- 1 Institutional nutrition consultant (county-wide)
- 2 Vision/hearing technicians
- 1 Physical therapist (part-time)
- 2 Secretaries

### CLINICS OPERATED BY CCDPH

- 4 Well baby clinics
- 2 Immunization clinics
- 1 Family planning clinic
- Diagnostic otologic clinics (at scheduled intervals)

### ENVIRONMENTAL HEALTH FACILITIES (monitored by CCDPH)

- 40 Public water supplies
- 228 Swimming pools
  - 183 Outdoor
  - 45 Indoor
- 16 Restaurants (uninc. areas)
- 17 Trailer parks
- 21 Motels

### OTHER HEALTH PERSONNEL -

- Not on CCDPH staff  
 (funded by school districts/communities)
- 108 Nurses (school districts)
  - 8 Nurses (school/community)
  - 1 Health educator (part-time/community)
  - 20 Sanitarians (5 part-time/community)
  - 3 Environmental health inspectors (1 part-time/community)

### OTHER COMMUNITY HEALTH FACILITIES

- 34 Nursing homes and homes for the aged
- 3 Children's homes
- 4 General hospitals
- 1 Private mental hospital
- 1 Tuberculosis clinic
- 4 Mental health centers

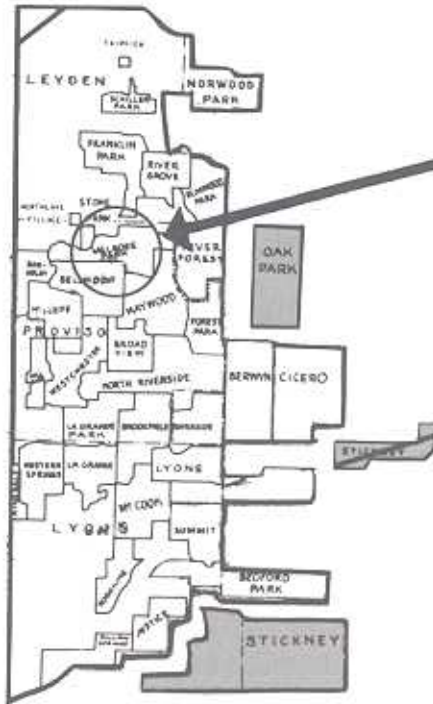
### SCHOOLS

- 233 Elementary schools
  - 188 Public
  - 45 Parochial
- 134,549 Enrollment

### NURSING SERVICE PROVIDED BY CCDPH TO:

- 30 Elementary schools
- 30 Parochial
- 16,634 Enrollment

# WEST DISTRICT



**WEST DISTRICT**  
 1907 Rice Street  
 Melrose Park, Illinois 60160  
 Telephone 344-6052

POPULATION 555,836  
 INC. COMMUNITIES 40

## CLINICS OPERATED BY CCDPH

- 2 Well baby clinics
- 1 Immunization clinic
- 3 Dental clinics
- Diagnostic otologic clinics (at scheduled intervals)

## OTHER COMMUNITY HEALTH FACILITIES

- 19 Nursing homes and homes for the aged
- 4 Children's homes
- 6 General hospitals
- 1 Private mental hospital
- 1 Tuberculosis hospital
- 1 Tuberculosis clinic
- 3 Mental Health centers
- 1 Family planning clinic
- 7 Well baby clinics
- 2 Immunization clinics
- 1 Health Center (Maywood-Proviso)

## ENVIRONMENTAL HEALTH FACILITIES (monitored by CCDPH)

- 42 Public water supplies
- 128 Swimming pools
  - 99 Outdoor
  - 29 Indoor
- 248 Restaurants (uninc. areas)
- 17 Trailer parks
- 8 Motels
- Migrant camps (number varies)

## SCHOOLS

- 199 Elementary schools
  - 140 Public
  - 59 Parochial
- 85,994 Enrollment

## CCDPH PERSONNEL IN WEST DISTRICT

- 1 Supervising nurse
- 1 Assistant supervising nurse
- 5 Public-health nurses
- 2 Registered nurses
- 1 Sanitary engineer (West/North)
- 1 Sanitarian
- 1 Nutrition consultant (West/North/Southwest)
- 2 Vision/hearing technicians
- 2 Secretaries

## OTHER HEALTH PERSONNEL - Not on CCDPH staff (funded by school districts/communities)

- 72 Nurses (school districts)
- 19 Nurses (school/community)
- 18 Nurses (community)
- 17 Sanitarians (3 part-time/community)
- 8 Environmental health inspectors (1 part-time/community)

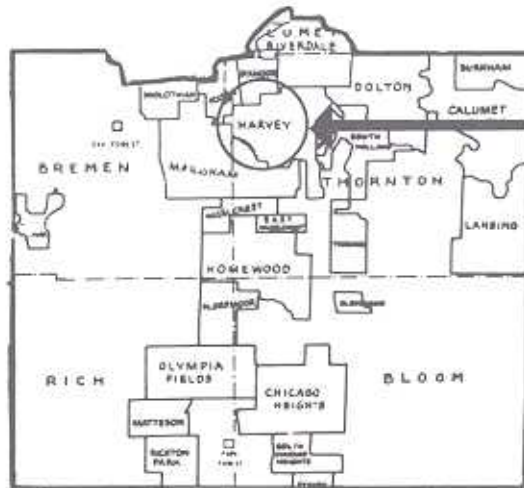
## NURSING SERVICE PROVIDED BY CCDPH TO:

- 32 Elementary schools
  - 1 Public
  - 31 Parochial
- 13,887 Enrollment





# SOUTH DISTRICT



**SOUTH DISTRICT**  
 51 East 154th Street  
 Harvey, Illinois 60426  
 Telephone 333-0006

POPULATION 421,327  
 INC. COMMUNITIES 31

## CCDPH PERSONNEL - IN SOUTH DISTRICT

- 1 Supervising nurse
- 1 Assistant supervising nurse
- 8 Public health nurses
- 3 Registered nurses
- 1 Sanitary engineer (South/Southwest)
- 1 Sanitarian
- 3 Environmental health inspectors
- 1 Vision/hearing technician
- 1 Physical therapist (South/Southwest)
- 1 Community health aide
- 2 Secretaries

## CLINICS OPERATED BY CCDPH

- 12 Well baby clinics
- 3 Immunization clinics
- 5 Dental clinics
- Diagnostic otologic clinics  
 (at scheduled intervals)

## OTHER COMMUNITY HEALTH FACILITIES

- 19 Nursing homes and homes for the aged
- 1 Children's home
- 3 General hospitals
- 1 Chronic disease hospital
- 1 Mental Hospital
- 1 Tuberculosis clinic
- 2 Mental health centers
- 2 Family planning clinics

## ENVIRONMENTAL HEALTH FACILITIES (monitored by CCDPH)

- 30 Public water supplies
- 59 Swimming pools
  - 46 Outdoor
  - 13 Indoor
- 16 Restaurants (uninc. areas)
- 13 Trailer parks
- 11 Motels

## SCHOOLS

- 199 Elementary schools
  - 156 Public
  - 43 Parochial
- 90,768 Enrollment

## OTHER HEALTH PERSONNEL - Not on CCDPH staff (funded by school districts/communities)

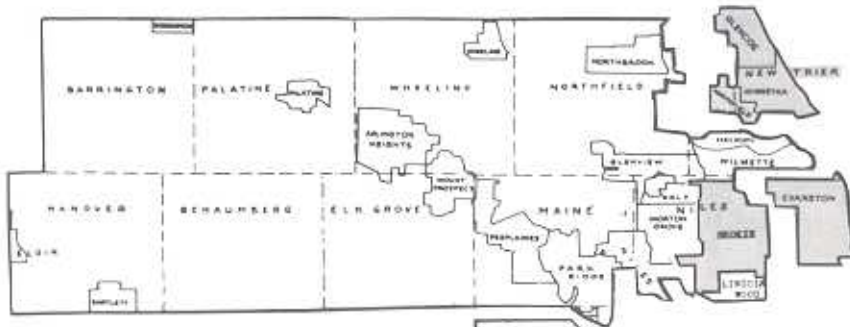
- 73 Nurses (school districts)
- 9 Nurses (school/community)
- 1 Sanitarian (community)
- 7 Head Start workers and others

## NURSING SERVICE PROVIDED BY CCDPH TO:

- 21 Elementary schools
  - 6 Public
  - 15 Parochial
- 9,134 Enrollment

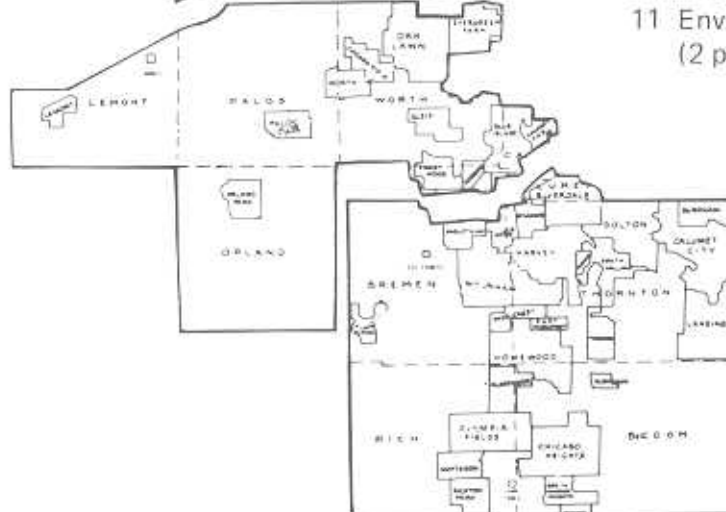
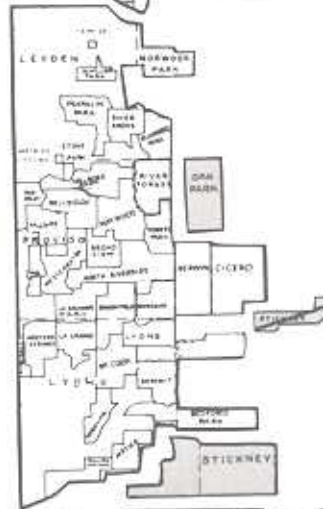
# COOK COUNTY DEPARTMENT OF PUBLIC HEALTH

*(Jurisdiction in Suburban Cook County except where there are full-time health departments - Evanston-North Shore, Skokie, Oak Park, and Stickney Township.)*



**CENTRAL OFFICE**  
 1425 South Racine Avenue  
 Chicago, Illinois 60608  
 Telephone 243-5832

POPULATION 1,842,463  
 INC. COMMUNITIES 117



## CLINICS OPERATED BY CCDPH

- 24 Well baby clinics
- 9 Immunization clinics
- 13 Dental clinics
- 1 Family planning clinic
- 1 Maternal clinic (Robbins)
- Diagnostic otologic clinics (at scheduled intervals)

## OTHER HEALTH PERSONNEL

Not on CCDPH staff  
 (funded by school districts/  
 communities/others)

- 283 Nurses (school districts)
- 36 Nurses (school/community)
- 18 Nurses (community)
- 1 Health educator (part-time)
- 25 Sanitarians (9 part-time/community)
- 7 Head Start workers and others
- 1 VD investigator (federally funded)
- 11 Environmental Health Inspectors (2 part-time/community)

## ENVIRONMENTAL HEALTH FACILITIES (monitored by CCDPH)

- 132 Public water supplies
- 447 Swimming pools
- 350 Outdoor
- 97 Indoor
- 323 Restaurants (uninc. areas)
- 76 Trailer parks
- 45 Motels

## OTHER COMMUNITY HEALTH FACILITIES

- 90 Nursing homes and homes for the aged
- 8 Children's homes
- 18 General hospitals
- 3 Private mental hospitals
- 1 Tuberculosis hospital
- 4 Tuberculosis clinics
- 11 Mental health centers
- 4 Family planning clinics
- 7 Well baby clinics
- 2 Immunization clinics
- 2 Residential care institutions
- 1 Sheltered care home
- 1 Health center

## SCHOOLS

- 730 Elementary schools
- 553 Public
- 177 Parochial
- 359,212 Enrollment

## NURSING SERVICE PROVIDED BY CCDPH TO:

- 115 Elementary schools
- 13 Public
- 102 Parochial
- 57,775 Enrollment



# PERSONNEL

## ADMINISTRATION

Director..... John B. Hall, M.D., M.P.H.  
Business Manager..... Joseph E. Duffy  
Administrative Assistant..... Jessie Pierson

## PREVENTIVE MEDICINE AND EPIDEMIOLOGY

Chief..... Colette Rasmussen, M.D., M.P.H.  
Disease Control Investigator..... James Mulrooney

## MATERNAL AND CHILD HEALTH

Chief..... Nen Koh, M.D., M.P.H.

## DENTAL HEALTH

Chief..... Seymour Gould, D.D.S.  
Dentist..... W. C. Lukaszewski, D.D.S.  
Dentist..... Edward Spanski, D.D.S.

## PUBLIC HEALTH NURSING

Chief..... Elaine Nemoto, R.N., M.A.

### Assistant Chief:

Maria Coburn, R.N., M.A.

### Supervisors:

Rita Bakewell, R.N., M.S.  
Bridget Campbell, R.N., M.Ed.  
Edith Nyden, R.N., B.S.P.H.N.  
Mary Stypul, R.N., B.S.P.H.N.

### Assistant Supervisors:

Marian Alich, R.N., M.S.  
Patricia Drott, R.N., B.S.N., (Acting)\*\*  
Eleanor Fitzgerald, R.N., M.Ed.  
Dorothy Wickliffe, R.N., B.S.P.H.N.  
Alma McDavid, R.N., B.S.N., (Acting)

### Consultant:

Jonna Smith, R.N., M.S. (Mental Health)  
Faye Krauss, R.N., M.A. (PHN Coordinator)

### Physical Therapist:

Mortimer Lewis, M.A., R.P.T., (part-time)\*  
Alice Okrafosmart, R.N., R.P.T.  
Kenji Okamoto, R.P.T. (part-time)

### Vision-Hearing Technicians

Omelia Freyer  
Evelyn Kaplan  
Dorothy Mangan\*  
Mary McGee, L.P.N.  
Catherine Panozzo, R.N.\*  
Dorothy Rogers, L.P.N.  
Mary Smith  
Anna Steele  
Kathleen Vassolo, L.P.N.

### Community Health Aide:

Joan Rice

### Staff Nurses:

Lydia Armas, R.N., B.S.N.  
Leah Aubert, R.N., B.S.N.  
Mary Barton, R.N.  
Janet Bowen, R.N., B.S.N.  
Dorrence Carter, R.N.  
Mary Cieplak, R.N.  
Barbara Coyle, R.N., B.S.N.  
Bette Daily, R.N.  
Mary Dawson, R.N.\*  
Joan Devens, R.N.  
Frances DeVries, R.N., B.S.N.\*  
Bonnie Doane, R.N., B.S.N.  
Lissy Dolezol, R.N., B.S.N.  
Annelle Durrenberger, R.N.  
Sylvia Eitmant, R.N.  
Ruth Elberfeld, R.N.  
Dale Flotkoetter, R.N., B.S.N.  
Barbara Freeman, R.N., B.S.N.  
Dolores Gaare, R.N.  
Mary Gibbons, R.N., B.S.N.  
Mary Grogan, R.N., B.S.N.\*  
Kathleen Henningsen, R.N., B.S.N.  
Sadie Hoekstra, R.N.  
Cheryl Hoffer, R.N., B.S.N.  
Eleanor Jeppson, R.N., B.S.N.  
Marian Johanson, R.N.  
Ruth Johnson, R.N., B.S.N.  
Esther Kulp, R.N., B.S.N.  
Rosemarie Kurek, R.N., B.S.N.  
Marilyn Malone, R.N., B.S.N.  
Lorraine McCambridge, R.N.  
Mary McElligott, R.N.  
Maureen McMahon, R.N., B.S.N.  
Helen McNamara, R.N.  
Louise Metcalfe, R.N.  
Doris Lundgren Nelson, R.N., B.S.N.  
Carol Olmon, R.N., B.S.N.\*  
Jill Pruyn, R.N., B.S.N.\*\*  
Eleanore Rasch, R.N.  
Rita Ruklic, R.N., B.S.N.  
Helen Sarsfield, R.N., B.S.N.  
Mary Schultz, R.N., B.S.N.\*  
Theresa Seermon, R.N.  
Kathleen Sharkey, R.N., B.S.N.\*  
Lolita Spruit, R.N., B.S.N.  
Carol Sullivan, R.N., B.S.N.  
Margaret Swain, R.N., B.S.P.H.N.  
Isobel Thompson, R.N.

\*Resigned

\*\*Leave of Absence

## EDUCATION AND INFORMATION

Chief..... Irene A. Fahey, M.P.H.  
Health Education  
Consultant..... Addie C. Reninger, M.P.H.

## NUTRITION

Chief..... Myrtle Meritt, M.S.  
Institutional Nutrition  
Consultant..... Zetta E. Thomas, B.S.  
Staff Nutritionist..... Elisa M. Ramilla, M.A.

## SANITARY ENGINEERING

Chief..... Robert R. de Jonge, B.S., R.P.E.  
Assistant Chief..... Steven W. Nich, B.S., R.P.E.

### Program Supervisors

Robert J. Wollschlager, M.S., R.P.E.  
LeRoy V. Dzierzanowski, B.S., R.S.

### District Engineers

Abraham Brantzky, B.S., R.P.E.  
John F. Schultzt, R.S.

### Registered Sanitarians

Carl Blondi, R.S.  
Stanley J. Gizewski, R.S.  
Dominick Lupo, R.S.  
John Marusarz, R.S.  
Stephen Shemanski, R.S.

### Environmental Health Inspectors

Sullivan Brown  
Charles D. Cuda, B.A.  
Albert Jackson\*  
George Kristovic\*  
Steven Lalich  
Paul Nicopoulos  
Donald Failsback  
Paul Roitman  
Warren Russell  
John C. Stevo

## SECRETARIAL STAFF

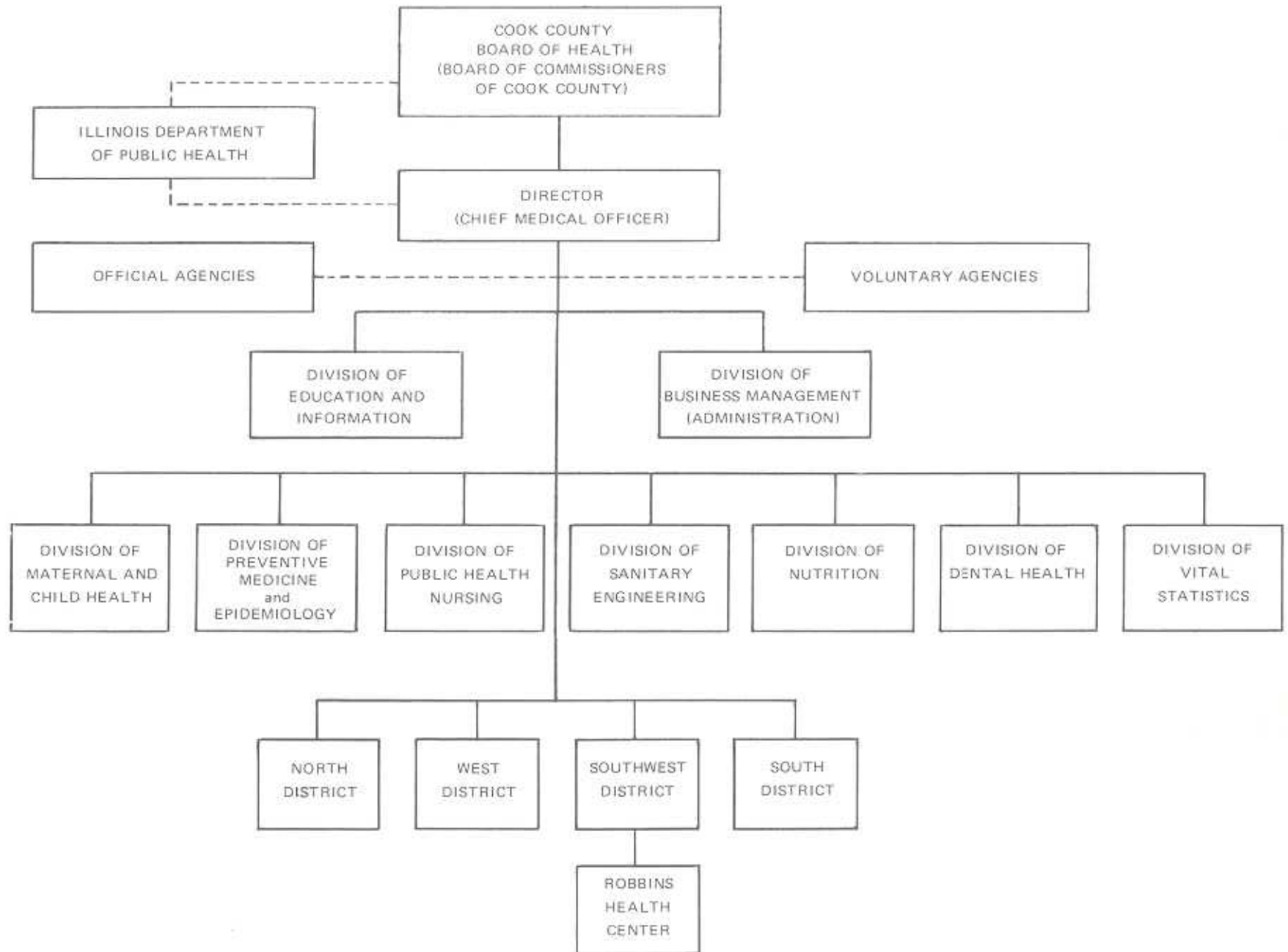
Chief..... Lorraine Johnson  
Mary Blanchard  
Jennie Di Pofi  
Donna Fiore  
Mary Gatlin  
Ann Mary Graber  
Joan Hall  
Helen Justice  
Zelma Johnson  
Rose Keenan  
Joanne Kennebeck  
Evelyn Kersten  
Lillie Kilo  
Fredrika Kirkling  
Violet Kohut  
Marie Summerville  
Wildlean Lewis  
Ruth Lloyd  
Thelma Lloyd  
Lillian Maxa  
Theresa Mustari  
Barbara Neuberger  
Evelyn Neumann  
Celia Riffkind  
Christine Roberts  
Diane Rosone  
Geraldine Sepel  
Julia Sullivan  
Dorothy Wilkins  
Patricia Walker.\*

## CUSTODIAL WORKER

Nathaniel Jones

# COOK COUNTY DEPARTMENT OF PUBLIC HEALTH

## OPERATIONAL CHART





# STATISTICS

## 1971

### PEOPLE

<b>POPULATION</b> .....	1,842,463*
Live Births:	
Total .....	29,349
Hospital births .....	29,259
Non-hospital births .....	90
Premature births .....	1,970
Deaths:	
All ages .....	13,008
Total infants .....	476
Under 1 year .....	96
Under 28 days .....	380

\*CCDPH jurisdiction

U.S. Bureau of the Census—1970

### VITAL RECORDS FILED

<b>Total</b> .....	21,759
Live Births .....	14,434
Fetal Deaths .....	142
Deaths .....	7,183

### DENTAL HEALTH CLINICS

Number of sessions held .....	648
Number of locations .....	14
Children registered .....	2,399
Visits to clinics .....	7,369

### SELECTED NOTIFIABLE DISEASES

(Figures include only cases reported to CCDPH)

Diphtheria .....	0
Encephalitis, acute infectious .....	23
Hepatitis, infectious .....	227
Measles .....	187
Meningitis (all types) .....	67
Poliomyelitis .....	0
Rubella (German measles) .....	34
Streptococcal sore throat and scarlet fever .....	2,110
Typhoid fever .....	2
Veneral diseases .....	1,171
Syphilis .....	370
Gonorrhea .....	801
Animal bites reported .....	8,969
Positive for rabies .....	0

### IMMUNIZATIONS

<b>Total</b> .....	11,175
Administered in:	
Child health conferences .....	6,630
District office clinics .....	4,545

### NURSING SERVICES

Persons admitted to service (new) .....	1,389
Persons visited .....	4,672
Visits to individuals .....	21,264
Families admitted to service (new) .....	936
Families served .....	2,249
Individuals in families served .....	3,319
Visits to families .....	17,917
Home care patients served .....	574
Home care visits .....	9,246

(Above include tuberculosis, school follow-up and home care visits)

### SCHOOL HEALTH SERVICES (1970-71)

Total number of schools .....	688
Service given to:	
Public .....	21
Enrollment .....	5,844
Parochial .....	101
Enrollment .....	51,931
Hearing Conservation Program:	
Screening .....	24,229
Re-Screening .....	3,226
Referrals .....	328
Otologic clinics (13) .....	282
Pre-School screening .....	240
Pre-school re-screening .....	155
Pre-school referrals .....	2
Vision Conservation Program:	
Screening .....	22,654
Re-screening .....	3,786
Referrals .....	2,280
Pre-school screening .....	248
Pre-school re-screening .....	155
Pre-school referrals .....	2
Visits through School Health program:	
Visits to school age children .....	371
Other individuals given service .....	51

### ACCIDENTAL POISONING

(Children 12 years of age and under)

Poison control centers located in hospitals .....	8
Accidental poisoning cases reported .....	1,372

### WELL BABY CLINICS

Number of sessions held .....	302
Number of locations .....	12
Children registered .....	1,187
Under 1 year .....	809
1 to 4 years .....	378
Visits .....	5,951
Under 1 year .....	2,837
1 to 4 years .....	3,064

### TUBERCULOSIS

Active cases under investigation .....	214
Visits to diagnosed cases and contacts .....	2,288

### NURSING HOMES

Services to Nursing Homes, Homes for the Aged, Homes for Children, and Sheltered Care Homes by Nutritionists and Sanitarians:	
Total number of homes .....	90
Survey visits .....	200
Other visits .....	497
Conferences .....	161
Certification visits .....	50

### MATERNAL CLINICS

Sessions per year .....	48
Pregnant women registered .....	180
Visits to Clinic .....	672

### RHEUMATIC FEVER REGISTRY

Total cases in registry .....	2,245
Inactive .....	819
Active .....	1,426
New cases registered .....	171
Cases reported not receiving medication .....	28

### SANITARY ENGINEERING SERVICES

Swimming Pools inspected .....	504
Private .....	36
Indoor .....	98
Outdoor .....	370
Private plans approved .....	36
Public plans approved .....	5
Swimming Pool analyses reported .....	3,753
Septic Tank and Seepage System Applications:	
Processed .....	285
Approvals .....	239
Tourist and Trailer Parks:	
Licensed and inspected .....	120
Motels inspected .....	33
Nuisance complaints:	
Received .....	305
Investigations .....	915
FHA evaluations .....	147
Migrant Labor Camps:	
Inspected and licensed .....	5
Visited .....	25
Lake and Stream Pollution Investigations .....	275
Public Water Treatment Plant Inspections:	
Inspection surveys .....	64
Visits to water supplies .....	218
Samples reported .....	6,300
Subdivisions:	
Approvals .....	3
Food Service Establishments:	
Inspected .....	595
Licensed .....	220
Solid waste disposal sites inspected .....	78
Private water analyses reported .....	2,800
Rodent control investigations .....	156
Hospital visits .....	54
Sewage Treatment Plant Inspections .....	160
Long Term Care Facilities .....	198
Long Term Care Facilities (licensure and consultation) .....	123
Child Welfare Institution Visits .....	7

### TEN LEADING CAUSES OF DEATH

1. Heart Disease .....	5,847
2. Cancer .....	2,789
3. Vascular lesions of central nervous system .....	1,331
4. All accidents .....	485
Motor vehicle .....	252
Other accidents .....	233
5. Congenital malformations and diseases of early infancy .....	452
6. Pneumonia .....	324
7. Other Circulatory .....	271
8. Cirrhosis of liver .....	245
9. Diabetes .....	214
10. General arteriosclerosis .....	208



**COOK COUNTY  
BOARD  
OF  
COMMISSIONERS**

---

**BOARD  
OF  
HEALTH**



George W. Dunne, *President*

Mathew W. Bieszczat

Charles S. Bonk

Charles F. Chaplin

Frank W. Chesrow

William N. Erickson

Floyd T. Fulle

Charles J. Grupp, Jr.

William H. Harvey

Jerome Huppert

Lillian Piotrowski

Ruby Ryan

John H. Stroger, Jr.

John P. Touhy

Joseph I. Woods