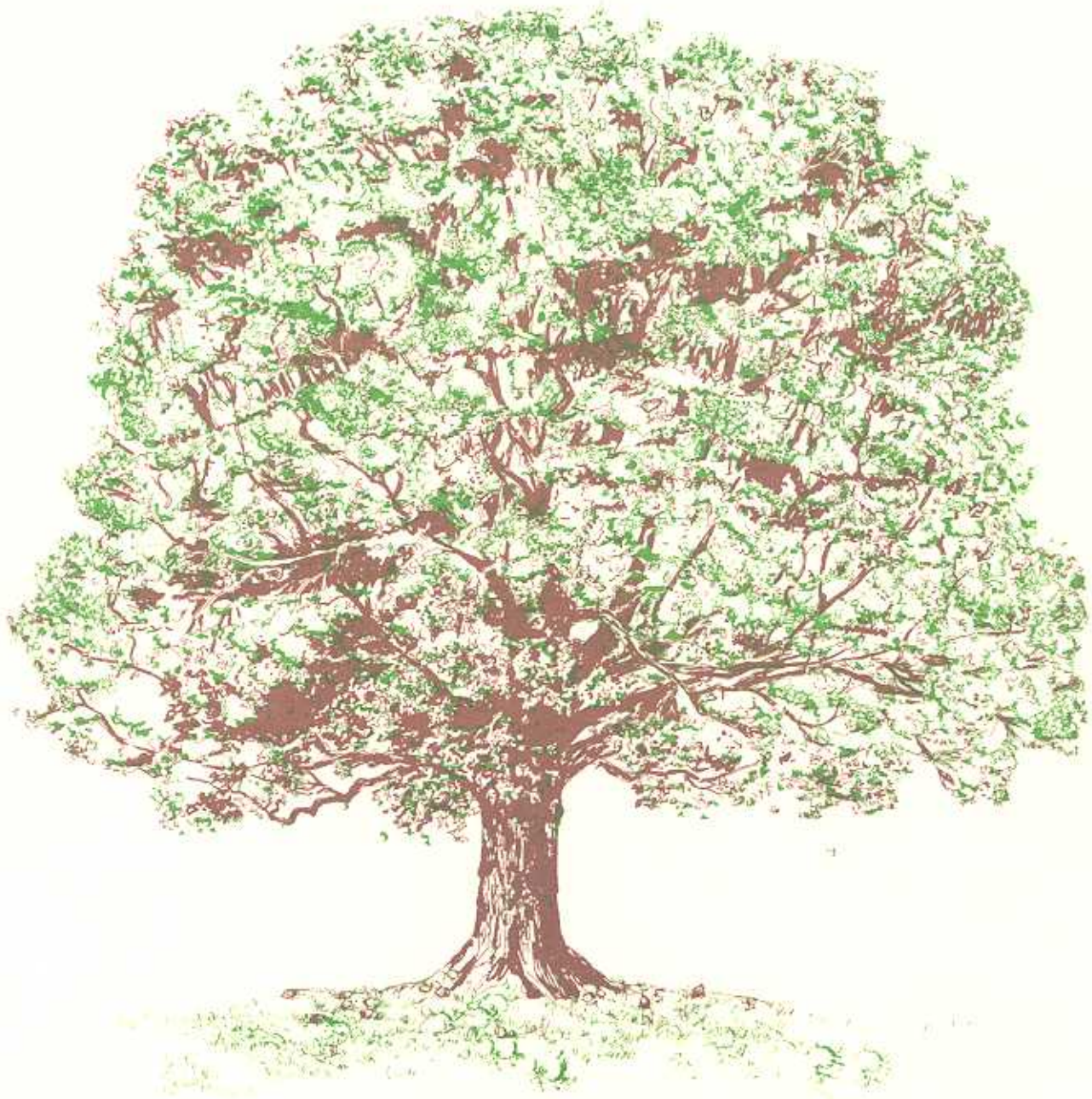


8/24

As You Grow, We Care.



1989 Annual Report
Cook County Department of Public Health

Table of Contents

From the Department Head	1
Division Summaries	
Communicable Disease Control	2
Health Statistics and Planning	3
Dental Health	3
Community Health	4
Health Education and Information	4
Public Health Nursing	5
Nutrition and WIC	5
Maternal and Child Health	6
Environmental Health	6
1989 Budget	7
Administrative Staff and Organizational Chart	8
Selected Disease and Population Statistics	9
Community Health Services	10
Clinic Health Services	11
Environmental Health Services	12
Acknowledgements	13/14
Over Twenty Years of Service	15
CCDPH Offices and Cook County Commissioners	back cover

From the Department Head



Karen L. Scott, M.D., M.P.H., C.C.D.P.H. Department Head

The Cook County Department of Public Health (CCDPH) is dedicated to the prevention of illness, early disease detection, and the promotion of personal and community health. Services are offered to all suburban Cook County residents. At over 75 suburban sites, the Department provides twelve types of clinics, serving over 55,000 people from 129 communities. CCDPH also provides educational programs, informational materials, environmental health services, disease surveillance and investigations, counseling, and birth and death registration certificates.

1989 was a year for moves and changes. While CCDPH's North District Office moved from Skokie to the new Court Building in Rolling Meadows, the Southwest Office moved from Oak Lawn to the new

Court Building in Bridgeview. As a result of these moves, some clinic locations changed as well.

One of the year's highlights has been the increased coordination of medical, social, and educational services with other departments of Cook County government: Cook County Hospital, Cook County Sheriff, Department of Building and Zoning, Department of Supportive Services, Environmental Control, Forest Preserve District, Oak Forest Hospital, Office of the Medical Examiner, President's Office of Employment and Training, and Superintendent of Schools.

Due in part to my excellent staff, I have received many honors and appointments: Chicago Area Public Service Award for outstanding Professional Employee and the Illinois Public Health Association Distinguished Service Award. Besides serving on many State and local committees, I have been appointed to the Governor's AIDS Advisory Council, the System Design and Management Committee of the Chicago and Cook County Health Care Summit, and the Cook County Solid Waste Advisory Committee.

CCDPH was evaluated by the Illinois Department of Public Health for meeting program standards for the ten State mandated public health programs, was certified for another two-year period, and will receive full State funding.

Communicable Disease Control



Communicable Disease Control Division prevents the spread of communicable diseases including AIDS and enforces the Rules and Regulations for the Control of the Communicable Diseases Act in Illinois.

Measles was the predominant public health concern in 1989. 390 rash investigations were conducted; 259 cases were confirmed; two suburban residents died. Special immunization clinics were set up in high risk communities, and over 12,000 suburban residents were immunized in the month of August alone. CCDPH continues to coordinate activities with the Chicago Board of Health and the Illinois Department of Public Health (IDPH). Region V of the U.S. Department of Health and Human Services presented CCDPH with a *Regional Health Administrators Citation* for excellent work during the measles epidemic.

Since 1983, more than 312 cases of AIDS have been reported among suburban residents from over 90 communities. Free HIV information, counseling, and/or testing was provided to 2,478 individuals. HIV counseling and testing was added to sexually transmitted disease (STD) and family planning clinics.

Besides providing epidemiological follow-up for all reported AIDS cases, nursing case management was offered to persons diagnosed with AIDS.

AIDS Education programs continued, and staff developed a pilot, behavior modification program called *Livingroom*. Three AIDS conferences were held for youth service providers, Black ministers, and Hispanics. With special federal money, CCDPH awarded AIDS education grants to four organizations serving minority populations in the suburbs. The department's AIDS education materials received a *First Place Helen Baker Award* for excellent public relations.

The Division continues to monitor pertussis cases. Free flu shots were given to over 8,000 suburban residents at over 30 suburban sites. Although the number of STD cases is relatively stable, staff are monitoring the increasing number of antibiotic resistant cases of gonorrhea. A Hepatitis conference was convened for over 125 medical care providers.

Health Statistics and Planning & Dental Health



Health Statistics and Planning Division processes, records and reviews all vital records. The Division ensures that the provisions of the Vital Records Act are followed.

The Division provides birth and death registration certificates for suburban residents. 23,544 birth certificates were filed, and 26,525 copies of birth certificates were issued. 13,097 death certificates were filed, 78,578 certified copies of death certificates were issued, and 8,493 burial permits were issued.

The division introduced a 24-hour service to funeral home directors for registering death certificates and obtaining burial permits.

Ongoing data collection, tabulation and reporting includes infant mortality and fetal death analysis, community demographic profiles, high risk birth information and community mortality/natality data. Service statistics are routinely evaluated and correlated to measure existing services and unmet community needs.

This division also maintains the public health information network (PHIN), a personal computer system linking CCDPH with the Illinois Department of Public Health and transmitting messages, updates, and urgent health bulletins.



Dental Health Division provides individual preventive and curative dental care for children and adults.

The Division opened two new clinics: Bridgeview and Rolling Meadows.

16,499 kindergarten through 8th graders received a weekly fluoride application, and 1,307 five through seven year olds participated in the Dental Sealant Program.

Besides staffing permanent clinics, dentists and hygienists provided mobile care to 1,127 CEDA headstart preschoolers at 14 sites.

192 migrant workers received dental services.

Community Health & Health Education



Community Health Division provides health services to reduce illness or health complications due to disability from non-communicable diseases or conditions.

The Division includes the hypertension, primary care, environmental impacts, diabetic education, and safety programs as well as the Mobile Health Clinic (WOW) and two, monthly refugee health clinics.

The H.E.A.R.T. program has enrolled 1200 persons with hypertension. Clients receive a series of quarterly letters designed to empower them to take control of their health. The clients respond with their latest blood pressure reading.

In cooperation with Access to Care, the Division assured low cost ambulatory illness care to 1,000 eligible suburban residents. With Loyola University Medical Center, CCDPH sponsored a weekly Adult/Child Medical Clinic which provided chronic illness and non-emergency medical care to over 900 clients in 1989.



Health Education and Information Division develops health information materials and outreach activities for all department programs. The Division provides community health education and resource information to the public and manages the public relations program of the department.

The Division continues to offer its award winning hypertension education series and has also initiated a *Training of Trainers*, whereby other health professionals are taught how to conduct the program themselves.

Besides giving health-oriented presentations, the Division organized two teen leadership conferences, twelve teacher training sessions, two major conferences for school health personnel, and gave technical assistance to many groups planning special programs.

Staff worked with the Comprehensive Health Education Task Force, developed in cooperation with the Illinois Chapter of the American Academy of Pediatrics, which is advocating for the coordination of school funding for family life and health education.

Over 500 educational materials were prepared and distributed.

Public Health Nursing & Nutrition and WIC



Public Health Nursing Division provides nursing support for all personal health programs and directly manages a school health program, vision and hearing screening program, day care health program, and mental health program.

The Division staffs twelve types of clinics with nurses, vision and hearing technicians, clerks, and/or social workers. In addition, staff assist DCFS in inspecting daycare centers, provide intensive counseling for pregnant and parenting teens and adults, screen middle school students for scoliosis, screen children for vision and hearing problems, and follow-up on parents of newborns with Sickle Cell Trait.

In an attempt to get pregnant women enrolled in prenatal care early, pregnancy testing was added as a part of home visits.



Nutrition and WIC Division works to improve the nutritional status of clients, particularly high-risk groups by providing diet counseling, education, and food vouchers.

The Division, which experienced a 28% client increase in 1989, is in the process of computerizing its client intake system, allowing for an additional 2,000 clients. While the new computers necessitate some clinic changes, clients benefit from a simplified coupon pick-up system.

A new WIC clinic opened in Blue Island.

Maternal and Child Health & Environmental



Maternal and Child Health Division administers the programs which provide continuous health supervision to mothers and children through well child, school age, prenatal and family planning clinics by giving physical exams, necessary laboratory tests, and immunizations. The Division manages most of the grant programs in the department.

The Division includes the Healthy Kids and Families With A Future grant programs.

Staff organized a coalition of hospitals to coordinate and plan prenatal and delivery care for north suburban women.

A new well child clinic was opened in Hoffman Estates.



Environmental Health Division provides ongoing environmental monitoring of health hazards from food, water, wastes, rodents, and insects. Corrects hazards under the authority of appropriate health and building ordinances.

Besides executing five of the State's ten mandated programs for local health departments, the Environmental Health Division has entered into agreement with IDPH to enforce the Ground Water Protection Act.

Through its Intergovernmental Agreement Program, the Division is under contract to eleven communities for food inspections services.

Staff initiated a new program to review plans for residential spas and continue evaluating the food sanitation programs of municipalities that perform their own food inspections. 207 suburban schools were inspected.

1989 Budget

COOK COUNTY CORPORATE APPROPRIATION	\$ 5,678,379
GRANT/SERVICE FUNDING	
AIDS	810,361
Basic Health	1,088,856
Chicago HMO/MCH Follow-up	2,500
Day Care	
Department of Children and Family Services (FWF)	68,185
Nursing	7,119
Dental	
CEDA	3,240
Delta	4,729
Public Aid	938
Diabetes in Pregnancy	34,600
Families With a Future (IMRI)	653,520
Food Inspection Program	
Intergovernmental Agreements	20,000
Summer Food	300
Healthy Kids	100,000
Hypertension	47,300
Prenatal	233,501
Preventive Health Block Grant	190,000
Refugee	
Coordination	12,064
Health Aides	30,919
Screening Exams (IDPA)	107,034
Immigrants	17,116
Scoliosis Screening	120
Sexually Transmitted Diseases	66,000
State Computer Information Link	766
SCC Tuberculosis Sanitarium	19,800
Title XX	
Health Support	25,000
Family Planning	250,058
Vaccines Provided by Federal/State Valued At	575,594
Vision and Hearing:	
State	66,000
School Agreements	1,600
WIC/Nutrition	447,500
TOTAL GRANT/SERVICE FUNDING	\$ 4,882,221
TOTAL CCDPH BUDGET	\$ 10,560,600

Administrative Staff

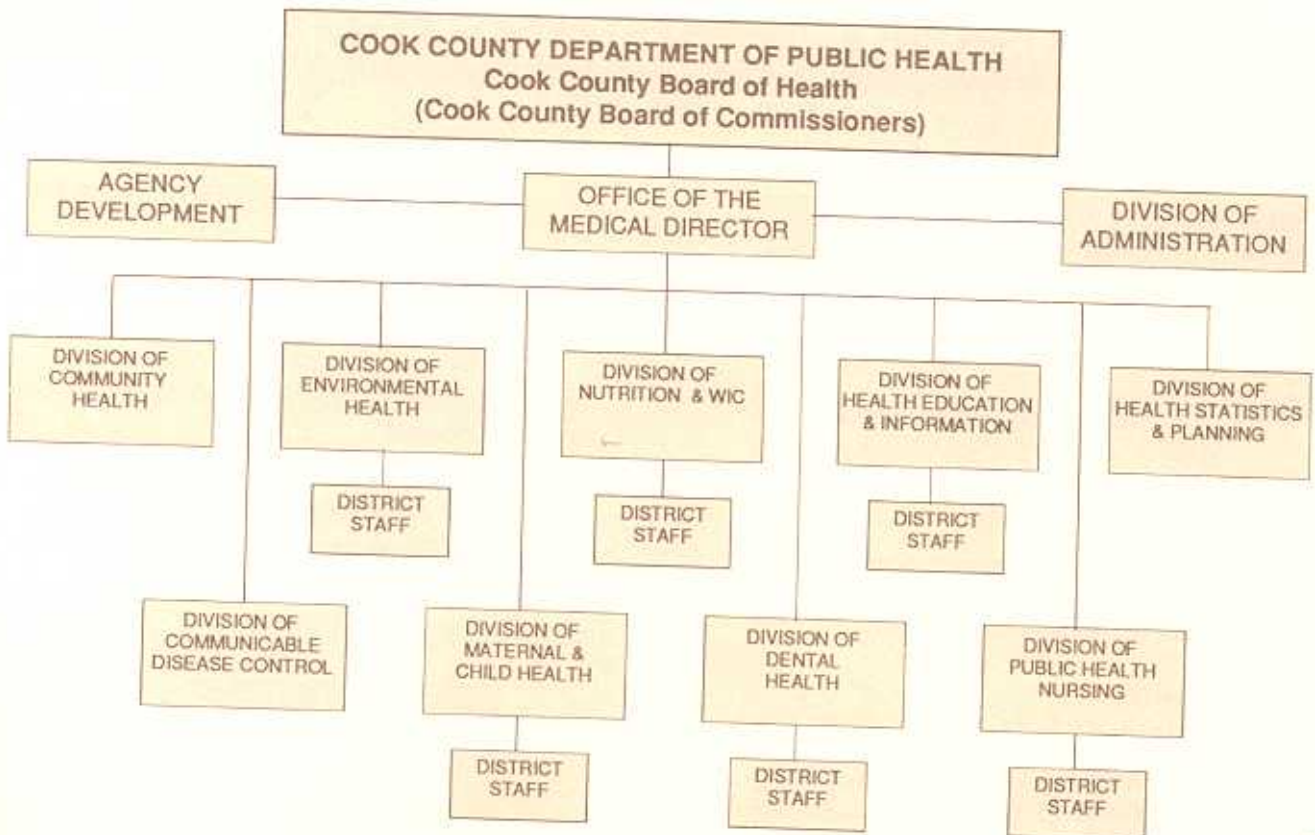
KAREN L. SCOTT, M.D., M.P.H.

DEPARTMENT HEAD

DIVISION DIRECTORS

Daniel P. O'Sullivan, M.S.	Administration
Ralph Cordell, Ph.D., A.C.E.	Communicable Disease Control
Timothy C. Canty, D.D.S., M.P.H., F.A.G.D.	Dental Health
Vicki Camba, R.N., M.B.A.	Agency Development
Charles Hackl, B.S.	Environmental Health
Addie C. Reninger, M.P.H.	Health Education and Information
Hansi Karin Trites, M.A.	Health Statistics and Planning
Jo Rose, R.N., M.S.	Community Health
Marjorie Ebenezer, M.D., M.P.H.	Maternal and Child Health
Alka Sood, R.D., M.S.	Nutrition and WIC
Rita Bakewell, R.N., M.S.	Public Health Nursing

Organizational Chart



Selected Reported & Investigated Diseases

AIDS/ARC (reported in 1989)	75
HIV+ (reported in 1989)	73
Amebiasis	15
Chickenpox	6007
Chlamydia	2117
Encephalitis	23
Gonorrhea	2517
Giardiasis	183
Hepatitis	
Hepatitis A	177
Hepatitis B	181
Non-A/Non-B	16
Unknown	7
Legionnaires Disease	9
Leprosy	0
Lyme Disease	23
Malaria	11
Measles	254

Meningitis	
Aseptic	70
Meningococcal	18
H Influenzae	18
Other	58
Pertussis	25
Psittacosis	1
Rabies Inquiries	30
Reyes Syndrome	0
Rubella	11
Salmonellosis	432
Shigellosis	143
Streptococcal Infection*	6425
Syphilis (all stages)	802
Taeniasis	2
Typhus (RMSF)	0
Toxic Shock Syndrome	5
<i>*(pharyngitis and scarlet fever)</i>	

Selected Population Statistics

POPULATION	2,316,070
Health Jurisdiction.	2,089,848

LIVE BIRTHS	
Total	31,778
Births to Teens	2,100

DEATHS	
Total	18,336
Infants	313
Neonatal (under 28 days)	224
Post-neonatal (28 days to 1 yr)	89

VITAL RECORDS	
Birth Certificates Filed	23,544
Copies Issued	26,525
Death Certificates Filed	13,097
Copies Issued	78,578

TEN LEADING CAUSES OF DEATH

1. Heart Disease	7,063
2. Cancer	4,382
3. Cerebro-vascular Disease	1,104
4. Pneumonia	679
5. All Accidents	624
Motor Vehicles	317
Other Accidents	307
6. Chronic Obstructive Lung Disease	374
7. Diabetes	318
8. Cirrhosis of the Liver	244
9. Suicide	229
10. Congenital Abnormalities and Diseases of Early Infancy	171

Community Health Services

COMMUNITY HEALTH EDUCATION SERVICES

Hypertension compliance

Series of 6-week classes	32
Number of class sessions	192
Number of locations	27
Persons enrolled	951

Presentations

Group presentations given	477
Group Education attendance	20,000
School served	106

Documents

Prepared	486
----------	-----

HIGH BLOOD PRESSURE CONTROL SERVICES

Persons screened	15,280
Persons in follow-up (tracking)	3,372

PRIMARY CARE SERVICES

Access to Care -- clients enrolled	963
Physicians' Co-op -- families enrolled	25

DIABETES SERVICES

Clients counseled	162
Group education clients	333
Clients receiving quarterly newsletter	70

ENVIRONMENTAL HEALTH IMPACTS

Client inquiries	202
Clients in group education (6 sessions)	481
Referrals and/or counseling	167

PUBLIC HEALTH NURSING SERVICES

New clients	8,225
-------------	-------

Home visits

Maternal and child health

Perinatal center referrals	1,669
Other high risk infants	240
Well baby clinic enrollment	1,226
Child abuse/neglect	52
Sudden Infant Death Syndrome	55
Handicapped children	53
Lead poisoning	47
Follow-up, supervision & referral	6,388

NURSING SERVICES (Continued)

Families With A Future	561
Communicable disease control	204
Tuberculosis	194
Mental health	93
Chronic disease	179
Other	134

Day care center services

Nursing inspection visits	285
Nursing consultation visits	429
Infant day care center contracts	33

Hearing conservation programs

School children

Screened	19,433
Referred	222

Pre-school children

Screened	14,384
Referred	204

School nursing services

Schools served	202
Nursing visits	352

Vision conservation programs

School children

Screened	14,833
Referred	1,672

Pre-school children

Screened	16,238
Referred	258

SOCIAL WORKER SERVICES

Clients Counseled	1450
-------------------	------

Clinic Based Services

ADULT HEALTH

Clinic sites

Permanent clinic sessions	59
Mobile clinic sites/sessions	78
Total clinic sessions	137
Persons examined	1,558
Referrals for further evaluation	730
Immunizations	546

DENTAL

Clinic sites	8
Procedures performed	84,652
Clients served	16,994

FAMILY PLANNING

Clinic sites	7
Clinic sessions	313
Pregnancy tests given	2,255
Patient visits	9,189

HIV (AIDS) TESTING (ANONYMOUS)

Clinic sites	4
Persons counselled and tested	658
Calls for information	2,068

IMMUNIZATION

Regular immunization clinics	
Sites	11
Vaccine doses distributed	86,195
Special immunization clinics	
Vaccine doses distributed	15,160

PRENATAL

Clinic sites	6
Clinic sessions	273
Client visits	6,588

PRIMARY CARE CLINIC

Clinic site	1
Client visits	903
Clients served	922

OTOLOGIC/OPHTHALMOLOGIC

Clinic sites	4
Clinic sessions	16
Persons examined	278
Persons referred for follow-up	187

REFUGEE HEALTH SCREENING

Clinic sites	2
Clinic sessions	28
Refugees screened	481
Immigrants/Amnesty screened	107
Immunizations	160

SCHOOL AGE

Clinic sites	4
Clinic sessions	42
Persons examined	741

SEXUALLY TRANSMITTED DISEASES

Clinic sites	4
Clinic sessions	303
Persons examined	5,504

WELL CHILD

Clinic sites	17
Clinic sessions	214
Client visits	5,857

WIC (Supplemental Nutrition Program)

Clinic sites	20
Clinic sessions	912
New clients enrolled	11,043
<i>Clients served</i>	
Women	2,208
Infants	4,265
Children	4,570
Total client visits	109,955
Clients issued food coupons	92,659

Environmental Health Services

DAY CARE CENTERS	
Inspections performed	355
FOOD SERVICE ESTABLISHMENTS & RETAIL FOOD STORES	
Licensed	331
Inspections performed	1,531
Plans reviewed	10
FOOD & FOODBORNE ILLNESS COMPLAINTS	
Investigations performed	226
INTERGOVERNMENTAL AGREEMENTS	
Number of communities	13
Number of food facilities	316
Inspections performed	775
Plans reviewed	25
LEAD POISONING INVESTIGATIONS	
Inspections performed	16
MOBILE HOME PARKS	
Licensed	38
Inspections performed	190
MOTELS	
Licensed	12
Inspections performed	17
NUISANCE COMPLAINTS	
Received	243
Inspections performed	1,125
PRIVATE & NON-COMMUNITY WATER SUPPLIES	
Water samples collected- <i>private</i>	483
Analysis opinions rendered- <i>private</i>	950
Water samples collected- <i>non-community</i>	444
Analysis opinions rendered- <i>non-community</i>	550
PUBLIC SCHOOL LIFE/SAFETY EVALUATIONS	
Inspections performed	163
SEPTIC TANK & SEEPAGE TILE SYSTEMS	
Plans processed for approval, revision, or repair	293
Inspections performed	426
SEPTIC TANK CLEANERS	
Permits issued	95
SOLID WASTE DISPOSAL SURVEYS	
Number conducted	140
SWIMMING POOLS & SPAS	
Plans approved- <i>private</i>	63
Inspections performed- <i>public</i>	1,057
WELL & SEPTIC SYSTEM MORTGAGE EVALUATIONS	
Number of evaluations	229
Inspections performed	389
NEW WELLS	
Permits issued	103
Inspections performed	10
Water samples collected	10
Analysis opinions rendered	10
ABANDONED WELLS	
Number sealed	9
Inspections performed	5

CCDPH is fortunate to receive the support and cooperation of many groups and organizations throughout suburban Cook County. Our deepest gratitude to those who helped make our services a success in 1989.

Alma Clinic
Maywood
Alexian Brothers Medical Center
Elk Grove Village
Arlington Heights Headstart
Arlington Heights
Arlington Heights Health Department
Arlington Heights
American Legion Hall
Chicago Ridge
Association for Practitioners in Infection Control
Mundelein
B.E.-H.I.V.
Evanston
Bedford Park Library
Bedford Park
Berwyn-Cicero Council on Aging
Cicero
Bellwood Clinic
Bellwood
Bellwood Park District -- Kennedy Center
Bellwood
Bellwood Village Hall
Bellwood
Bethel Community Center
Chicago Heights
Biela Center
Crestwood
Blackhawk Health Center
Park Forest
Blackhawk School
Park Forest
Blue Cap School
Blue Island
Blue Island/Calumet Park C.E.D.A.
Calumet Park
Bremen Township
Markham
Broadview Public Library
Broadview
Brookfield Zoo
Brookfield
Calumet Park Headstart
Calumet Park
Calumet Park Township Senior Center
Calumet Park
Calumet Township Hall
Calumet Park
C.E.D.A. Northwest
Arlington Heights
C.E.D.A. Southwest
Summit
Center on Deafness
Des Plaines
Chicago Board of Health
Chicago
Chicago Heights C.E.D.A.
Chicago Heights

Chicago Metropolitan Planning Council
Chicago
Children's Center of Cicero & Berwyn
Cicero
Christ United Church of Christ
Des Plaines
Christ United Presbyterian Church
Hanover Park
Christian Hill Full Gospel Church
Orland Hills
Cicero Clinic
Cicero
Cicero Health Department
Cicero
Cicero Village Hall
Cicero
Cicero-Berwyn Headstart
Cicero
City of Des Plaines -- Human Resources
Department
Des Plaines
Community Chest of Cicero
Cicero
Community Presbyterian Church
Wheeling
Cook County Hospital Nurse Midwives
Chicago
Cook County Sheriff's Office
Maywood
Cook County Sheriff's Youth Services
Maywood
Cottage Grove Medical Center
Ford Heights
COURAGE
Maywood
Des Plaines Leisure Center
Des Plaines
Des Plaines Mall
Des Plaines
Des Plaines Mobile Home Park
Des Plaines
Des Plaines Senior Center
Des Plaines
Des Plaines Valley C.E.D.A.
Bridgeview
District 214 -- ESL Program
Arlington Heights
Dixmoor Village Hall
Dixmoor
East Chicago Heights Headstart
East Chicago Heights
Elk Grove Senior Center
Elk Grove Village
Emmanuel Lutheran Church
Steger
Ernest Martin Clinic
Chicago Heights
Evanston C.E.D.A.
Evanston
Faith Bailey Health Center
Calumet City
Faith United Protestant Church
Park Forest
Family Services
Hodgkins
Family Service & Mental Health Center
LaGrange
Fire Station #1
Chicago Heights
Fire Station #1
Chicago Ridge

First Baptist Church
Hoffman Estates
First Methodist Church
Chicago Heights
First United Methodist Church
Harvey
Ford Heights Community Center
Ford Heights
Ford Heights C.E.D.A.
Ford Heights
Ford Heights Senior Center
Ford Heights
Forestview Educational Center
Arlington Heights
Funeral Directors Assoc. of Greater Chicago
Evergreen Park
G.M. Electromotive
McCook
Grace United Methodist Church
Blue Island
Hanover Park Headstart
Hanover Park
Hanover Township Senior Center
Bartlett
Happy Hours Preschool
Chicago Heights
Harper College
Palatine, Prospect Heights
Harvey Area Child and Family Development
Center
Markham
Harvey Board of Health
Harvey
Harvey Family Medical Center
Harvey
Harvey Headstart
Harvey
Harvey Senior High Rise
Harvey
Harvey Y.M.C.A.
Harvey
Heights Medical Center
Chicago Heights
Hollstrom Corporation
Franklin Park
Hines V.A. Hospital
Hines
Hinsdale Hospital
Hinsdale
Hispanic Health Advisory Council
Blue Island & Chicago Heights
H.I.V. Coalition for North Suburban Cook County
Wilmette
Holy Family Hospital
Des Plaines
Howard Mohr Center
Forest Park
Illinois Department of Public Health
Springfield/Chicago
Illinois Foundation of Dentistry for
the Handicapped
Illinois Migrant Council
Palatine, Sauk Village, & Chicago Heights
Illinois Nurses Association
Local Unit
Indian Springs C.E.D.A.
Indian Springs
Junior League of Evanston, Inc.
Evanston
Justice C.E.D.A.
Justice

gements

- Keeling Center
Park Forest
- LaGrange Area Headstart
Brookfield
- League of Women Voters
Chicago
- Lemont Township
Lemont
- Leydon Township
Franklin Park
- Lincoln Memorial Medical Clinic
Robbins
- Little Company of Mary Hospital
Evergreen Park
- Loyola University Medical Center
Maywood
- Lutheran General Hospital
Park Ridge
- Lyons Township Hall
Countryside
- MacNeal Hospital
Berwyn
- Maine Township
Niles
- Maywood C.E.D.A.
Maywood
- Maywood Child Development Center
Maywood
- Markham Community House
Markham
- Markham Youth Committee
Markham
- Meadows Baptist Church
Rolling Meadows
- Melrose Park Library
Melrose Park
- M.E.R.C. -- Minority Economic Resource
Corporation
Westchester
- Memorial Park District
Bellwood/Hillside
- Methodist Church
Tinley Park
- Morton College
Cicero
- Mt. Prospect Senior Center
Mt. Prospect
- North Berwyn Park District
Berwyn
- Northwest Community Hospital
Arlington Heights
- North Riverside Recreation Center
North Riverside
- Northwest Municipal Conference
Des Plaines
- Northwest Municipal Health Care Council
Des Plaines
- Northwest Suburban Head Start
Arlington Heights
- Nue ros Horizontes
Melrose Park
- Oak Park Headstart
Oak Park
- Oakton Community College
Park Ridge, Skokie
- Operation Uplift, Inc.
Maywood
- Oremus Center
Bridgeview
- Orland Center School
Orland Park
- Orland Township
Orland Park
- Orland Township Headstart
Orland Park
- Orland Park Place Mall
Orland Park
- Our Lady of Ransom
Niles
- Owens - Illinois
Chicago Heights
- P.A.R.C.'s Early Intervention Program (P.I.E.P.)
Bellwood
- Palatine Presbyterian Church
Palatine
- Palatine Township Hall
Palatine
- Park Forest Health Department
Park Forest
- Park Place Senior Center
Arlington Heights
- Park Ridge Senior Center
Park Ridge
- Pavillion Senior Center
Wheeling
- People's Organization of Robbins
Robbins
- Piszczek Clinic -- Suburban Cook County T.B.
Sanitarian District
Forest Park
- Planned Parenthood
Chicago
- P.O.E.T.
Maywood
- Prairie State Headstart
Chicago Heights
- Proviso Council on Aging
Bellwood
- Rand Grove Apartments
Palatine
- Raytheon Cooperation
Melrose Park
- Resurrection Lutheran Church
Franklin Park
- Rich Township Community Center
Richton Park
- Richton Park Police Department
Richton Park
- Rixson-Firemark
Franklin Park
- Robbins Family Service
Robbins
- Robbins C.E.D.A.
Robbins
- Robbins Preschool
Robbins
- Rush North Shore Medical Center
Skokie
- Saint Benedicts
Blue Island
- Saint Francis Hospital
Evanston
- Saint Joseph the Worker
Wheeling
- Saint Martin's Church
Des Plaines
- Saint Terrence Church
Alsip
- Sauk Village Hall
Sauk Village
- Second Baptist Church
Maywood
- Secretary of State Police
Maywood
- Seven Holy Founders Church
Calumet Park
- Schaumburg Township Office
Hoffman Estates
- Sharp's Memorial Hall
Melrose Park
- Shorman Hospital
Elgin
- Skokie Village Hall
Skokie
- S.M.A. - Flossmoor
- South Suburban Community College
South Holland
- South Suburban Environmental Health Council
Alsip
- South Suburban Hospital
Hazel Crest
- South Suburban Mayors/Managers Association
Homewood
- South Suburban Y.M.C.A.
Olympia Fields
- Southwest Community Services
Tinley Park
- Southwest Conference of Local Government
Palos Hills
- Southwest Suburban Council on Aging
LaGrange
- Spectrum Youth and Family Services
Hoffman Estates
- Suburban Area Agency on Aging
Chicago
- Suburban Primary Health Care Council
Hinsdale
- Summit C.E.D.A.
Summit
- Tefft Middle School
Streamwood
- Thomton Township
South Holland
- Trident Center
Niles
- Trinity Lutheran Church
Des Plaines
- Triton Community College
River Grove
- United Methodist Church
Midlothian
- United Methodist Church
Tinley Park
- Village of Morton Grove
Morton Grove
- West Conference of Mayors
Western Springs
- West Suburban Health Care Council
Forest Park
- West Suburban Hospital
Oak Park
- Wheeling High School
Wheeling
- Willowway Terrace
Des Plaines
- Woodside Bible Chapel
Maywood
- Woody Winston Medical Center
Phoenix
- Worth Township Hall
Alsip
- Y.M.C.A.
Harvey

Over Twenty Years of Service



Our thanks to the CCDPH employees listed below who have been with the department for over twenty years. Many of them have seen the department grow, and many of them have nurtured that growth. We are grateful for their dedication to public health and for the wisdom and experience they bring to the department.

Marian Alich

*Nursing Supervisor
North District Office*

Rita Bakewell

*Director of Nursing
Administrative Office*

Marie Battie

*Clerical
Environmental Health Division*

Barbara Coyle

*Assistant Supervisor
Southwest District Office*

Joanne Eller

*Clerical
Division of Administration*

Donna Fiore

*Clerical
Communicable Disease Control Division*

Stanley Gizewski

*Sanitarian Supervisor
Southwest District Office*

Nathaniel Jones

*Driver
Division of Administration*

Evelyn Kersten

*Clerical
South District Office*

Ruth Lloyd

*Clerical
South District Office*

Thelma Lloyd

*Clerical
Environmental Health Division*

Dr. Vera Kahn

*Part-time Clinician
Maternal and Child Health Division*

Eleanor McDonald

*Assistant Supervisor
North District Office*

Marilyn McDonald

*Assistant Director of Nursing
Administrative Office*

Evelyn Neumann

*Clerical
Division of Administration*

Addie Reninger

*Director of Health Education & Information
Administrative Office*

Warren Russell

*Sanitarian
North District Office*

Steve Shemanski

*Sanitarian Supervisor
South District Office*

Christine Smith

*Clerical
Health Statistics and Planning Division*

Zelma Wilson

*Clerical
Environmental Health Division*

Printed on Recycled Paper.
A Service of Cook County Government for Suburban Cook County Residents.

Administrative Office

Cook County Department of Public Health
4th District Circuit Court Building
1500 S. Maybrook Drive
Maywood, Illinois 60153

Bulk Rate
U.S. Postage
PAID
Permit No. 15
Maywood, IL

*Address
Change
Requested*



*A service of Cook County Government
for suburban Cook County residents.*

BOARD MEMBERS

George W. Dunne, President

Charles R. Bernardini

Jerry Butler

Allan C. Carr

Frank A. Damato

Marco Domico

Robert P. Gooley

Carl R. Hansen

Irene C. Hernandez

Rose-Marie Love

Joseph D. Mathewson

Mary M. McDonald

Herbert T. Schumann, Jr.

Richard A. Siebel

Bobbie L. Steele

John H. Stroger, Jr.

Samuel G. Vaughan

ADMINISTRATIVE OFFICE

Cook County Department of Public Health
4th District Circuit Court Building
1500 S. Maybrook Drive
Maywood, Illinois 60153
Telephone: (708) 865-6100

DISTRICT OFFICES

NORTH

3rd District Circuit Court Building
2121 Euclid Avenue
Rolling Meadows, IL 60008
Telephone: (708) 818-2860

WEST

507 Washington Blvd.
Maywood, Illinois 60153
Telephone: (708) 344-6052

SOUTHWEST

5th District Circuit Court Building
10220 S. 76th Avenue
Bridgeview, IL 60455
Telephone: (708) 974-6160

SOUTH

6th District Circuit Court Bldg.
165th & S. Kedzie Parkway
Markham, Illinois 60426
Telephone: (708) 210-4500