

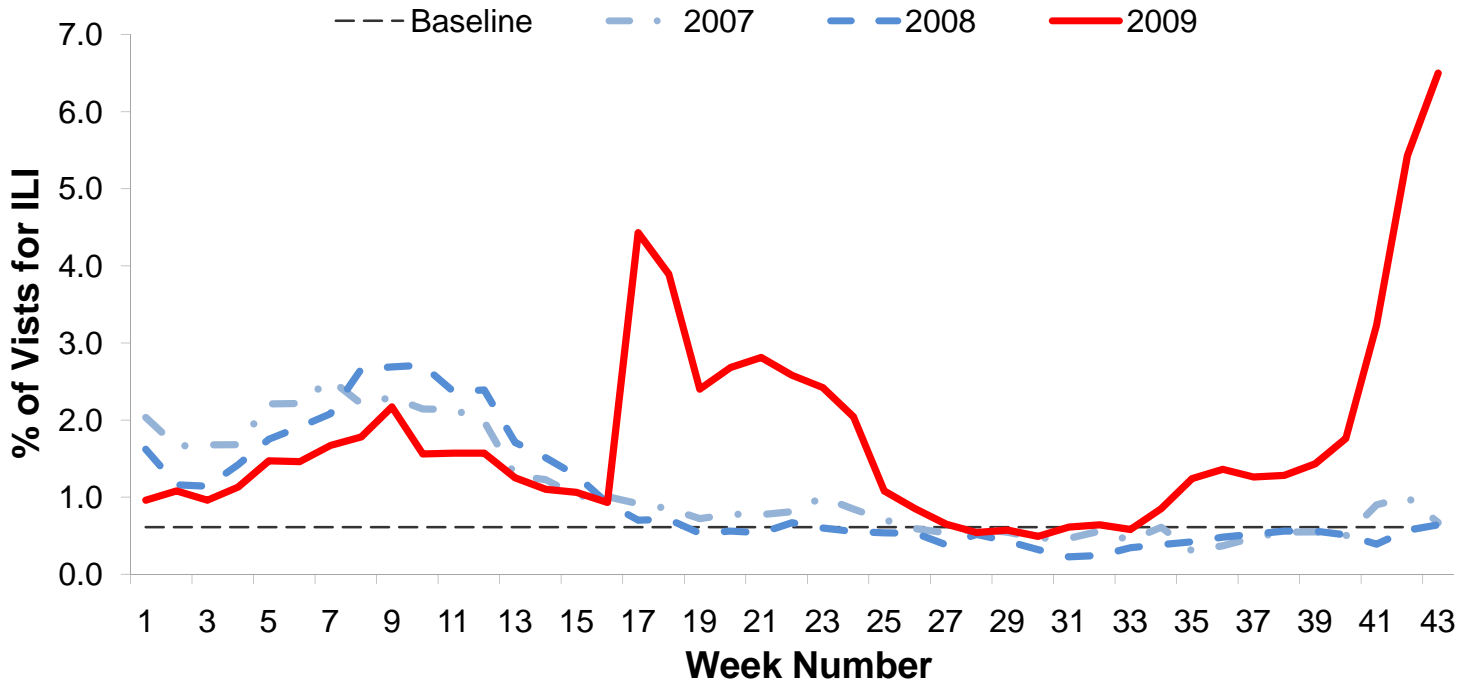


**Influenza Surveillance Report  
Week 43: October 25<sup>th</sup> – 31<sup>st</sup>, 2009**

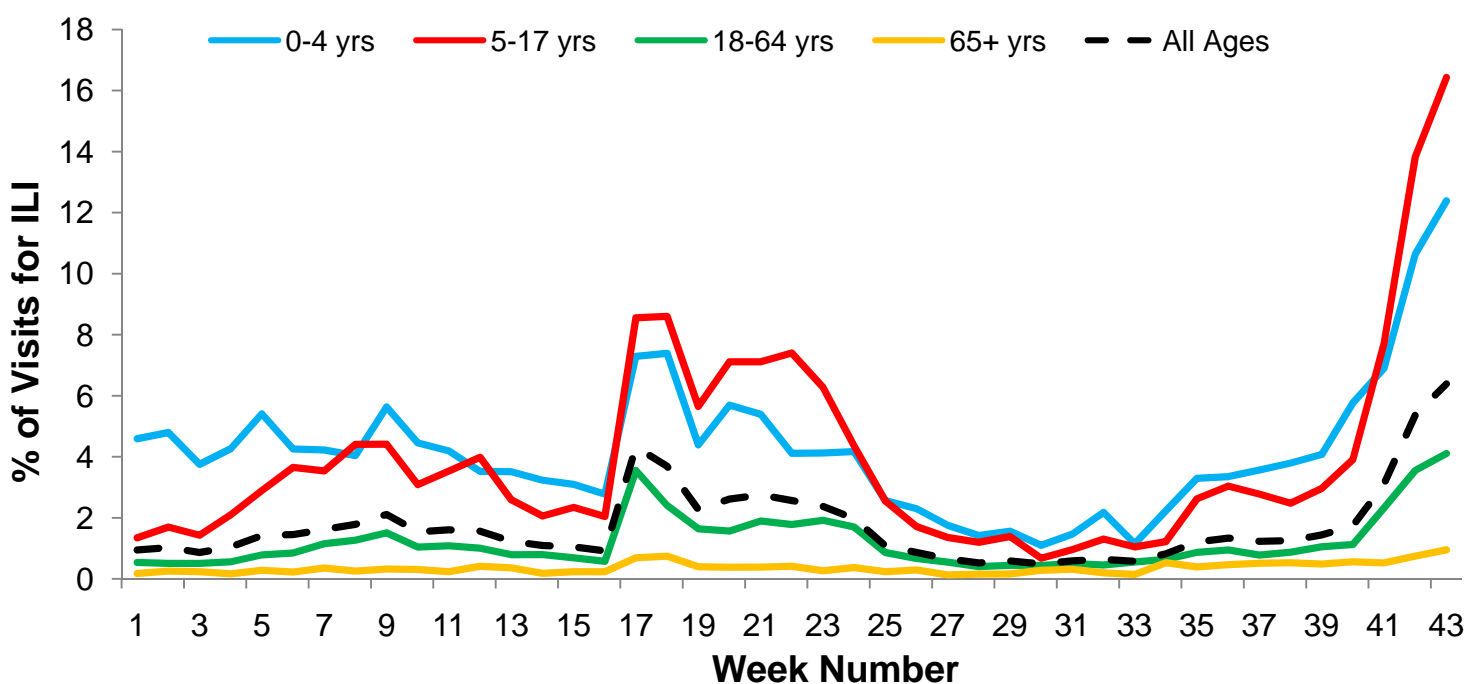
**I. Influenza Summary to Date**

Influenza surveillance for suburban Cook County\*\* involves the weekly collection of data from a sample of hospitals, private physician's offices, and laboratory data. Our sentinel participants reported the following aggregate measures: Syndromic Surveillance: 6.5% ILI<sup>1</sup>, Sentinel Sites: 13.23% ILI<sup>2</sup>. 1,589 (43.93%) specimens tested by participating laboratories<sup>3</sup> were positive for influenza, of which 99.62% of sub-typed influenza A viruses were 2009 H1N1. This is the sixth straight week that influenza activity has increased, and the activity level for week 43 is 20% higher than the previous week. To date, suburban Cook County has had 252 hospitalized cases of confirmed 2009 H1N1, 6 2009 H1N1 deaths, and 1 pediatric influenza death. In week 43, sixty-three 2009 H1N1 hospitalizations were reported to CCDPH. Thank you to all of our surveillance partners for their help in collecting this information.

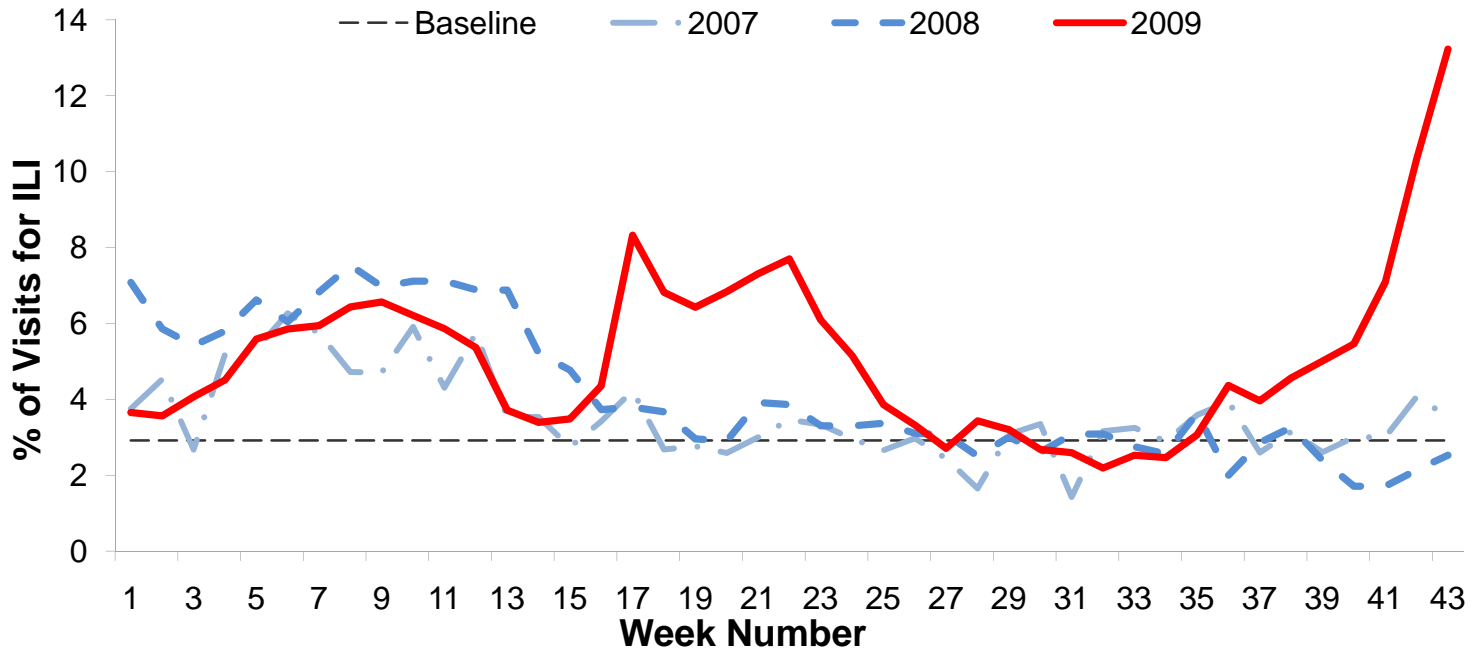
**II. Syndromic Surveillance Data<sup>1</sup>**



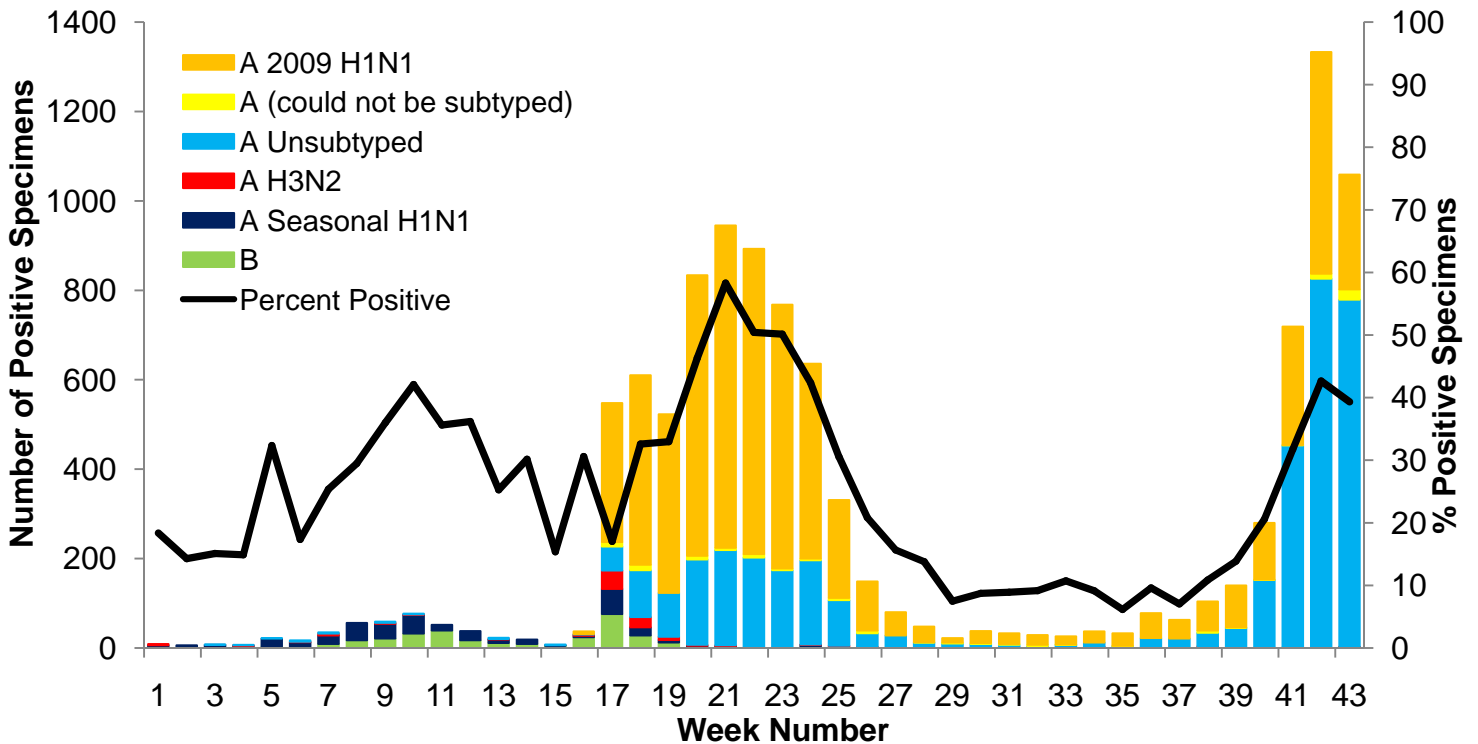
**III. Syndromic Surveillance by Age Group Data<sup>1</sup>**



#### IV. Sentinel Provider Data<sup>2</sup>

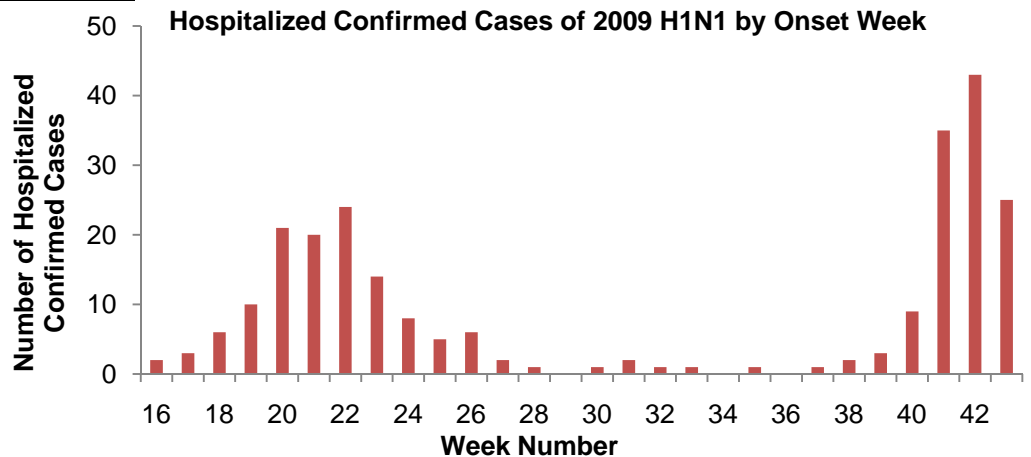


#### V. Laboratory Surveillance Data<sup>3</sup>

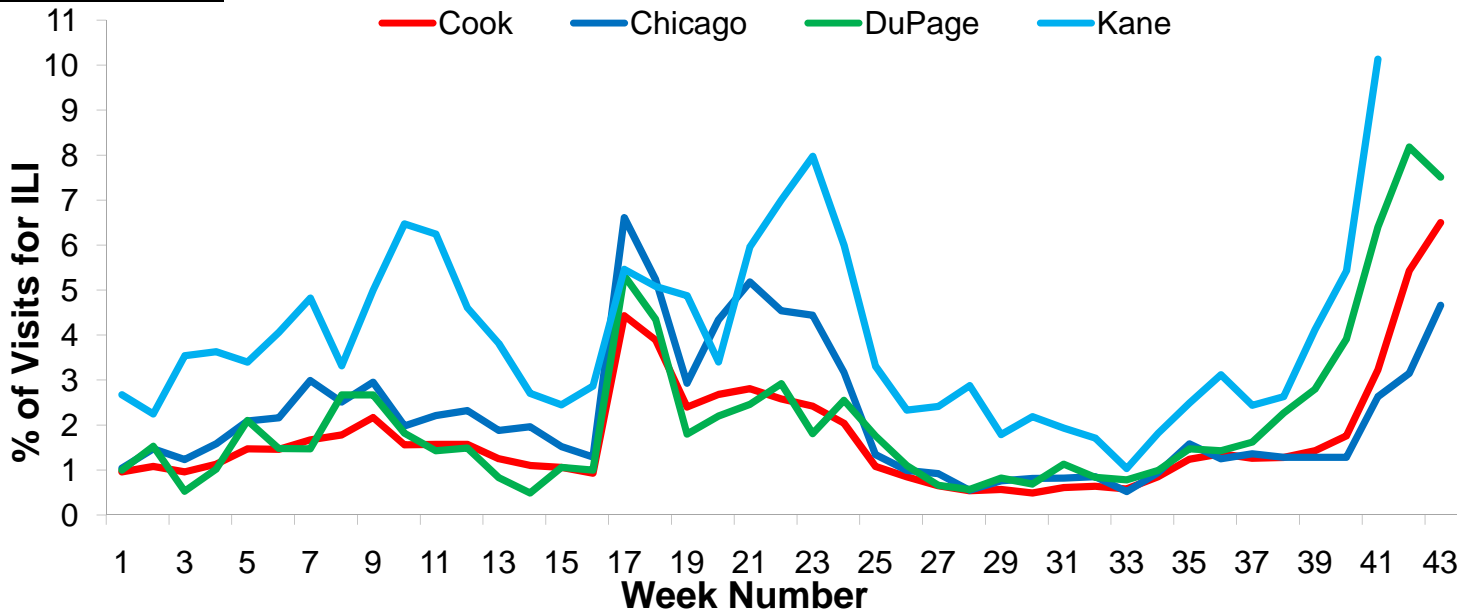


#### VI. 2009 H1N1 Hospitalization and Death Data<sup>4</sup>

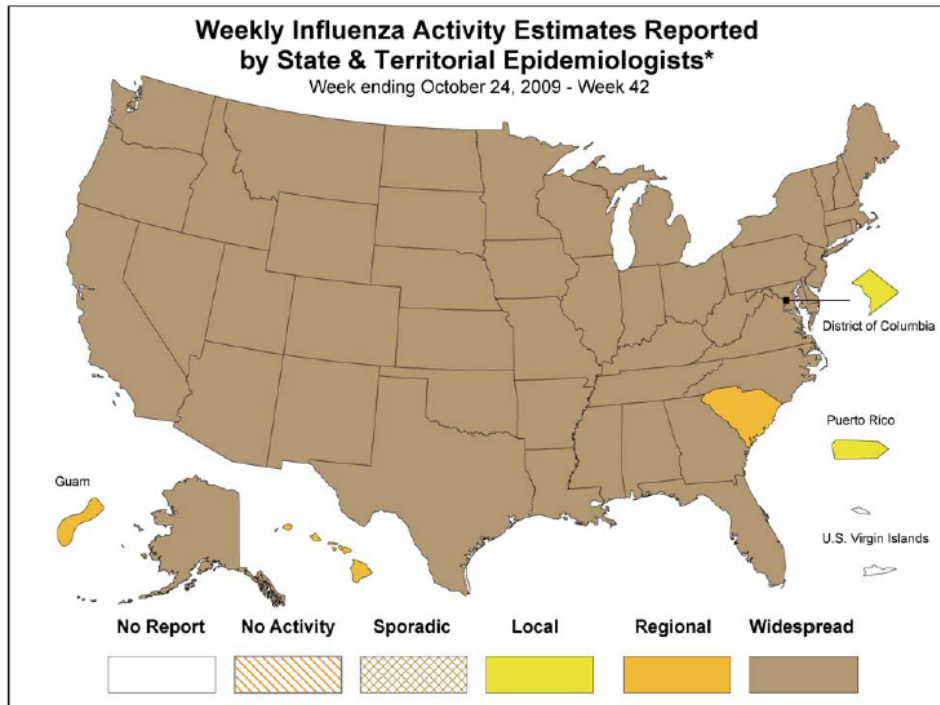
Hospitalized Case Counts		#
Total Cases		252
Total Deaths		6
Incidence by Age		#
0-4		40
5-24		87
25-49		66
50-64		44
65+		9
Unknown		6
Incidence by Region		#
North		83
West		62
Southwest		39
South		68



## VII. Regional Data



## VIII. Illinois and U.S. Data<sup>5†</sup>



\* This map indicates geographic spread & does not measure the severity of influenza activity

(All data are preliminary and may change as more reports are received.)

For further information about influenza activity see: [City of Chicago Surveillance Report](#), [IDPH Surveillance Report](#), [CDC Surveillance Report](#), [Distribute National Surveillance](#).

1. Syndromic surveillance influenza-like-illness (ILI) syndrome is defined as a symptom complex fever and cough or sore throat from ESSENCE. 32 hospital EDs participate in ESSENCE. ILI = # of ED visits for ILI / total # of ED visits.
2. ILI is defined as fever  $\geq 100^{\circ}\text{F}$ , cough and/or sore throat in the absence of a known cause other than influenza. 5 hospital EDs and 8 physician offices are participating CDC sentinel sites.
3. Laboratory surveillance includes viral culture, RT-PCR, and the rapid antigen test. Not all cases are suburban Cook County Residents. Participating laboratories: IDPH, NSUHS, and ACL.
4. Hospitalization and death data are only for suburban Cook County residents (excludes Evanston, Skokie, Oak Park, and Stickney). Data includes reported cases for the presented week.
5. <http://www.cdc.gov/flu/weekly/index.htm>

† **No activity:** no laboratory confirmed cases of influenza and no reported increase in cases of ILI.

**Sporadic:** small number of laboratory confirmed influenza cases or a single laboratory confirmed influenza in a single region of the state.

**Local:** Outbreaks of influenza or increases in ILI and recent laboratory confirmed influenza in a single region of the state.

**Regional:** Outbreaks of influenza or increases in ILI and recent laboratory confirmed influenza in at least two but less than half the region of the state.

**Widespread:** Outbreaks of influenza or increases in ILI cases and recent laboratory confirmed influenza in at least half the region in the state.