

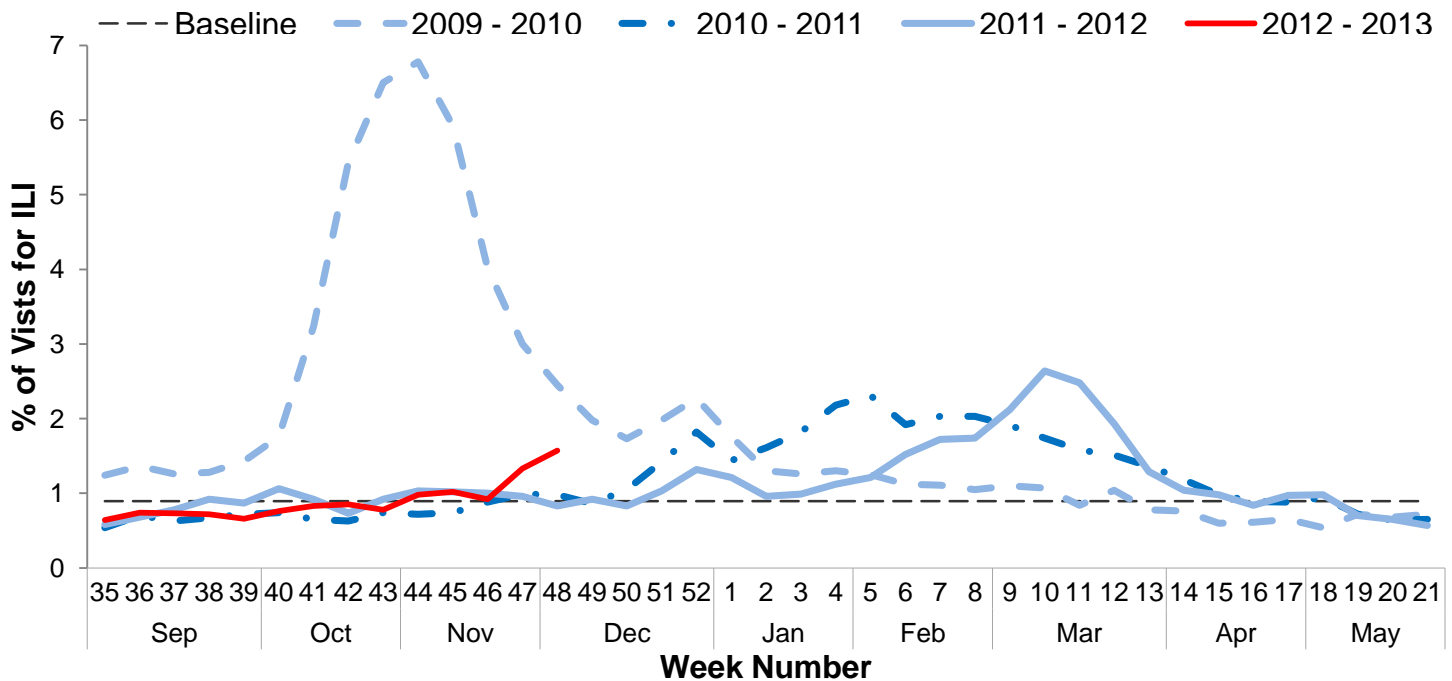


**Influenza Surveillance Report  
Week 48: November 25<sup>th</sup>–December 1<sup>st</sup>, 2012**

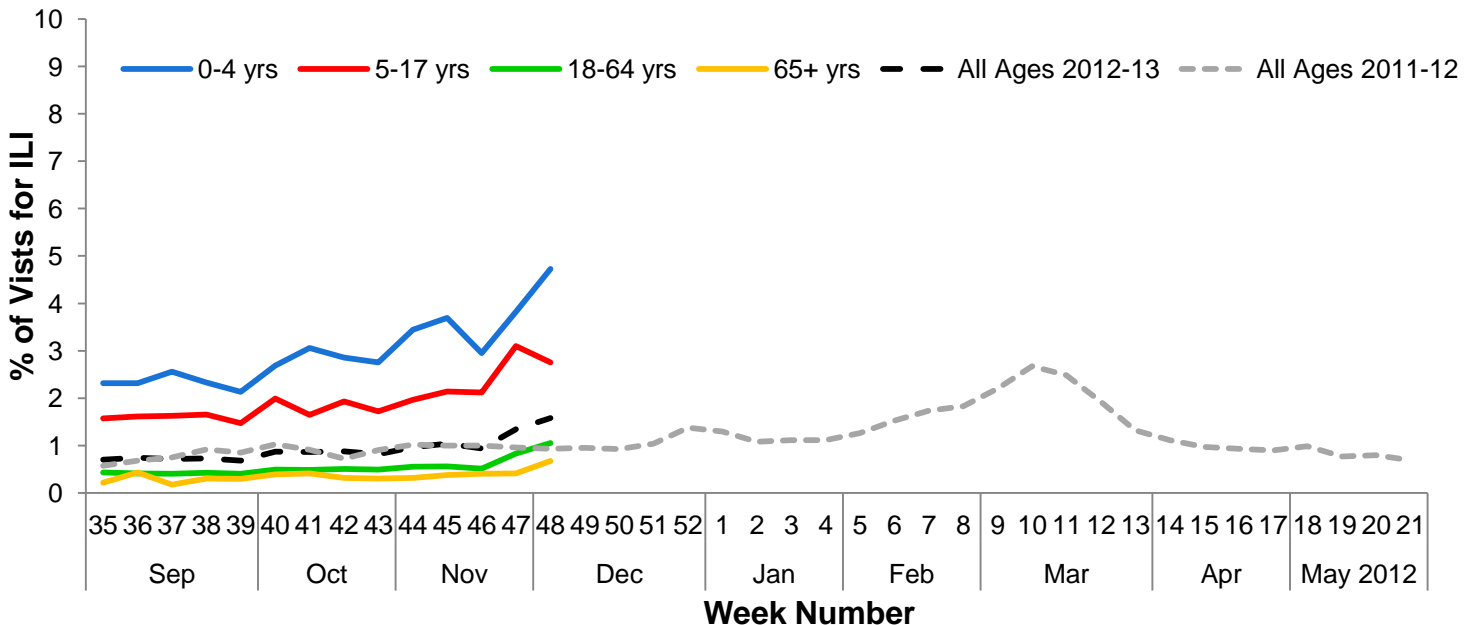
**I. Influenza Summary to Date**

Influenza surveillance for suburban Cook County\*\* involves the weekly collection of data from a sample of hospitals, private physician's offices, and laboratory data. Influenza-like illness (ILI) is currently increasing. Our sentinel participants reported the following aggregate measures: Syndromic Surveillance: 1.57% ILI<sup>1</sup>, Sentinel Sites: 4.93% ILI<sup>2</sup>. 83 specimens tested by participating laboratories were positive for influenza. Since Week 35 (8/26/2012), suburban Cook County has had seven cases of influenza-associated intensive care unit (ICU) hospitalizations. During week 48, three ICU hospitalizations due to influenza infection were reported to CCDPH. During this period, three suburban Cook County schools reported increased student absenteeism due to ILI. Thanks to all of our surveillance partners for their help in collecting this information.

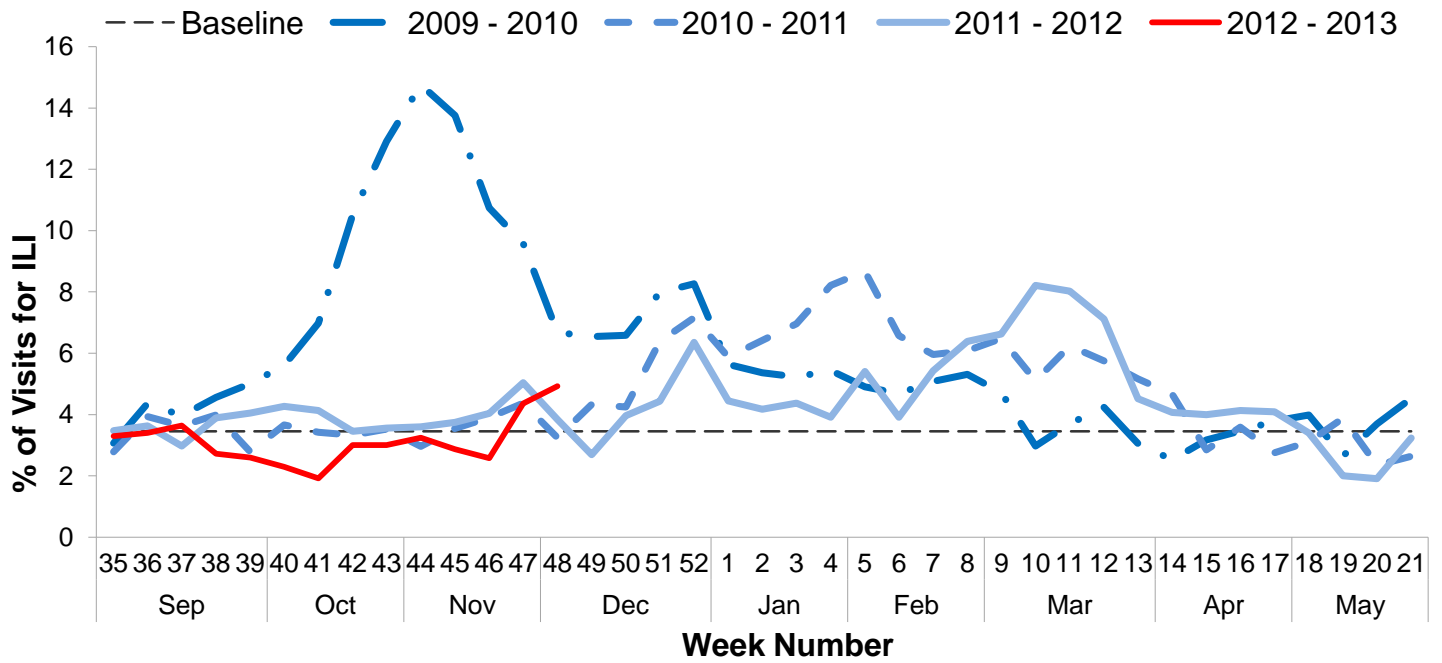
**II. Syndromic Surveillance Data<sup>1</sup>**



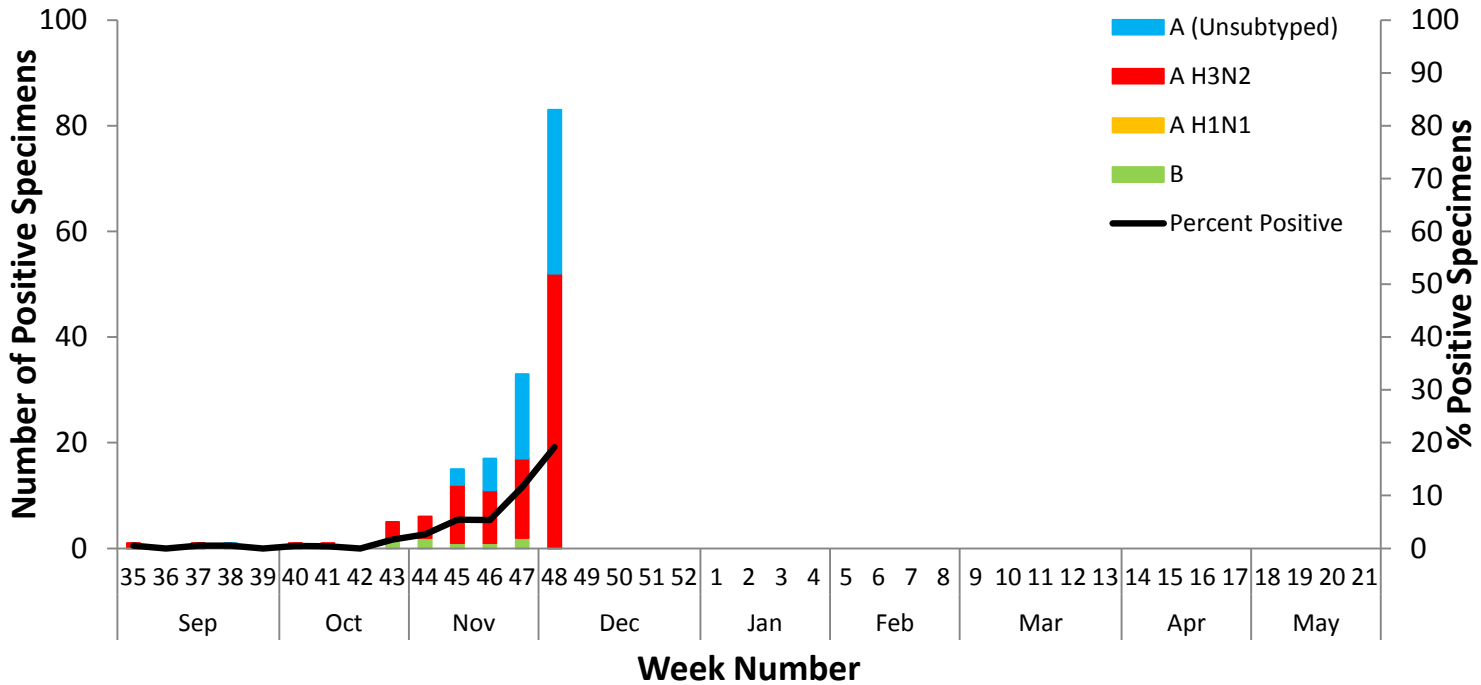
**III. Syndromic Surveillance by Age Group Data<sup>1</sup>**



#### IV. Sentinel Provider Data<sup>2</sup>



#### V. Laboratory Surveillance Data<sup>3</sup>



#### VI. ICU Hospitalization Data<sup>4</sup>

Hospitalized Case Counts		#
Total Cases		7
Incidence by Age		#
0-4		2
5-24		0
25-49		1
50-64		1
65+		3
Incidence by Region		#
North		2
West		0
Southwest		3
South		2

