

# COOK COUNTY DEPARTMENT OF PUBLIC HEALTH

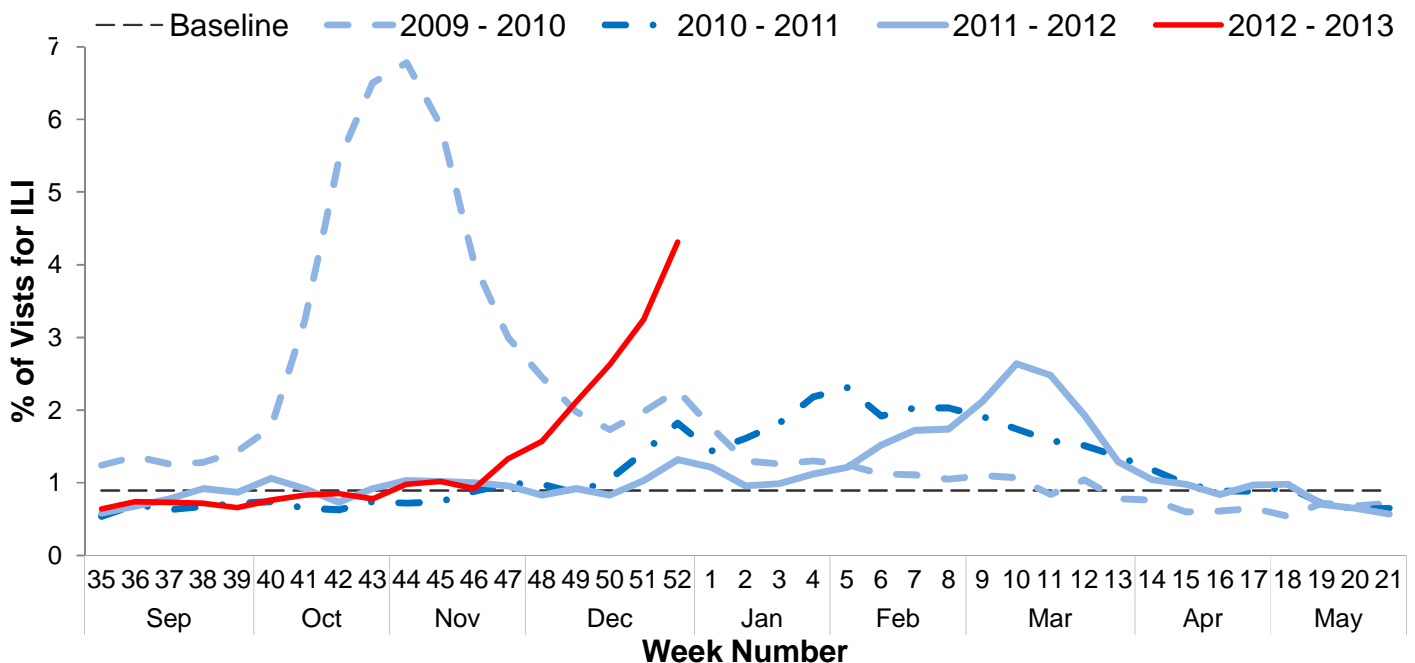


## Influenza Surveillance Report Week 52: December 23-29, 2012

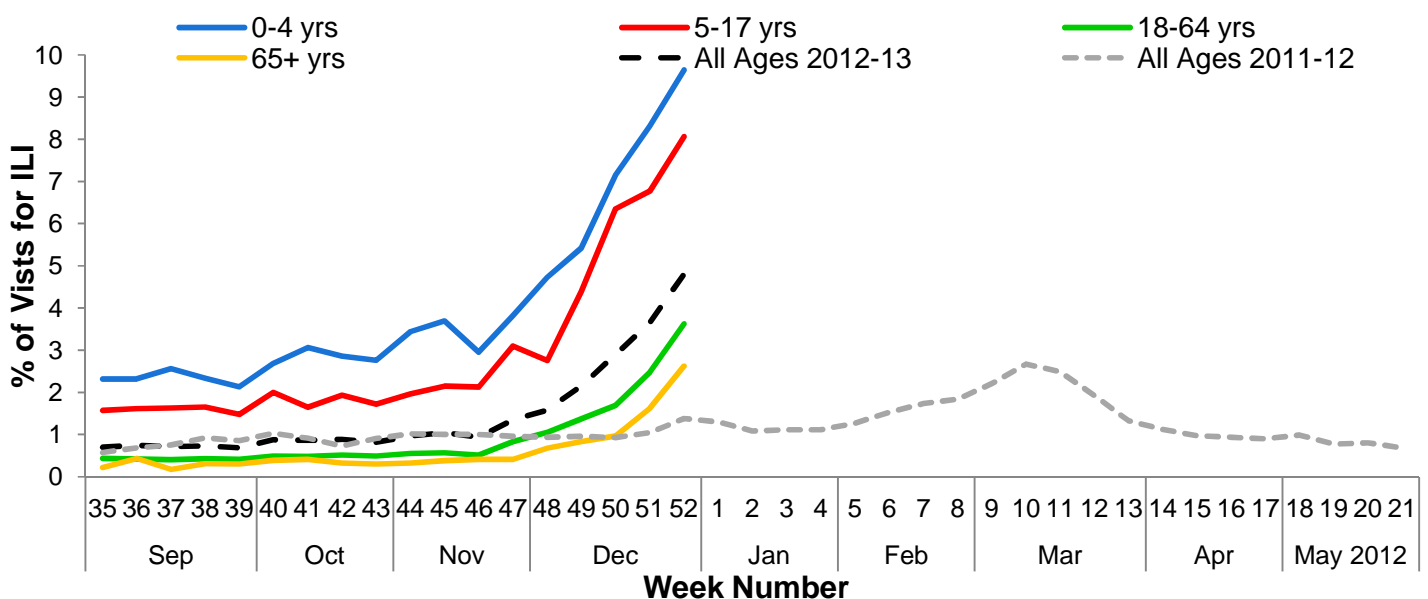
### I. Influenza Summary to Date

Influenza surveillance for suburban Cook County\*\* involves the weekly collection of data from a sample of hospitals, private physician's offices, and laboratory data. Influenza-like illness (ILI) is currently increasing. Our sentinel participants reported the following aggregate measures: Syndromic Surveillance: 4.31% ILI<sup>1</sup>, Sentinel Sites: 6.76%. Five hundred thirty-five specimens (40.3%) tested by participating laboratories were positive for influenza (327 influenza A H3N2, 198 influenza A unsubtype, and 10 influenza B). Since Week 35 (8/26/2012), suburban Cook County has had fifty-nine cases of influenza-associated intensive care unit (ICU) hospitalizations. During week 52, seventeen ICU hospitalizations due to influenza infection were reported to CCDPH. Thanks to all of our surveillance partners for their help in collecting this information.

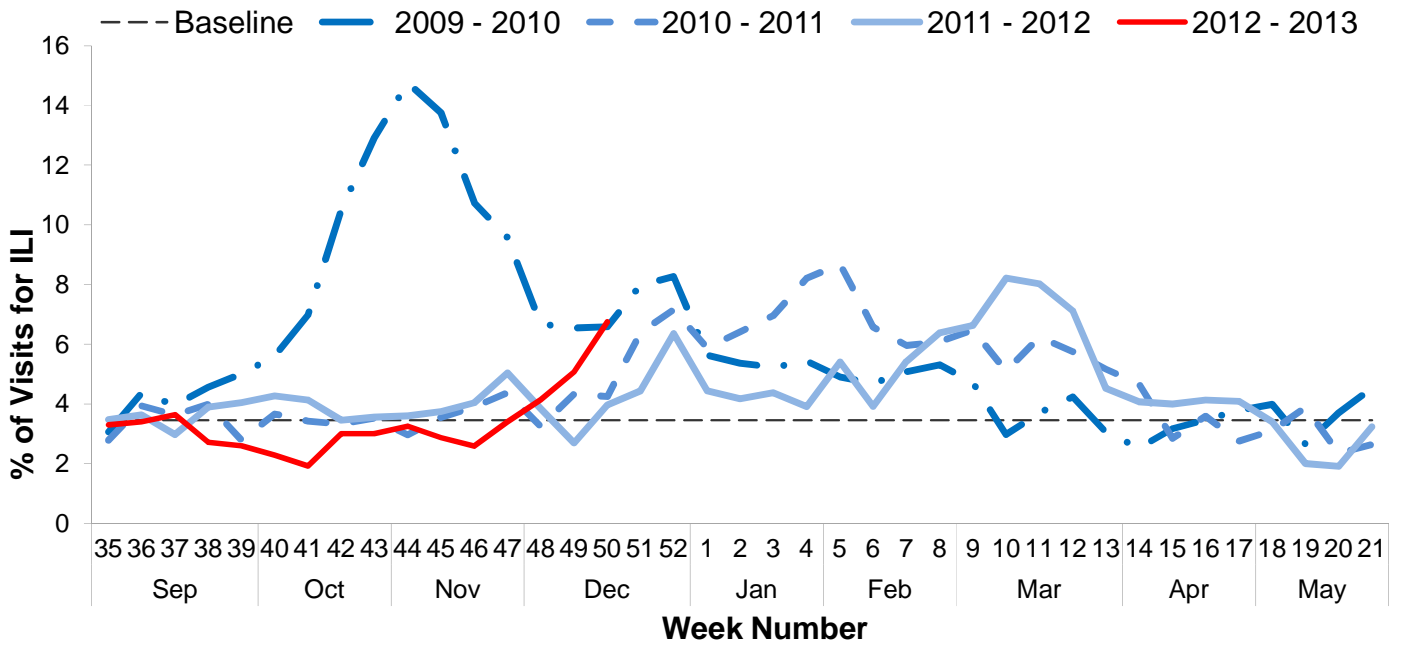
### II. Syndromic Surveillance Data<sup>1</sup>



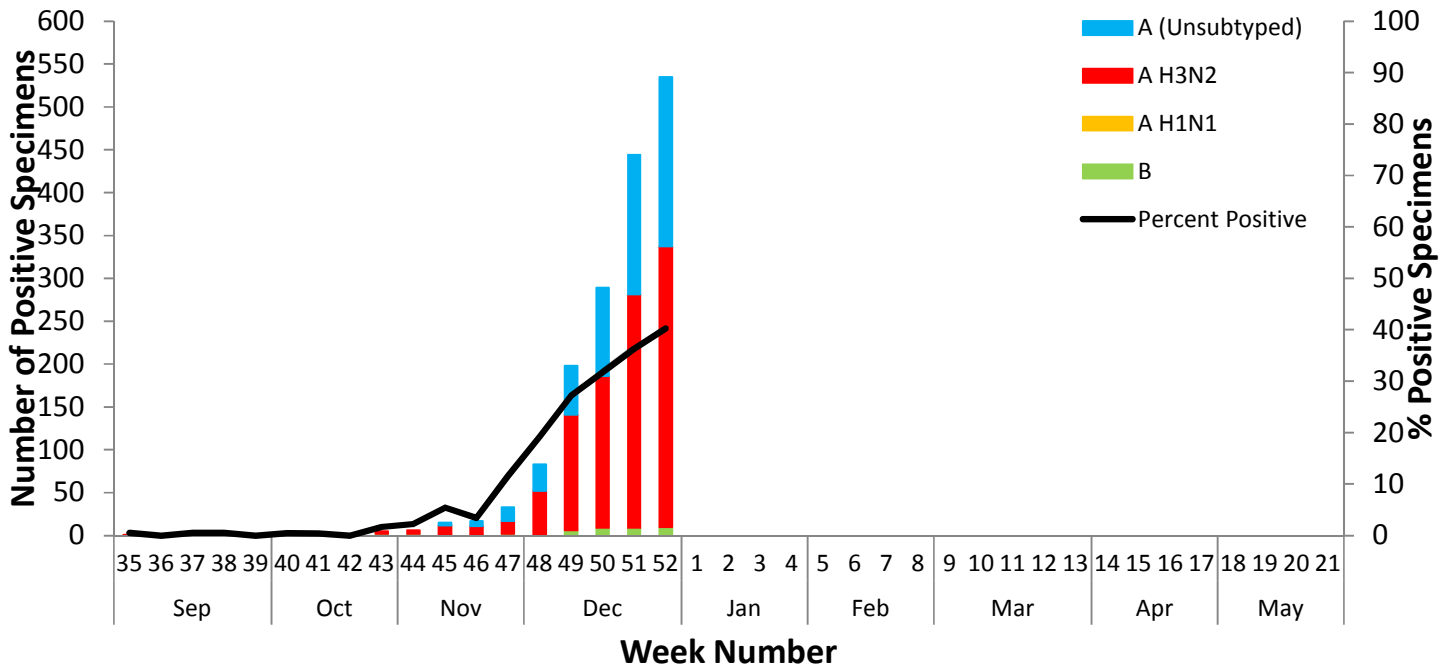
### III. Syndromic Surveillance by Age Group Data<sup>1</sup>



#### IV. Sentinel Provider Data<sup>2</sup>

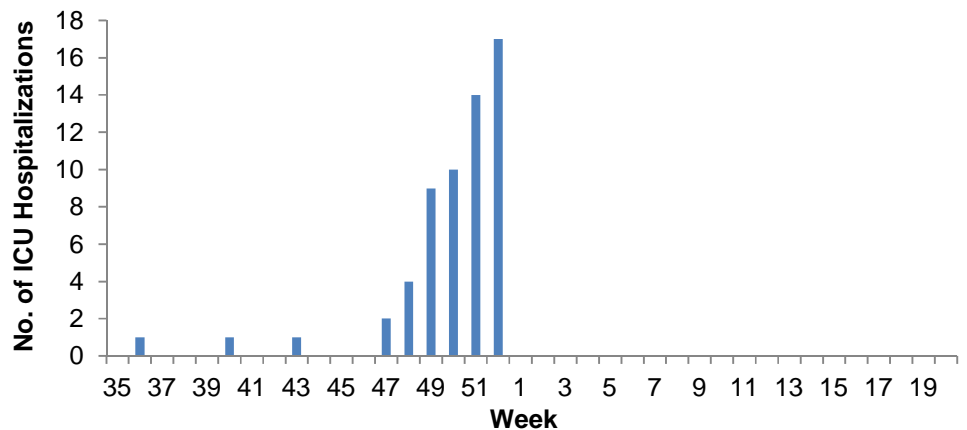


#### V. Laboratory Surveillance Data<sup>3</sup>

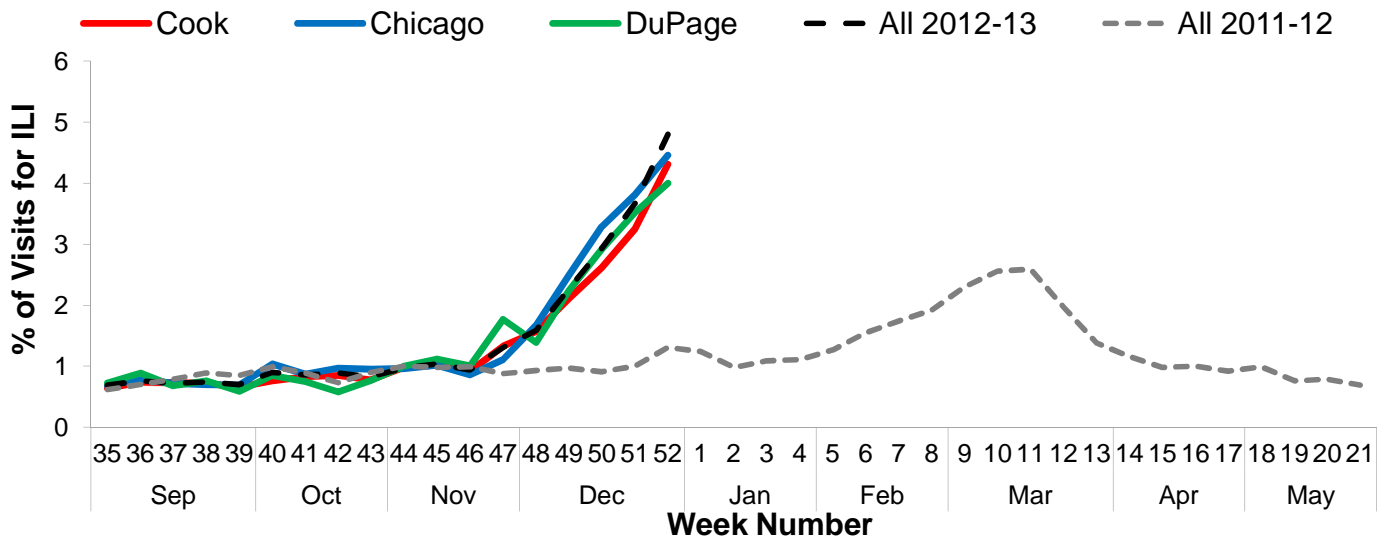


#### VI. ICU Hospitalization Data<sup>4</sup>

Hospitalized Case Counts	#
Total Cases	59
Incidence by Age	#
0-4	4
5-24	4
25-49	6
50-64	7
65+	37
Incidence by Region	#
North	26
West	10
Southwest	14
South	9



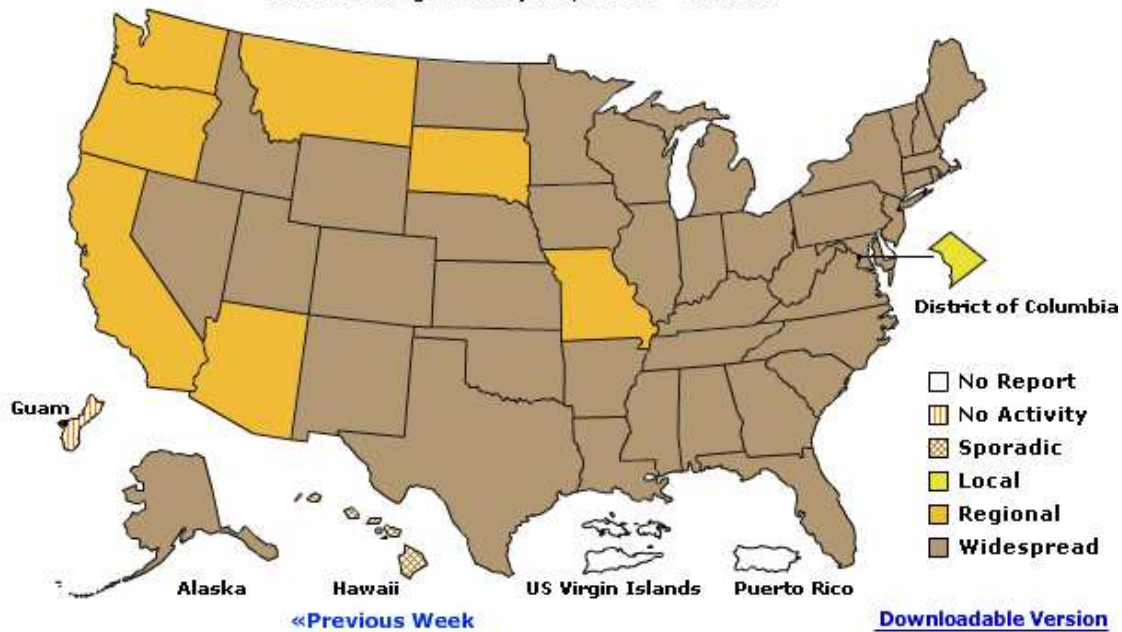
## VII. Regional Data



## VIII. United States Data<sup>†</sup>

A Weekly Influenza Surveillance Report Prepared by the Influenza Division  
Weekly Influenza Activity Estimates Reported by State and Territorial Epidemiologists\*

Week Ending January 04, 2014- Week 52



\*This map indicates geographic spread and does not measure the severity of influenza activity.

(All data are preliminary and may change as more reports are received.)

For further information about influenza activity see: [City of Chicago Surveillance Report](#), [IDPH Surveillance Report](#), [CDC Surveillance Report](#), [Distribute National Surveillance](#).

1. Syndromic surveillance influenza-like-illness (ILI) syndrome is defined as a symptom complex fever and cough or sore throat from ESSENCE. 32 hospital EDs participate in ESSENCE.  $ILI = \# \text{ of ED visits for ILI} / \text{total} \# \text{ of ED visits}$ .
2. ILI is defined as fever  $\geq 100^{\circ}F$ , cough and/or sore throat in the absence of a known cause other than influenza. 5 hospital EDs and 8 physician offices are participating CDC sentinel sites.
3. Laboratory surveillance includes viral culture, RT-PCR, and the rapid antigen test. Not all cases are suburban Cook County Residents. Participating laboratories: IDPH, NSUHS, and ACL.
4. Hospitalization and death data are only for suburban Cook County residents (excludes Evanston, Skokie, Oak Park, and Stickney). Data includes reported cases for the presented week.
5. <http://www.cdc.gov/flu/weekly/index.htm>

<sup>†</sup> **No activity:** no laboratory confirmed cases of influenza and no reported increase in cases of ILI.

**Sporadic:** small number of laboratory confirmed influenza cases or a single laboratory confirmed influenza in a single region of the state.

**Local:** Outbreaks of influenza or increases in ILI and recent laboratory confirmed influenza in a single region of the state.

**Regional:** Outbreaks of influenza or increases in ILI and recent laboratory confirmed influenza in at least two but less than half the region of the state.

**Widespread:** Outbreaks of influenza or increases in ILI cases and recent laboratory confirmed influenza in at least half the region in the state.