

COOK COUNTY DEPARTMENT OF PUBLIC HEALTH

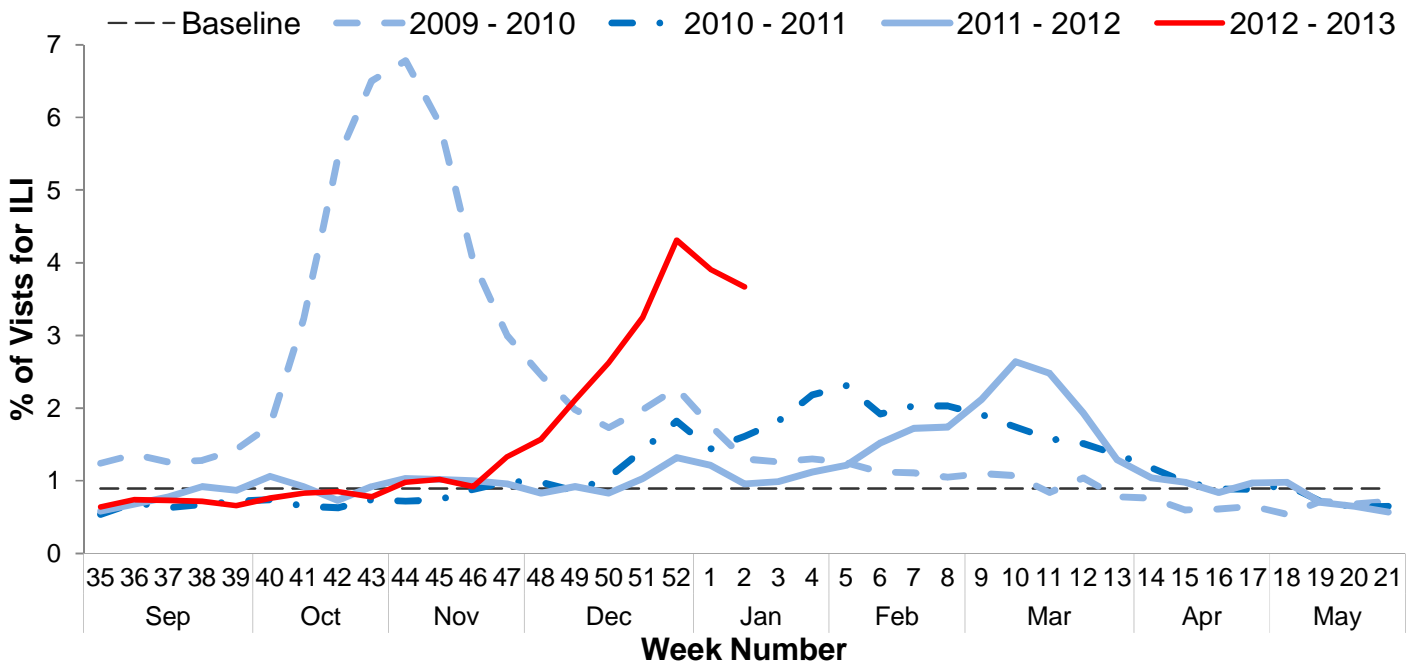


Influenza Surveillance Report Week 2: January 6 - 12, 2013

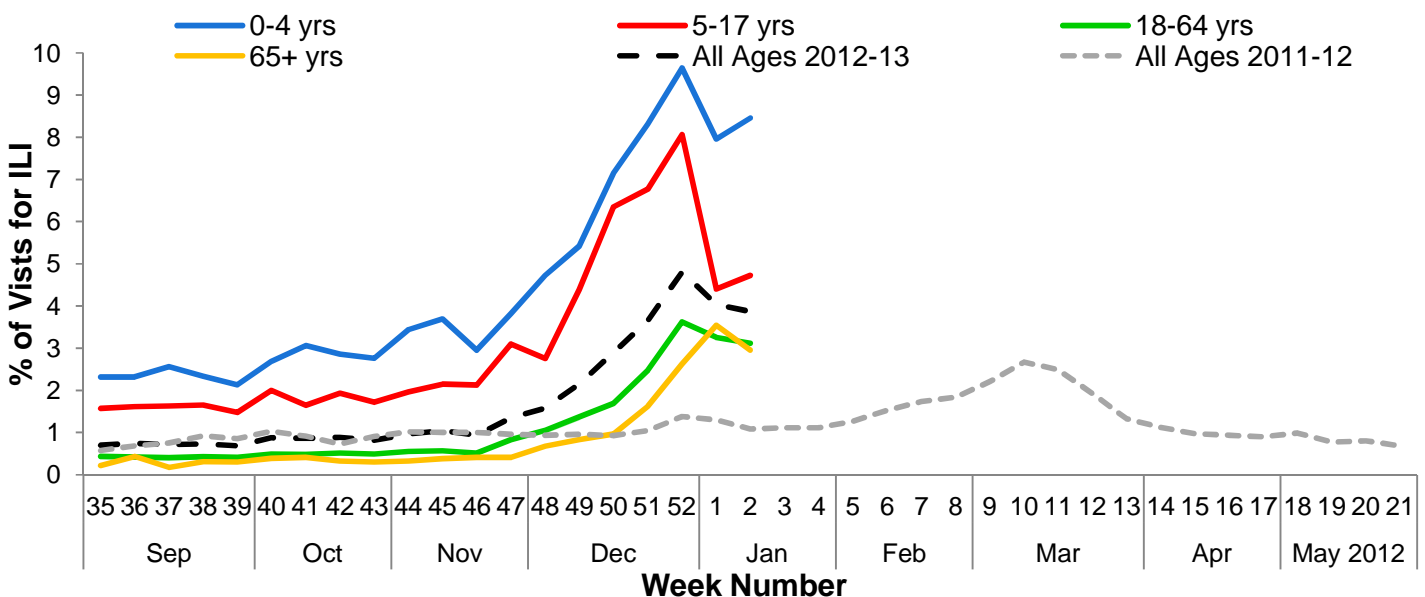
I. Influenza Summary to Date

Influenza surveillance for suburban Cook County** involves the weekly collection of data from a sample of hospitals, private physician's offices, and laboratory data. Surveillance data suggest that influenza-like-activity (ILI) is currently high. Our sentinel participants reported the following aggregate measures: Syndromic Surveillance: 3.67% ILI¹, Sentinel Sites: 6.53%. Five hundred specimens (30.6%) tested by participating laboratories were positive for influenza (291 influenza A H3N2, 187 influenza A unsubtype, 1 influenza A H1N1, and 21 influenza B). Since Week 35 (8/26/2012), suburban Cook County has had one hundred twenty-three cases of influenza-associated intensive care unit (ICU) hospitalizations. Twenty-eight ICU hospitalizations due to influenza infection had onsets during week 2. Thanks to all of our surveillance partners for their help in collecting this information.

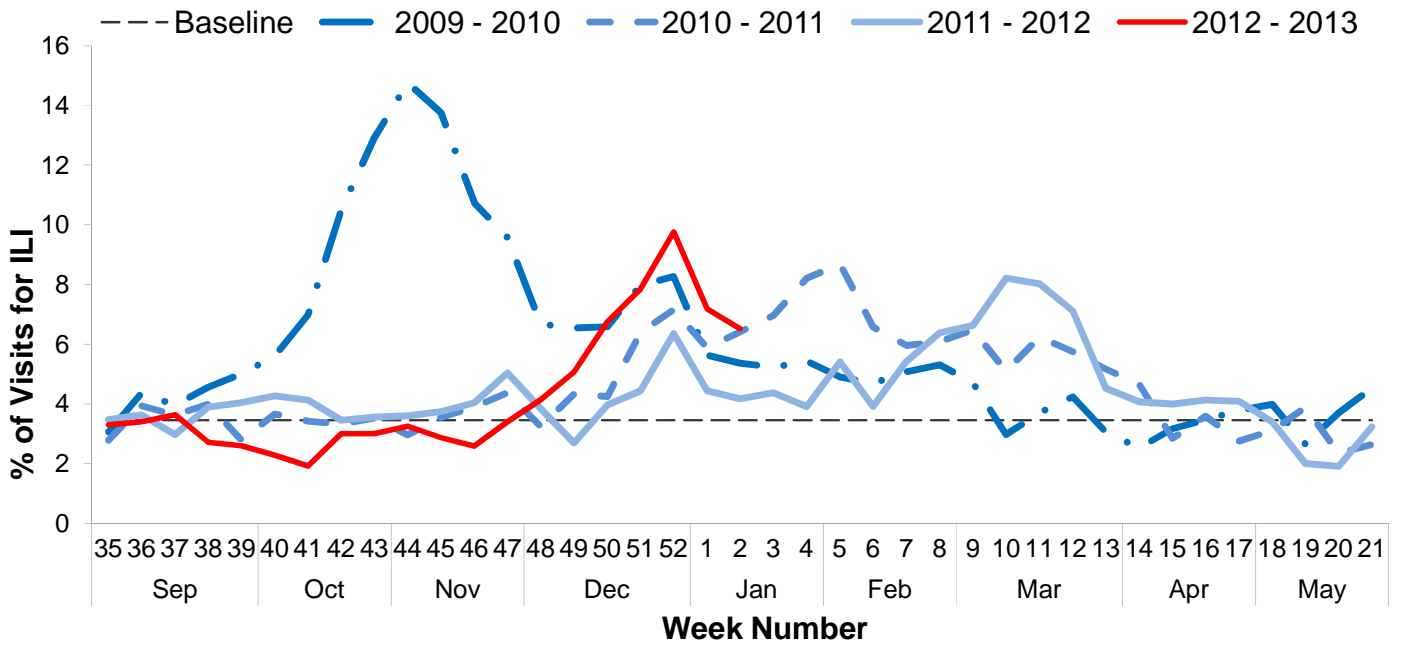
II. Syndromic Surveillance Data¹



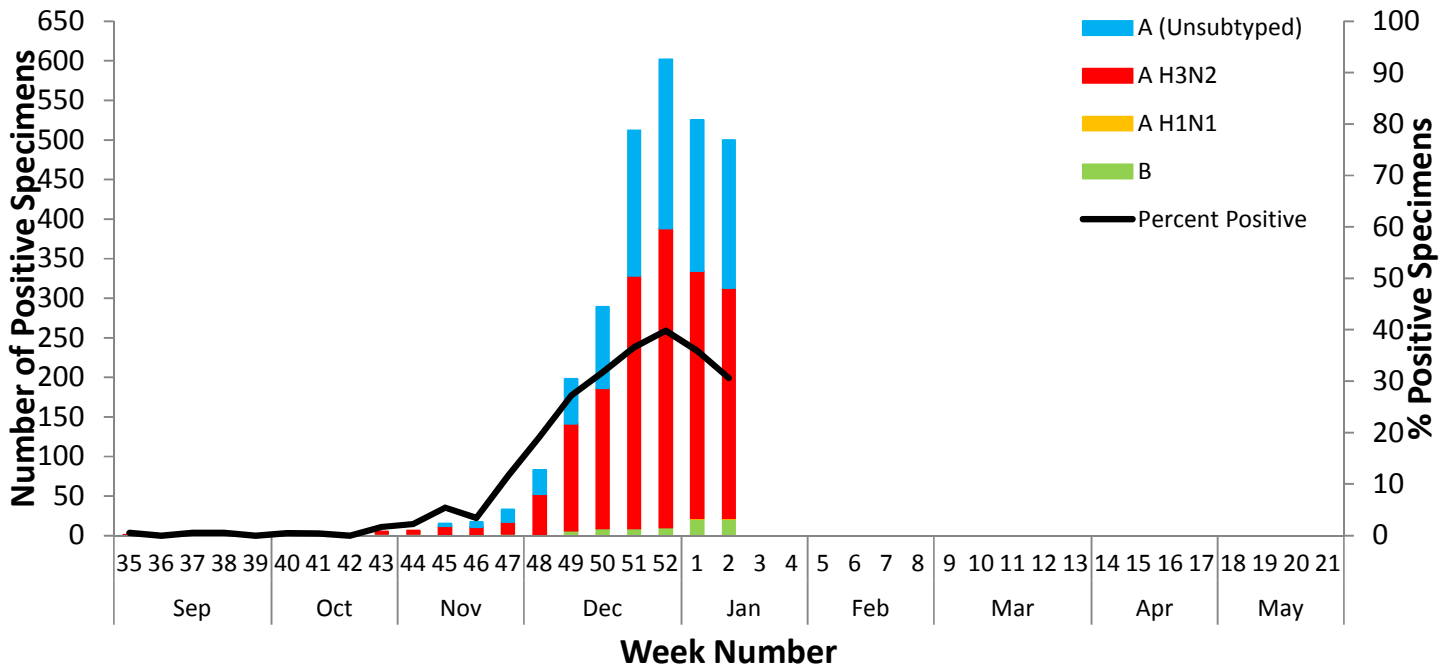
III. Syndromic Surveillance by Age Group Data¹



IV. Sentinel Provider Data²

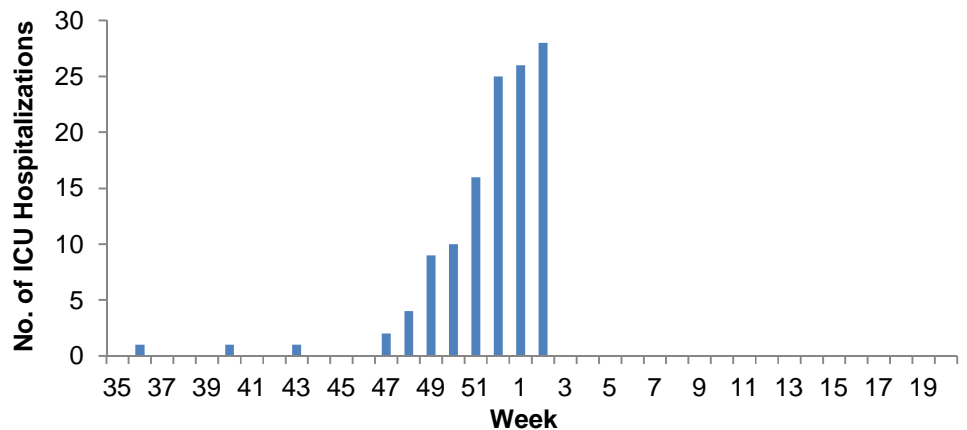


V. Laboratory Surveillance Data³

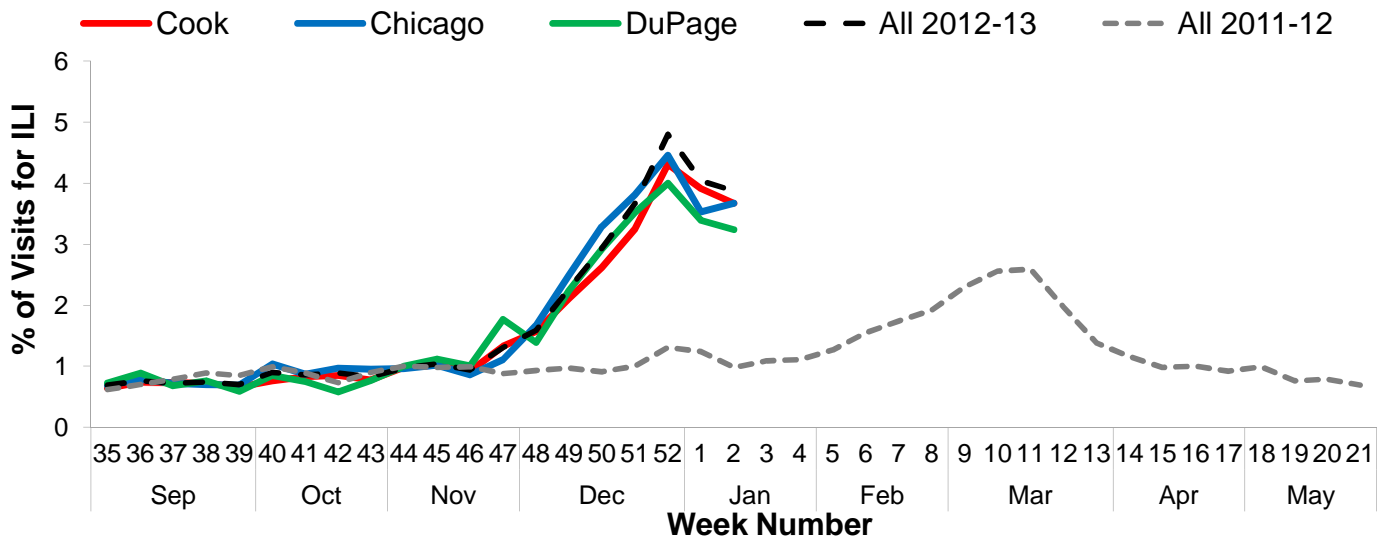


VI. ICU Hospitalization Data⁴

Hospitalized Case Counts		#
Total Cases		123
Incidence by Age		#
0-4		6
5-24		6
25-49		8
50-64		16
65+		87
Incidence by Region		#
North		61
West		14
Southwest		21
South		27



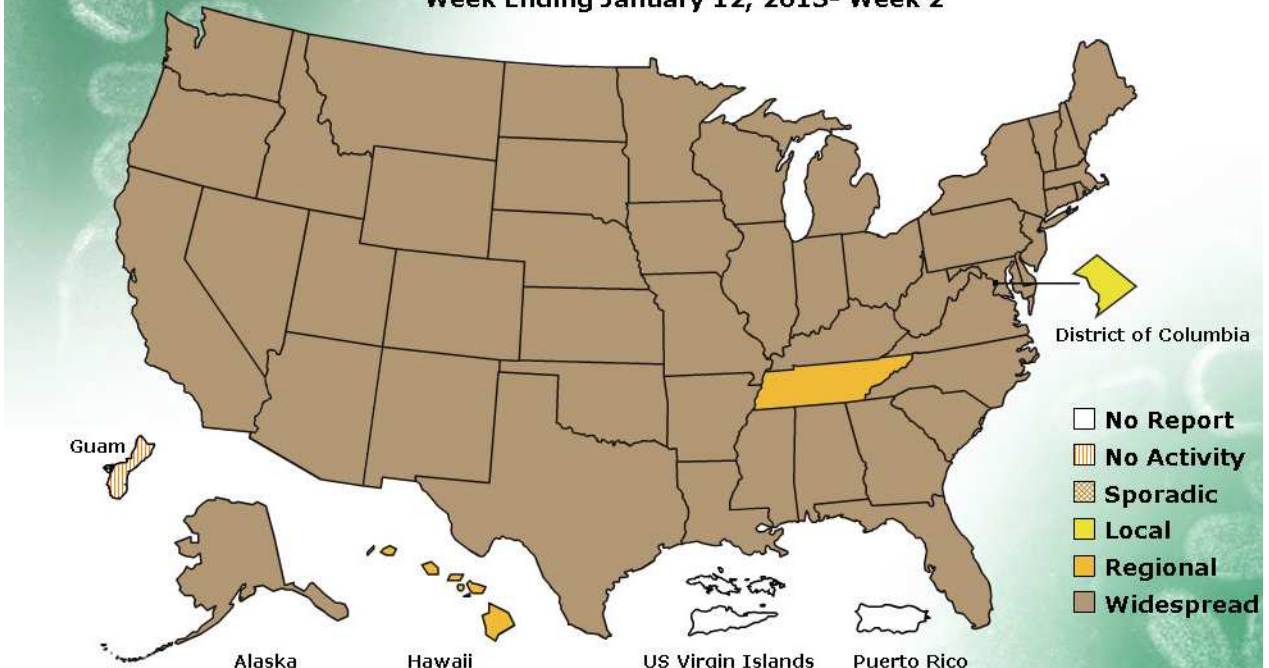
VII. Regional Data



VIII. United States Data[†]

A Weekly Influenza Surveillance Report Prepared by the Influenza Division
Weekly Influenza Activity Estimates Reported by State and Territorial Epidemiologists*

Week Ending January 12, 2013- Week 2



(All data are preliminary and may change as more reports are received.)

For further information about influenza activity see: [City of Chicago Surveillance Report](#), [IDPH Surveillance Report](#), [CDC Surveillance Report](#), [Distribute National Surveillance](#).

1. Syndromic surveillance influenza-like-illness (ILI) syndrome is defined as a symptom complex fever and cough or sore throat from ESSENCE. 32 hospital EDs participate in ESSENCE. $ILI = \# \text{ of ED visits for ILI} / \text{total} \# \text{ of ED visits}$.
2. ILI is defined as fever $\geq 100^{\circ}F$, cough and/or sore throat in the absence of a known cause other than influenza. 5 hospital EDs and 8 physician offices are participating CDC sentinel sites.
3. Laboratory surveillance includes viral culture, RT-PCR, and the rapid antigen test. Not all cases are suburban Cook County Residents. Participating laboratories: IDPH, NSUHS, and ACL.
4. Hospitalization and death data are only for suburban Cook County residents (excludes Evanston, Skokie, Oak Park, and Stickney). Data includes reported cases for the presented week.
5. <http://www.cdc.gov/flu/weekly/index.htm>

[†] **No activity:** no laboratory confirmed cases of influenza and no reported increase in cases of ILI.

Sporadic: small number of laboratory confirmed influenza cases or a single laboratory confirmed influenza in a single region of the state.

Local: Outbreaks of influenza or increases in ILI and recent laboratory confirmed influenza in a single region of the state.

Regional: Outbreaks of influenza or increases in ILI and recent laboratory confirmed influenza in at least two but less than half the region of the state.

Widespread: Outbreaks of influenza or increases in ILI cases and recent laboratory confirmed influenza in at least half the region in the state.