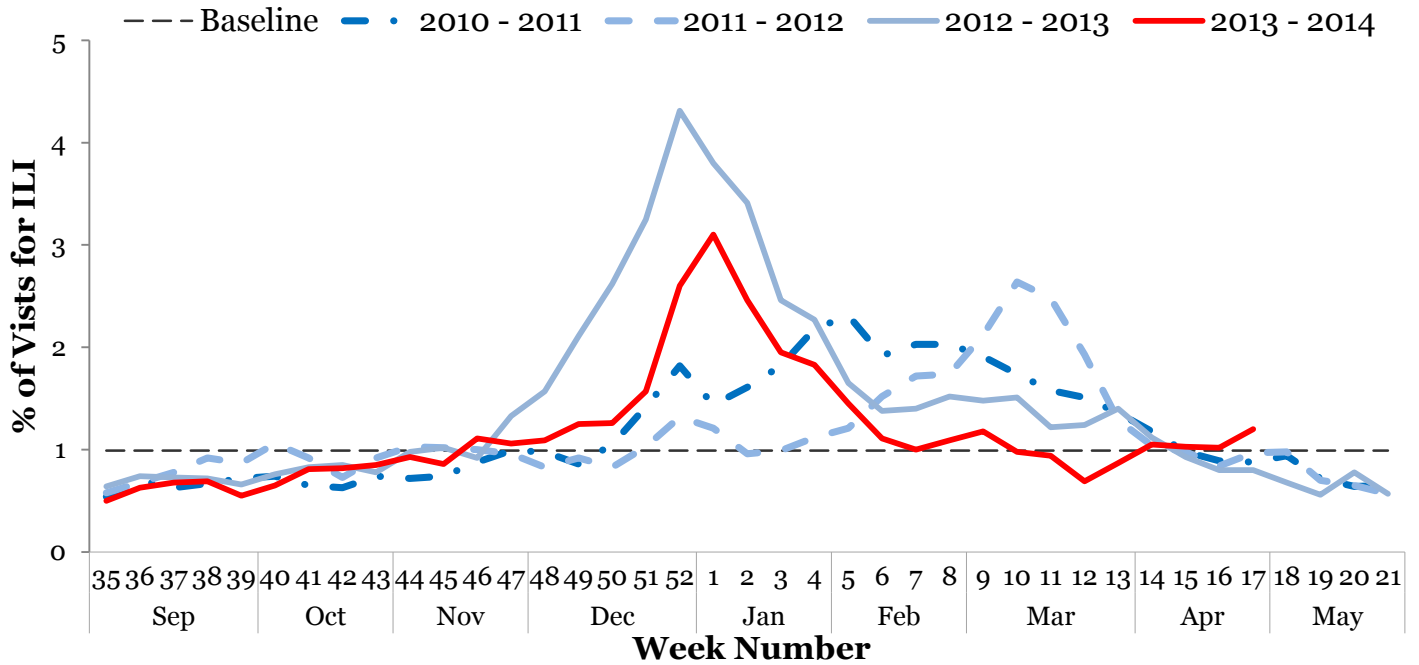




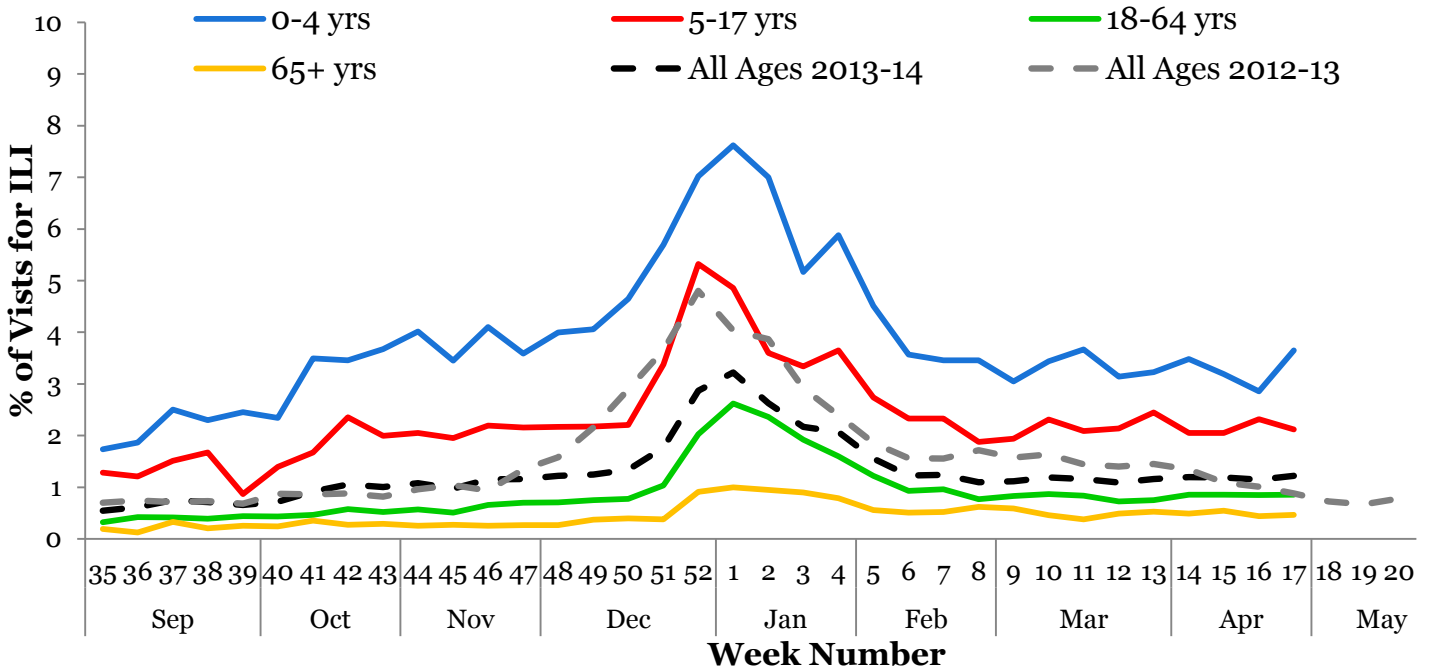
**I. Influenza Summary to Date**

Influenza surveillance for suburban Cook County\*\* involves the weekly collection of data from a sample of hospitals, private physician’s offices, and laboratory data. Influenza activity is currently low. Our sentinel participants reported the following aggregate measures: Syndromic Surveillance: 1.2% ILI<sup>1</sup>, Sentinel Surveillance: 2.32% ILI<sup>2</sup>. 29 specimens tested positive for influenza (1 influenza A H<sub>3</sub>N<sub>2</sub> and 28 influenza B). Since Week 35 (8/25/2013), suburban Cook County has had 199 cases of influenza-associated intensive care unit (ICU) hospitalizations. During week 17, 1 ICU hospitalization due to influenza infection was reported to CCDPH. Thank you to all of our surveillance partners for their help in collecting this information.

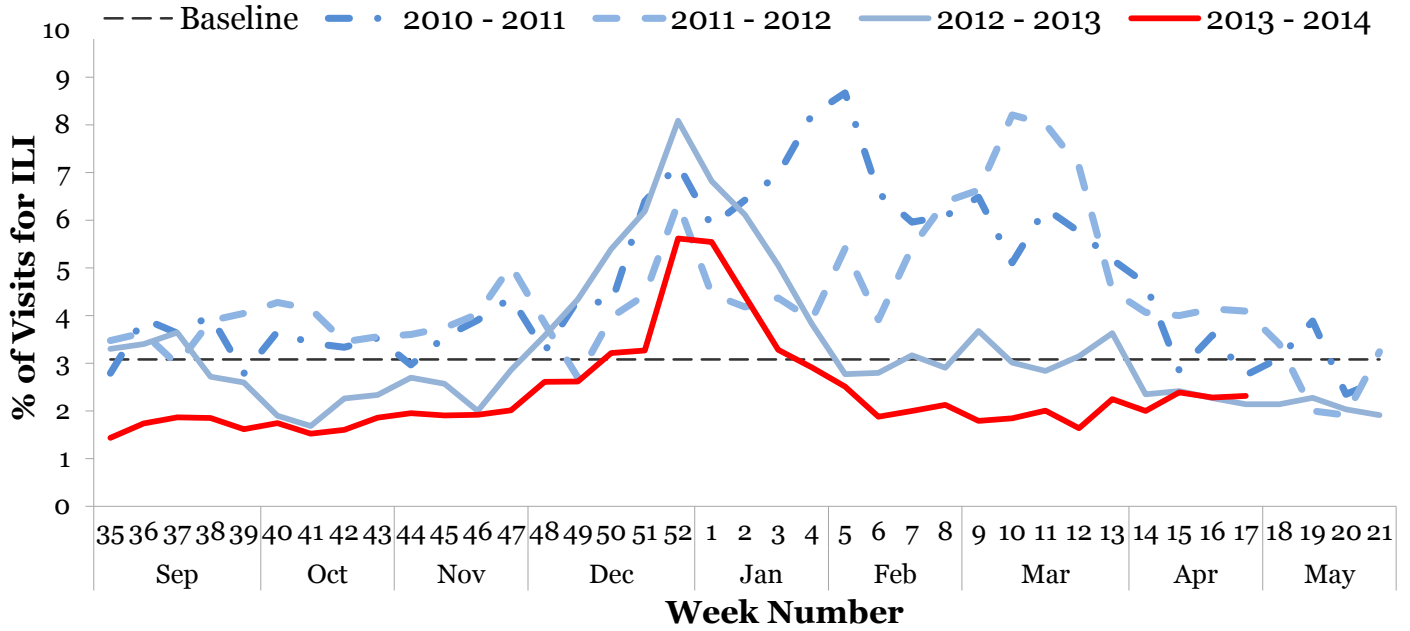
**II. Syndromic Surveillance Data<sup>1</sup>**



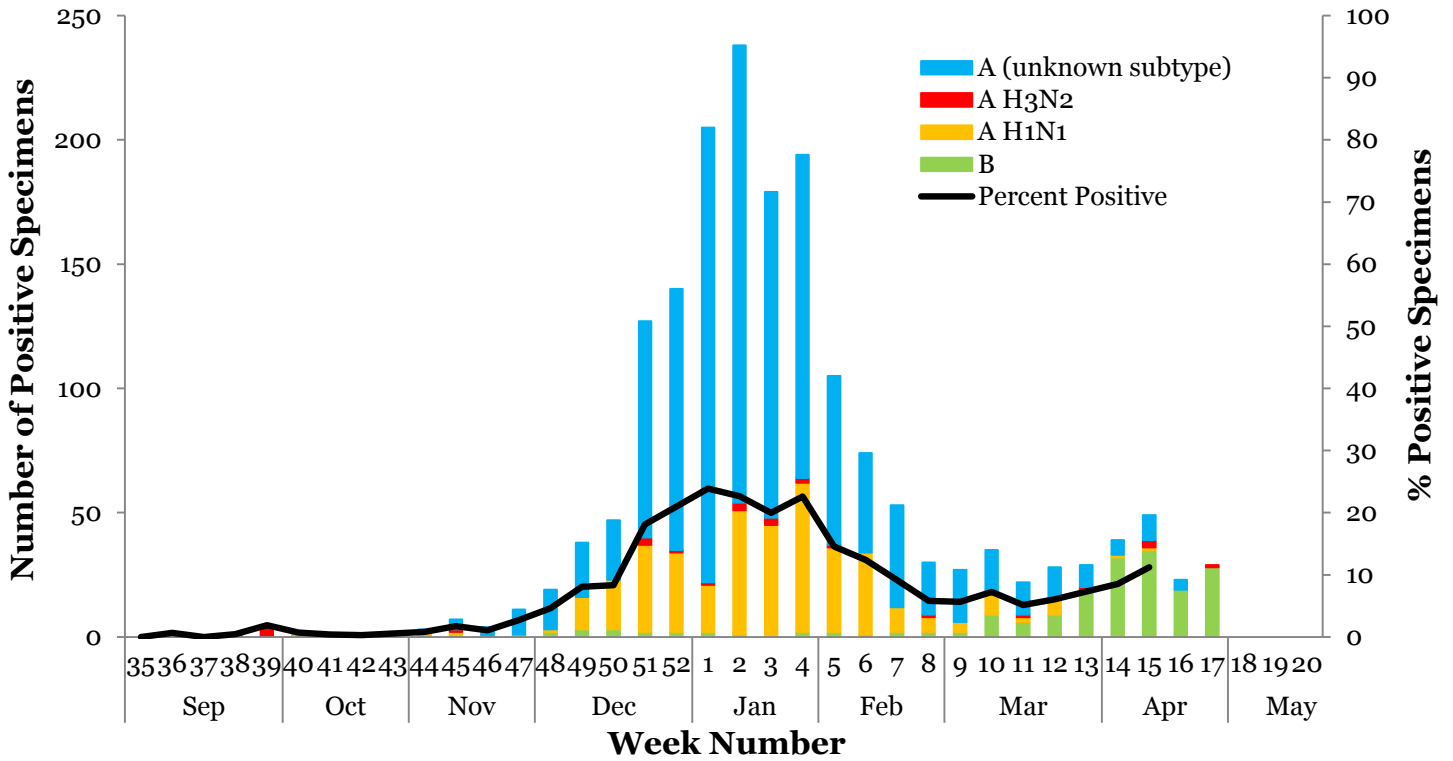
**III. Syndromic Surveillance by Age Group Data<sup>1</sup>**



**IV. Sentinel Provider Data<sup>2</sup>**

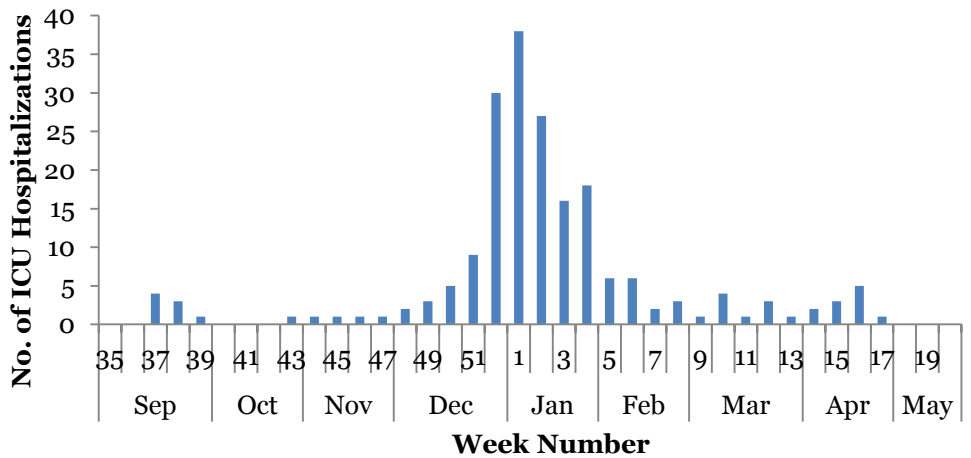


**V. Laboratory Surveillance Data<sup>3</sup>**

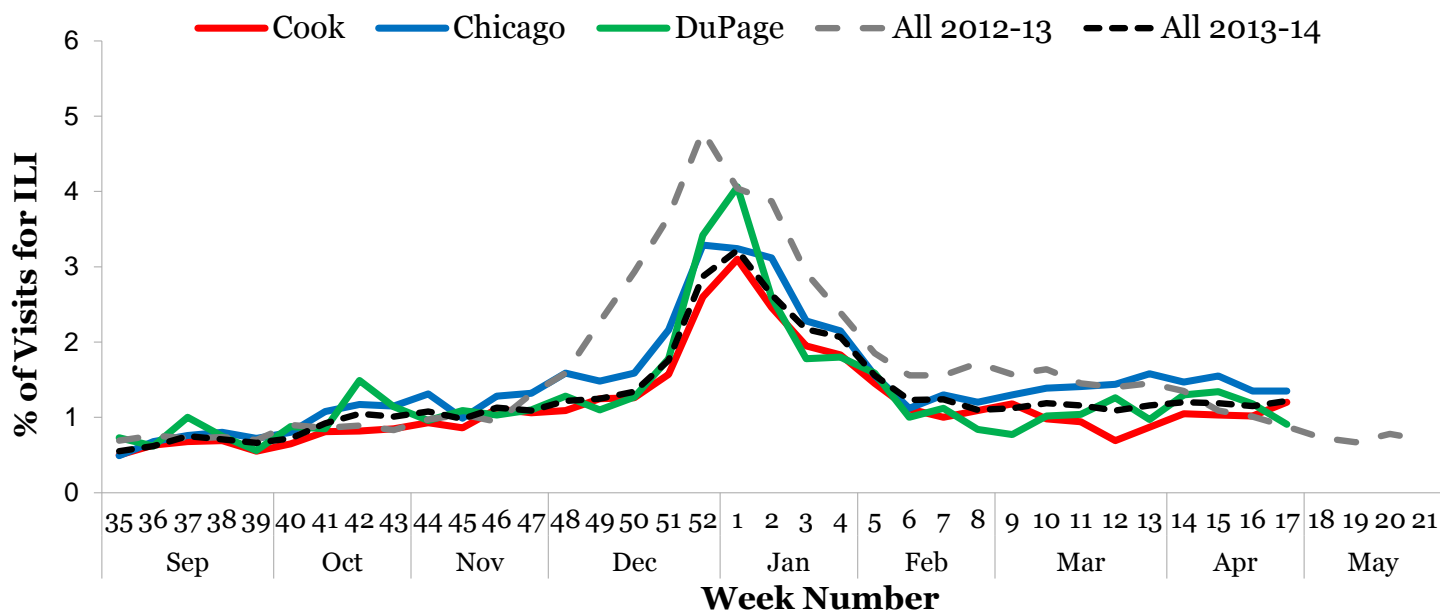


**VI. ICU Hospitalization Data<sup>4</sup>**

Hospitalized Case Counts		#
Total Cases		199
Incidence by Age		#
0-4		9
5-24		16
25-49		33
50-64		64
65+		73
Unknown		4
Incidence by Region		#
North		67
West		39
Southwest		27
South		66

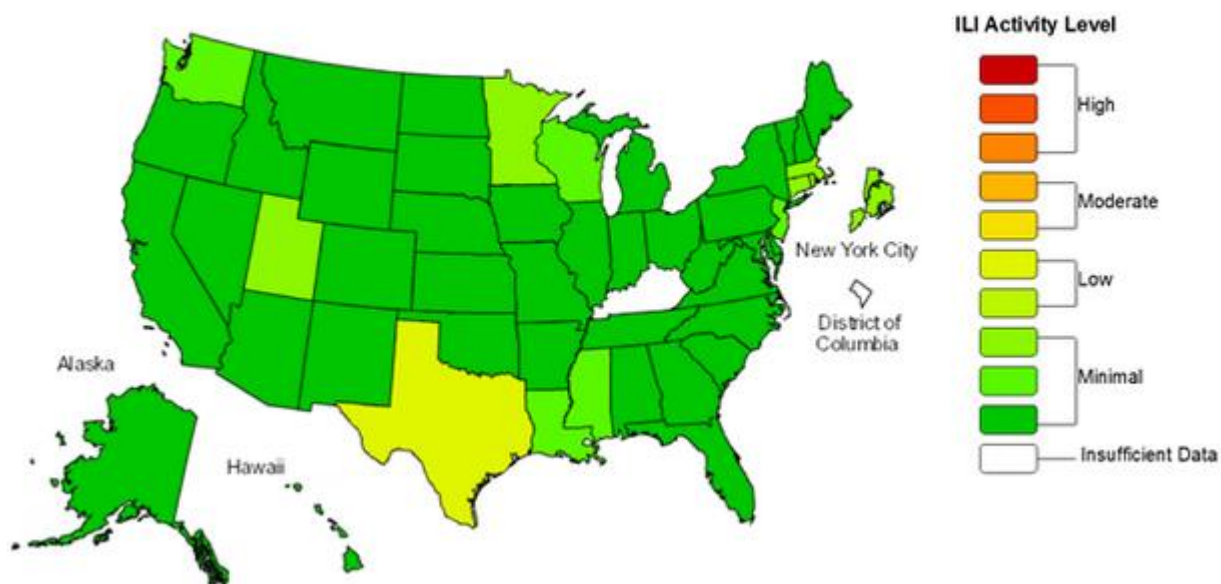


## VII. Regional Data



## VIII. United States Data<sup>†</sup>

**Influenza-Like Illness (ILI) Activity Level Indicator Determined by Data Reported to ILINet  
2013-14 Influenza Season Week 17 ending Apr 26, 2014**



(All data are preliminary and may change as more reports are received.)

For further information about influenza activity see: [City of Chicago Surveillance Report](#), [IDPH Surveillance Report](#), [CDC Surveillance Report](#), [Distribute National Surveillance](#).

1. Syndromic surveillance influenza-like-illness (ILI) syndrome is defined as a symptom complex fever and cough or sore throat from ESSENCE. 45 hospital EDs participate in ESSENCE.  $ILI = \# \text{ of ED visits for ILI} / \text{total } \# \text{ of ED visits}$ .
2. ILI is defined as fever  $\geq 100^\circ\text{F}$ , cough and/or sore throat in the absence of a known cause other than influenza. 8 hospital EDs and 3 physician offices are participating CDC sentinel sites.
3. Laboratory surveillance includes viral culture, RT-PCR, and the rapid antigen test. Not all cases are suburban Cook County Residents. Participating laboratories: IDPH, NSUHS, and ACL.
4. Hospitalization and death data are only for suburban Cook County residents (excludes Evanston, Skokie, Oak Park, and Stickney). Data includes reported cases for the presented week.
5. <http://www.cdc.gov/flu/weekly/index.htm>

<sup>†</sup> This map uses the proportion of outpatient visits to health care providers for influenza-like illness to measure the ILI activity level within a state.