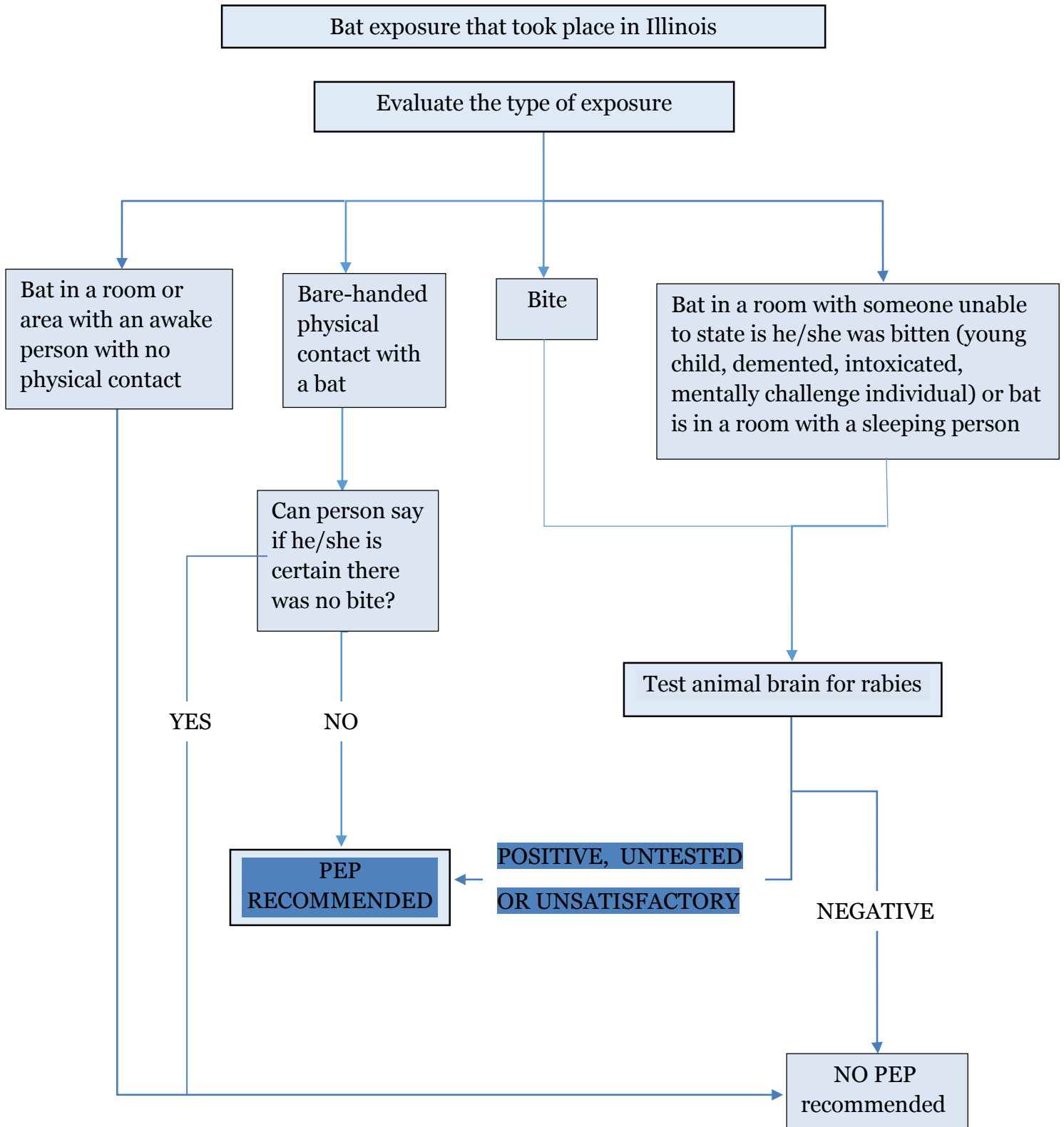




Animal exposure decision flowchart for rabies PEP



*CCDPH is available for rabies consultations 24/7; during business hours call 708-836-8699, after hours call 708-633-4000 and follow the prompts.

* If exposing animal is available for testing or confinement, contact CC Animal Control at 708-974-6140 during business hours. If possible, PEP should be delayed until testing or confinement is complete.