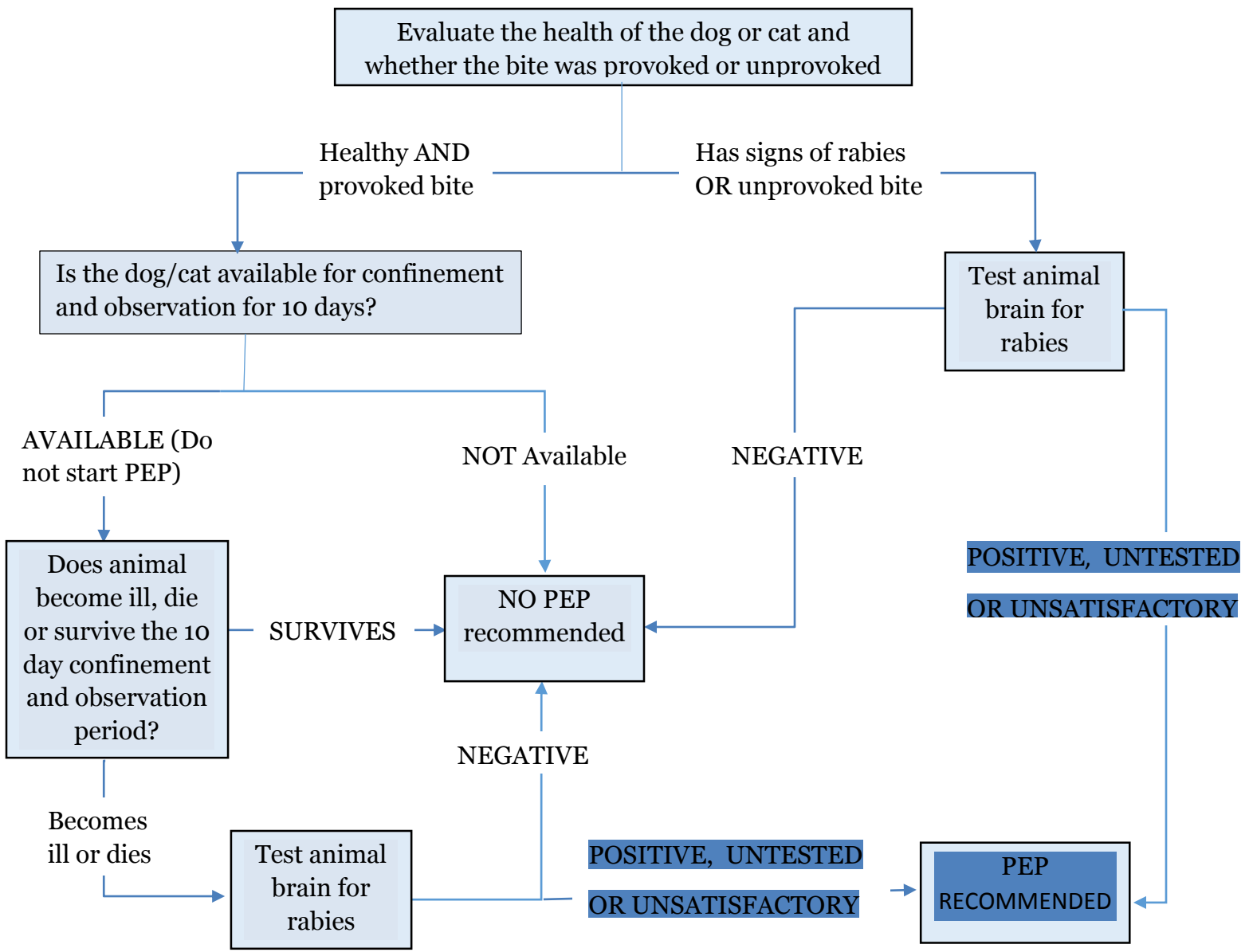




Dog or cat bite that took place in Illinois

**Provoked bite** – bite might be expected given the circumstances (e.g. separating 2 fighting animals, handling injured animal, handling unfamiliar animal, taking away an animal’s food, running or biking by the dog, entering a dog’s property). **Unprovoked bite** – bite would not be expected given the circumstances (e.g. person walking in the park and dog or cat runs up and bites). **Signs of rabies** – trouble walking, paralysis or weakness, excess salivation, neurologic problems or extreme aggressiveness.



\*CCDPH is available for rabies consultations 24/7; during business hours call 708-836-8699, after hours call 708-633-4000 and follow the prompts.

\* If exposing animal is available for testing or confinement, contact CC Animal Control at 708-974-6140 during business hours. If possible, PEP should be delayed until testing or confinement is complete.