

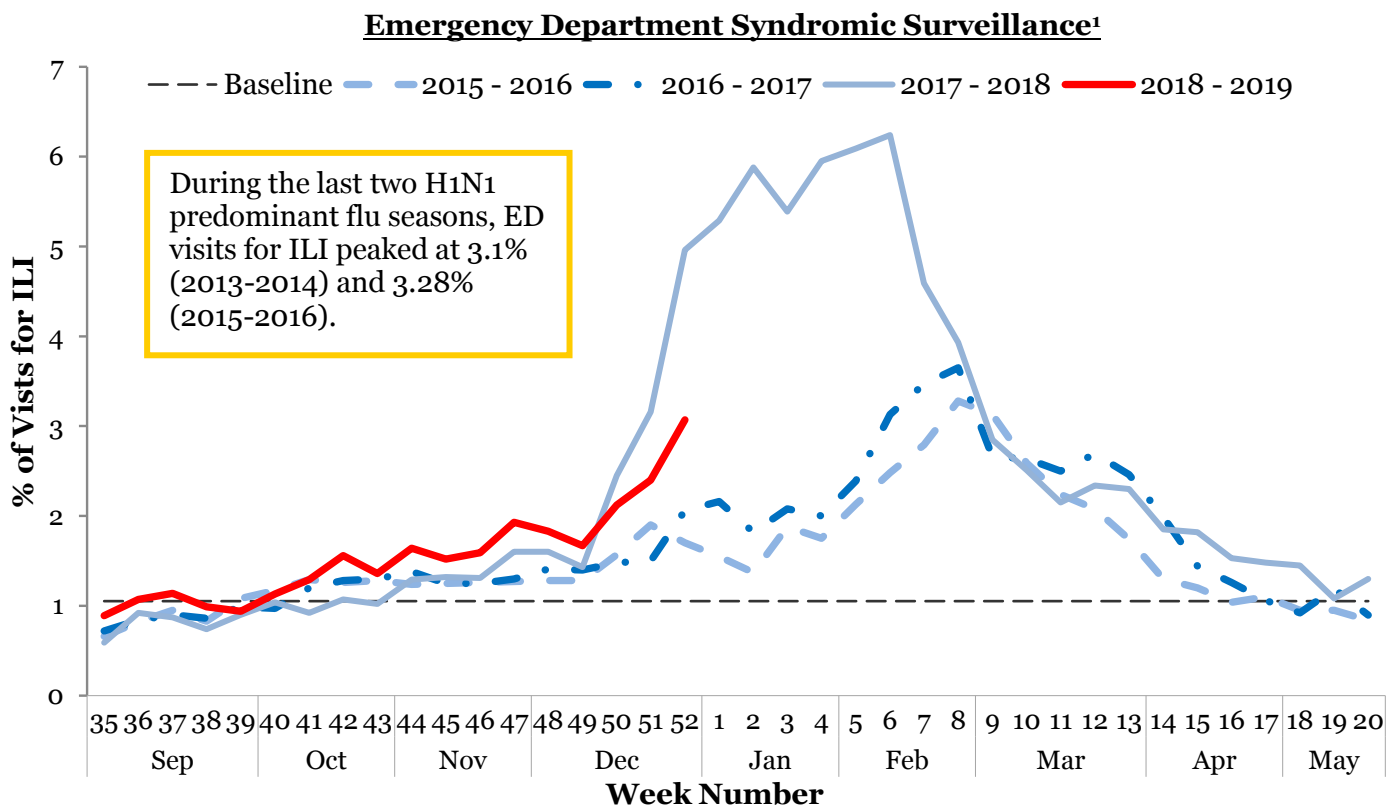


I. Influenza-like Illness (ILI) Weekly Summary

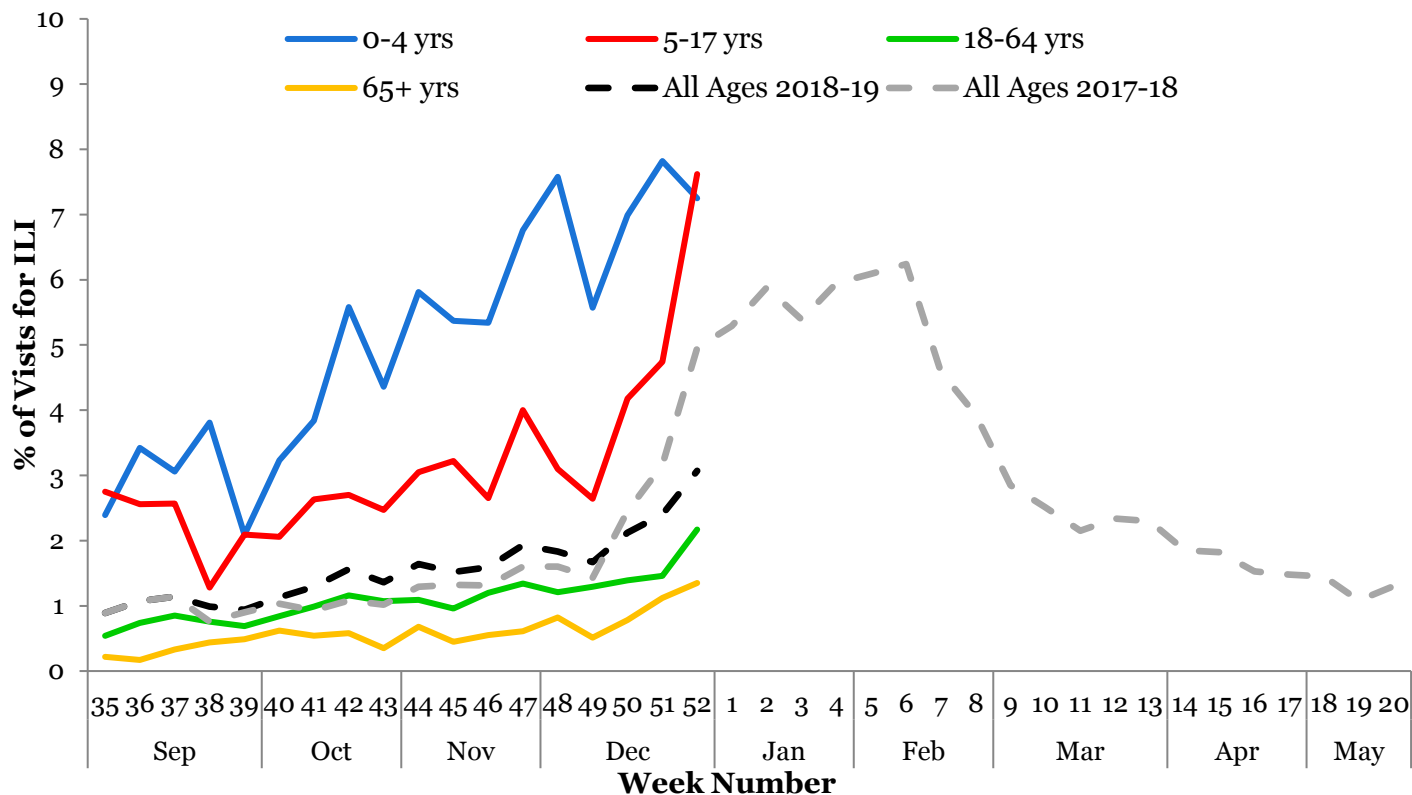
- Influenza activity is currently **increasing**. This risk assessment is based on:
 - The proportion of emergency department visits for ILI was 3.07%, above the regional baseline of 1.05%, and has been increasing for three weeks.
 - The proportion of outpatient provider visits for ILI was 2.15%, above the regional baseline of 0.73%, and has been increasing for three weeks.
 - The proportion of deaths associated with pneumonia or influenza was 4.65%, below the epidemic threshold of 6.57%.
- Two hundred seventy-eight (9.24%) laboratory specimens tested positive for influenza: 21 influenza A H1N1, 7 influenza A H3N2, 239 influenza A unknown subtype, and 11 influenza B.
- Eight influenza-associated intensive care unit (ICU) hospitalizations were reported during Week 52. Twenty-two ICU hospitalizations have been reported since Week 35.
- Since Week 35, 0 influenza-associated pediatric deaths, 0 clusters of ILI in schools, and 1 outbreak of influenza in a long-term care facility have been reported.
- **Current recommendations** for flu prevention and control are to promote influenza vaccination and [respiratory hygiene](#). Offer masks to symptomatic individuals with cough.

Note: Surveillance for ILI in suburban Cook County involves the weekly collection of data from hospitals, physicians' offices, and laboratories. Thank you to all of our surveillance partners for their help in collecting this information.

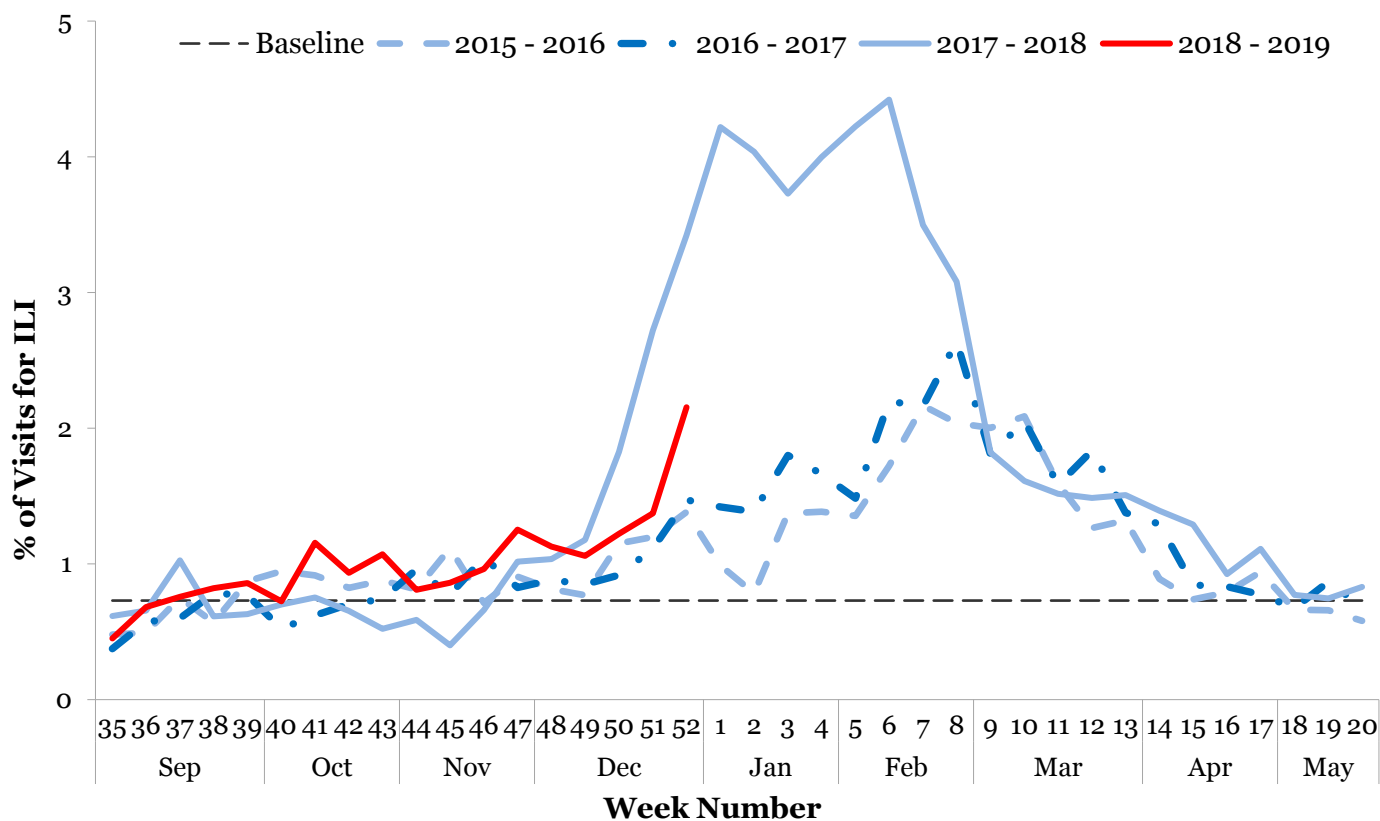
II. Influenza Activity Level / Disease Burden



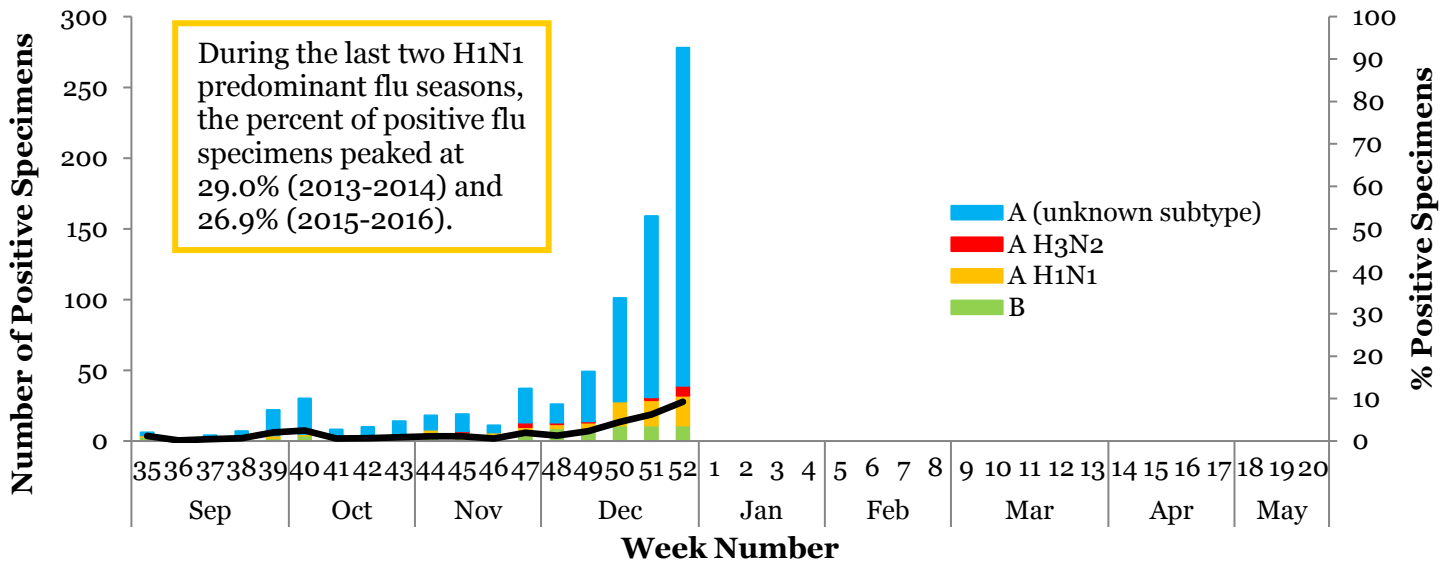
Syndromic Surveillance by Age Group¹



Outpatient Sentinel Providers²



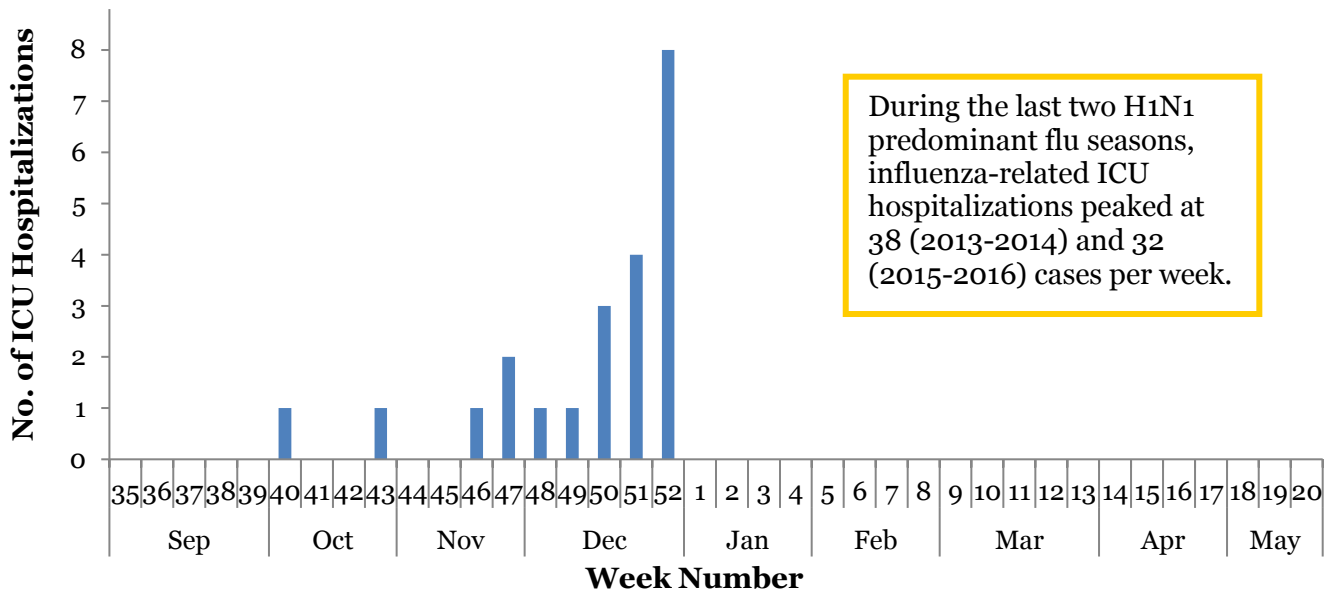
III. Circulating Strains³



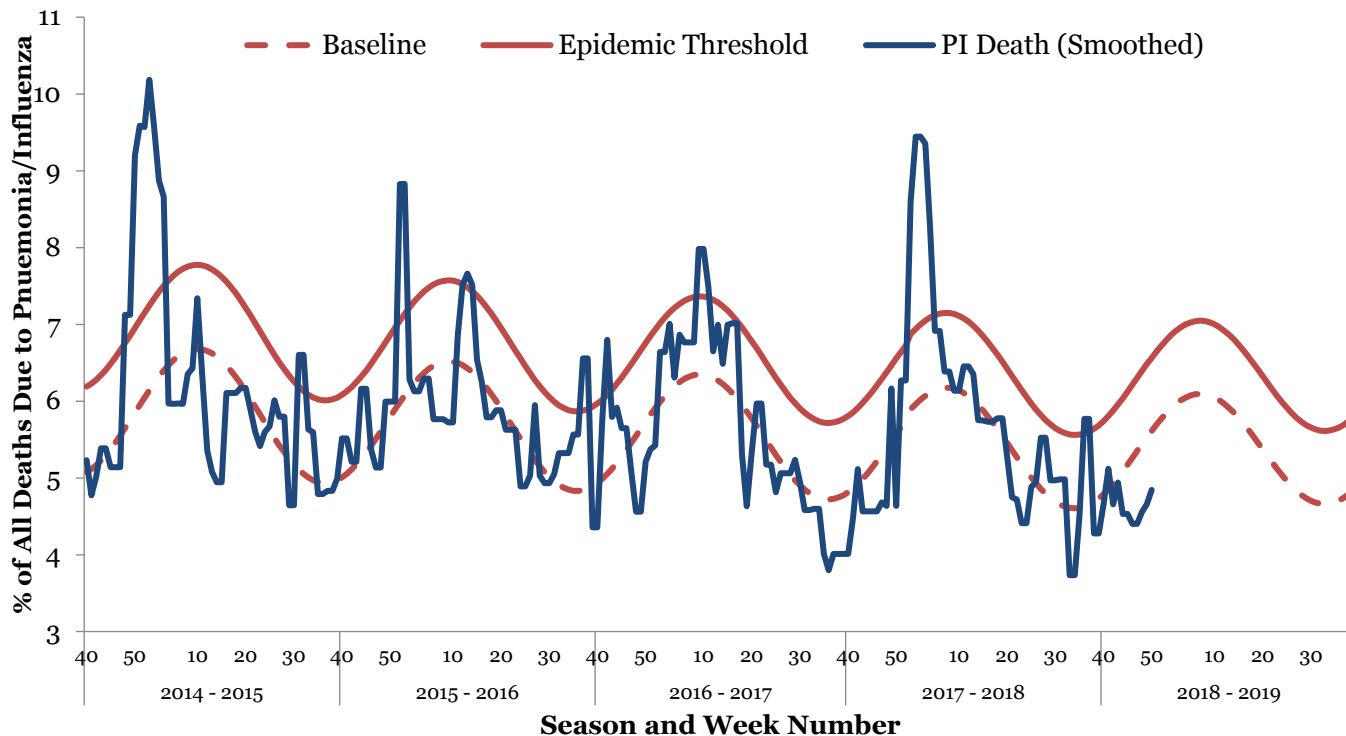
IV. Seasonal Severity

ICU Hospitalizations⁴

Cumulative Case Count	#	Incidence Rate	Per 100,000
Total Cases	22		0.97
Incidence Rate by Age		Incidence Rate by Region	
0-4	2.09	North	0.86
5-24	0.17	West	1.19
25-49	0.79	Southwest	0.55
50-64	1.10	South	1.27
65+	2.25		



Pneumonia and Influenza Mortality⁵



V. Regional Flu Activity¹

