



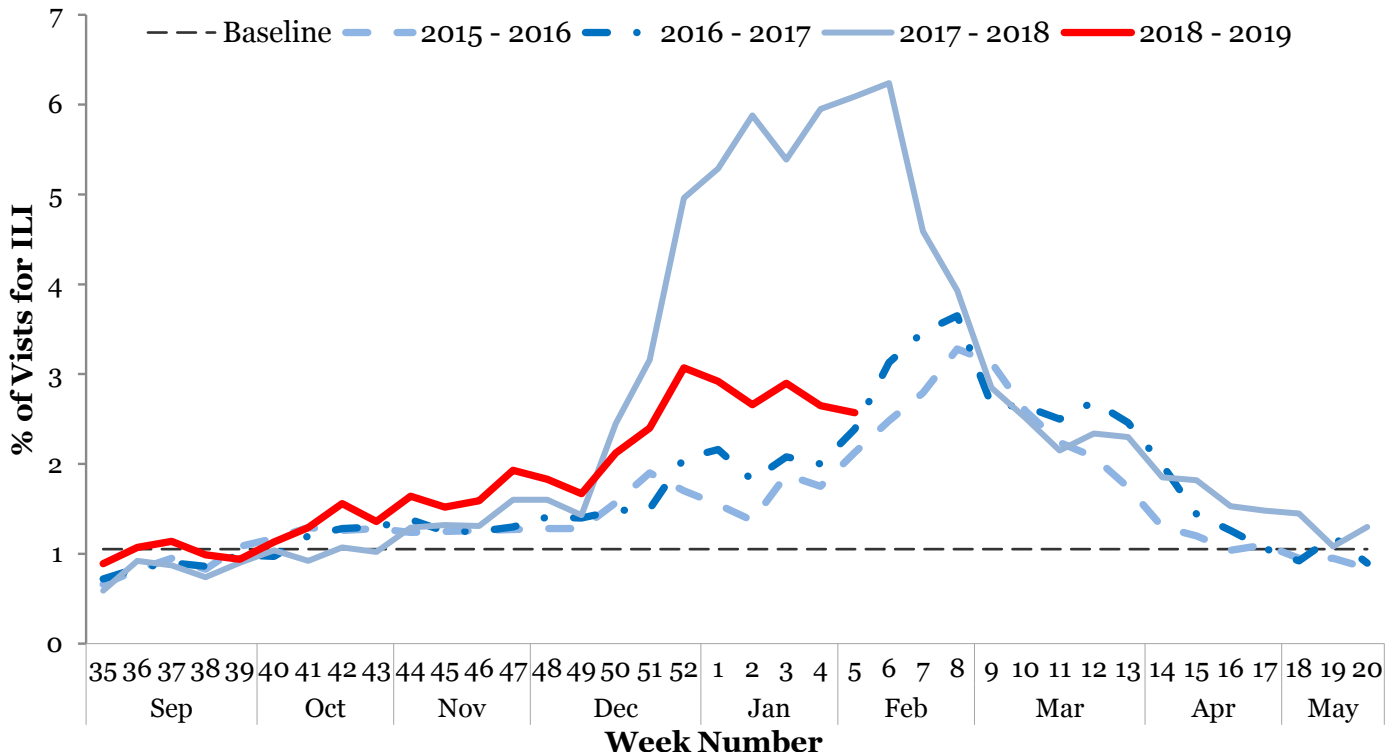
## I. Influenza-like Illness (ILI) Weekly Summary

- Influenza activity is currently **high**. This risk assessment is based on:
  - The proportion of emergency department visits for ILI was 2.57%, above the regional baseline of 1.05%, and has been decreasing for two weeks.
  - The proportion of outpatient provider visits for ILI was 1.47%, above the regional baseline of 0.73%, and has been increasing for one week.
  - The proportion of deaths associated with pneumonia or influenza was 4.73%, below the epidemic threshold of 6.96%.
- Six hundred sixteen (19.48%) laboratory specimens tested positive for influenza: 66 influenza A H1N1, 9 influenza A H3N2, 521 influenza A unknown subtype, and 20 influenza B.
- Six influenza-associated intensive care unit (ICU) hospitalizations were reported during Week 5. Seventy-eight ICU hospitalizations have been reported since Week 35.
- Since Week 35, 0 influenza-associated pediatric deaths, 0 clusters of ILI in schools, and 6 outbreaks of influenza in congregate care settings have been reported.
- **Current recommendations:** Promote vaccination, respiratory hygiene, and prompt treatment with antivirals. Facilities may wish to consider temporary visitor restrictions.

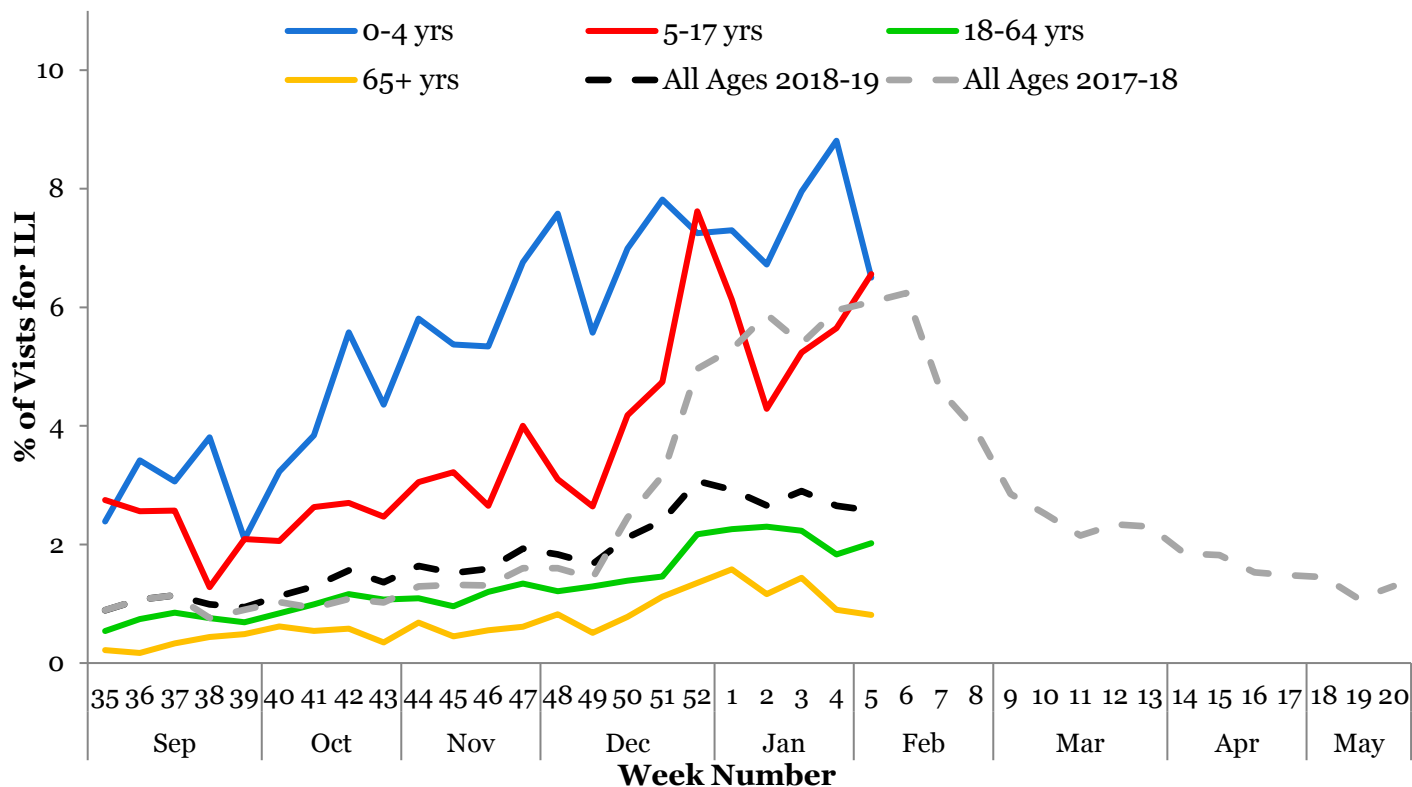
Note: Surveillance for ILI in suburban Cook County involves the weekly collection of data from hospitals, physicians' offices, and laboratories. Thank you to all of our surveillance partners for their help in collecting this information.

## II. Influenza Activity Level / Disease Burden

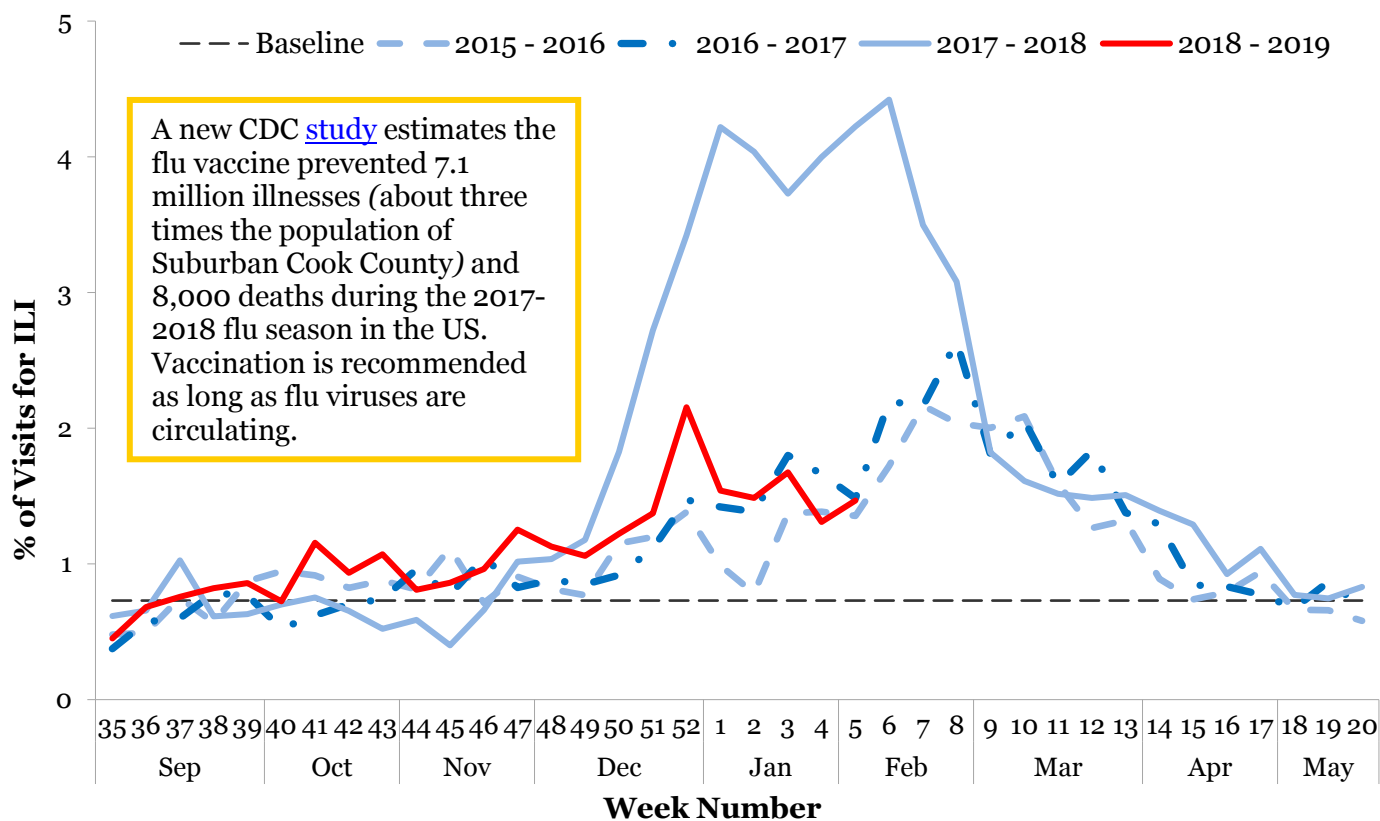
### Emergency Department Syndromic Surveillance<sup>1</sup>



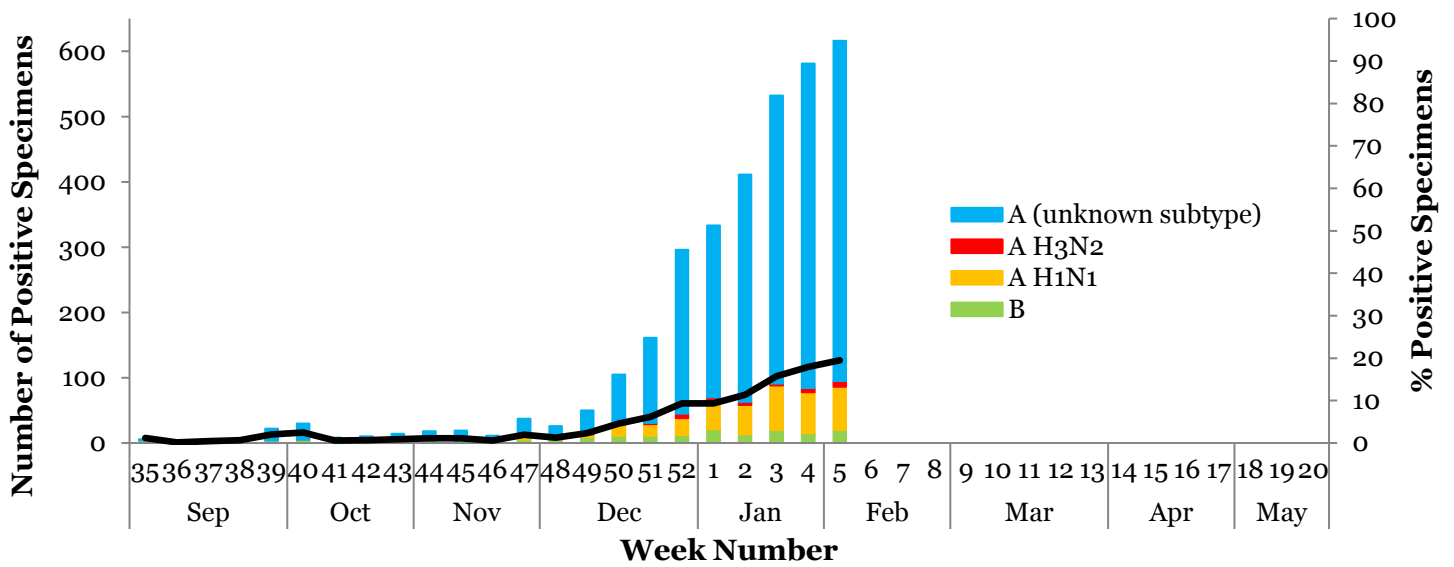
**Syndromic Surveillance by Age Group<sup>1</sup>**



**Outpatient Sentinel Providers<sup>2</sup>**



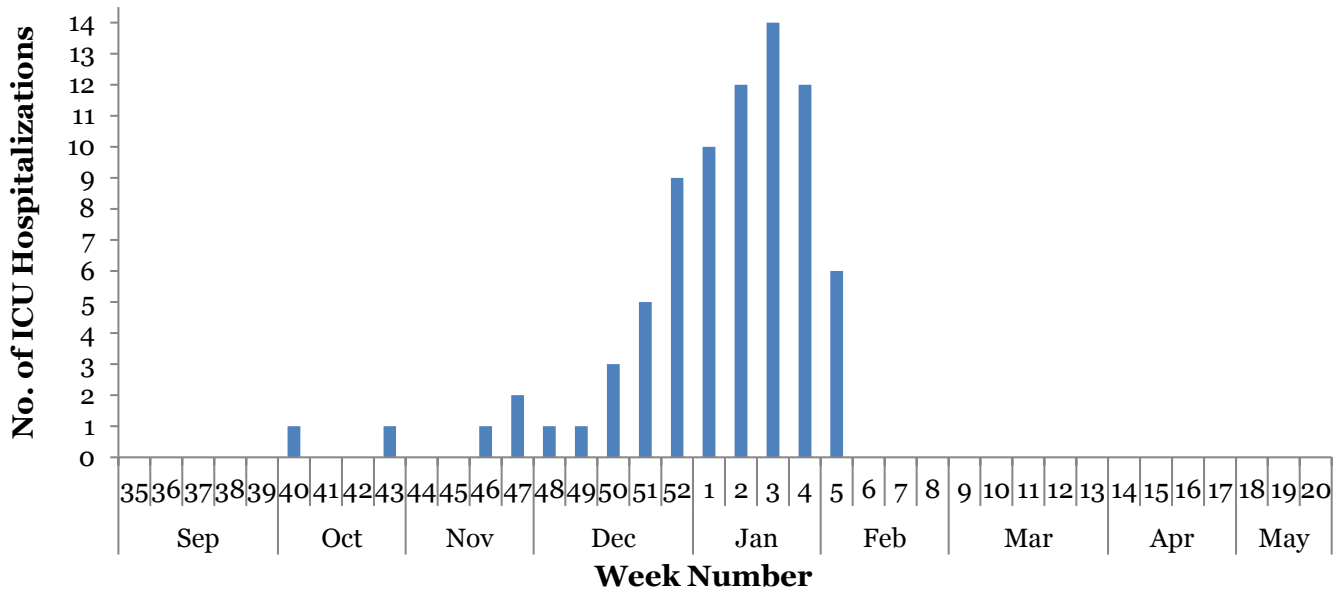
### III. Circulating Strains<sup>3</sup>



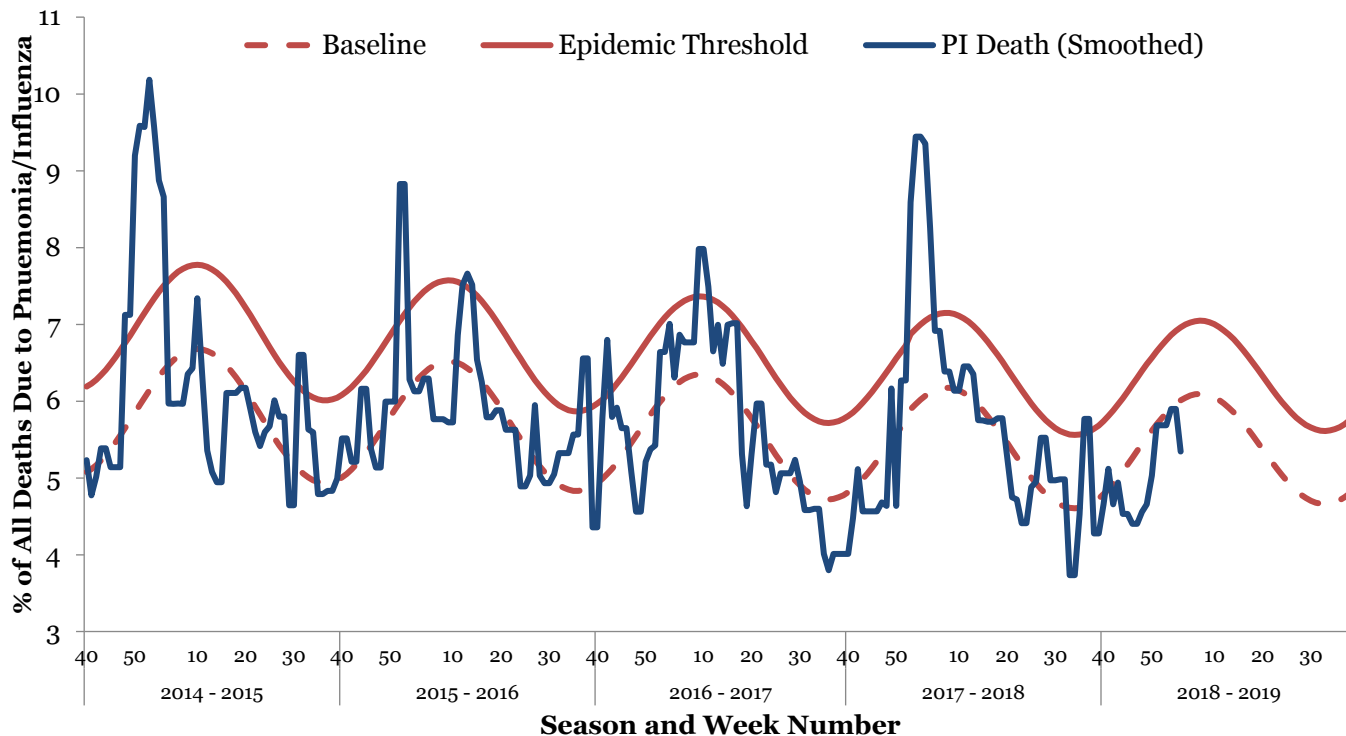
### IV. Seasonal Severity

#### ICU Hospitalizations<sup>4</sup>

Cumulative Case Count	#	Incidence Rate	Per 100,000
Total Cases	78		3.44
Incidence Rate by Age		Incidence Rate by Region	
0-4	5.58	North	2.48
5-24	0.50	West	3.77
25-49	1.99	Southwest	5.22
50-64	4.86	South	3.60
65+	9.64		



**Pneumonia and Influenza Mortality<sup>5</sup>**



**V. Regional Flu Activity<sup>1</sup>**

