



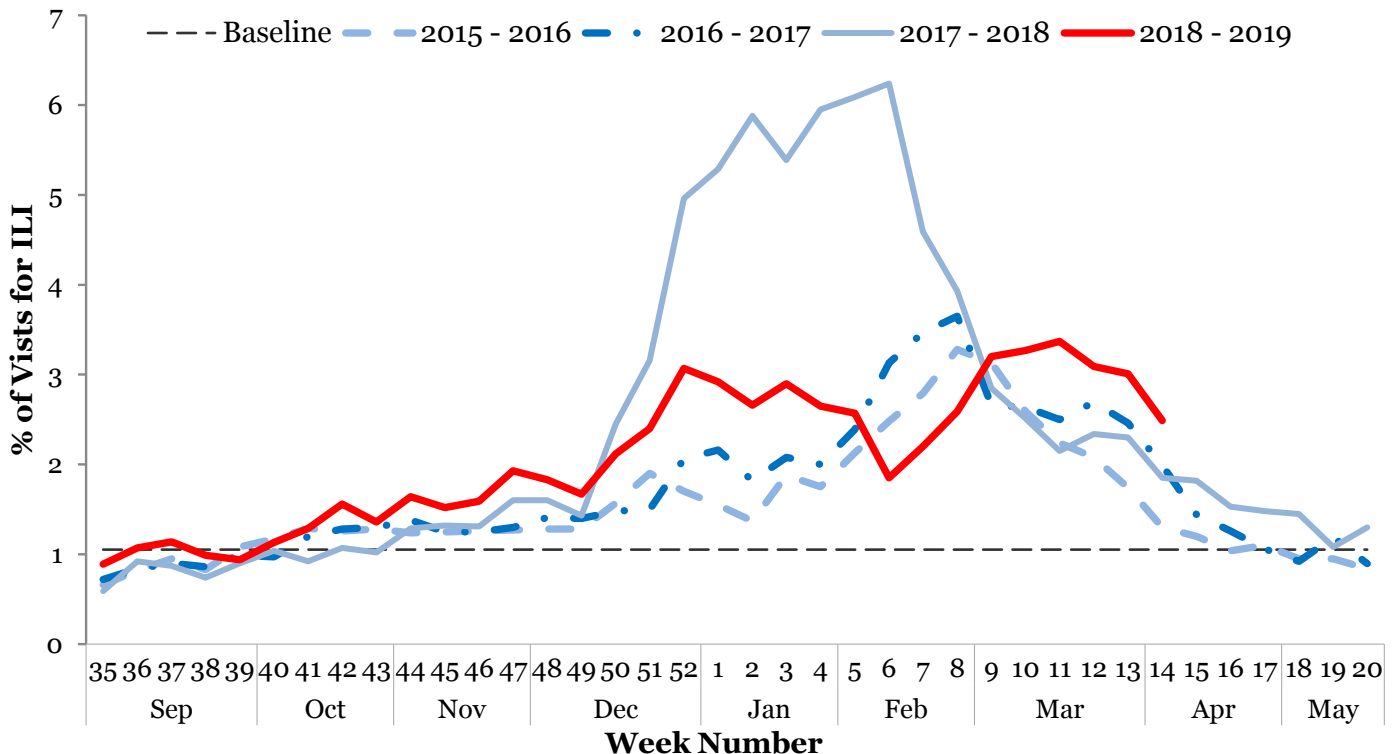
**I. Influenza-like Illness (ILI) Weekly Summary**

- Influenza activity is currently **decreasing**. This risk assessment is based on:
  - The proportion of emergency department visits for ILI was 2.49%, above the regional baseline of 1.05%, and has been decreasing for three weeks.
  - The proportion of outpatient provider visits for ILI was 1.25%, above the regional baseline of 0.73%, and has been decreasing for three weeks.
  - The proportion of deaths associated with pneumonia or influenza was 6.51%, below the epidemic threshold of 6.92%.
- Nine-hundred thirty-nine (22.60%) laboratory specimens tested positive for influenza: 60 influenza A H3N2, 38 influenza A H1N1, 744 influenza A unknown subtype, and 97 influenza B.
- Eleven influenza-associated intensive care unit (ICU) hospitalizations were reported during Week 14. Two-hundred eleven ICU hospitalizations have been reported since Week 35.
- Since Week 35, 0 influenza-associated pediatric deaths, 12 clusters of ILI in schools, and 19 outbreaks of influenza in congregate care settings have been reported.
- **Current recommendations:** Promote vaccination, respiratory hygiene, and prompt treatment with antivirals. Facilities may wish to consider temporary visitor restrictions.

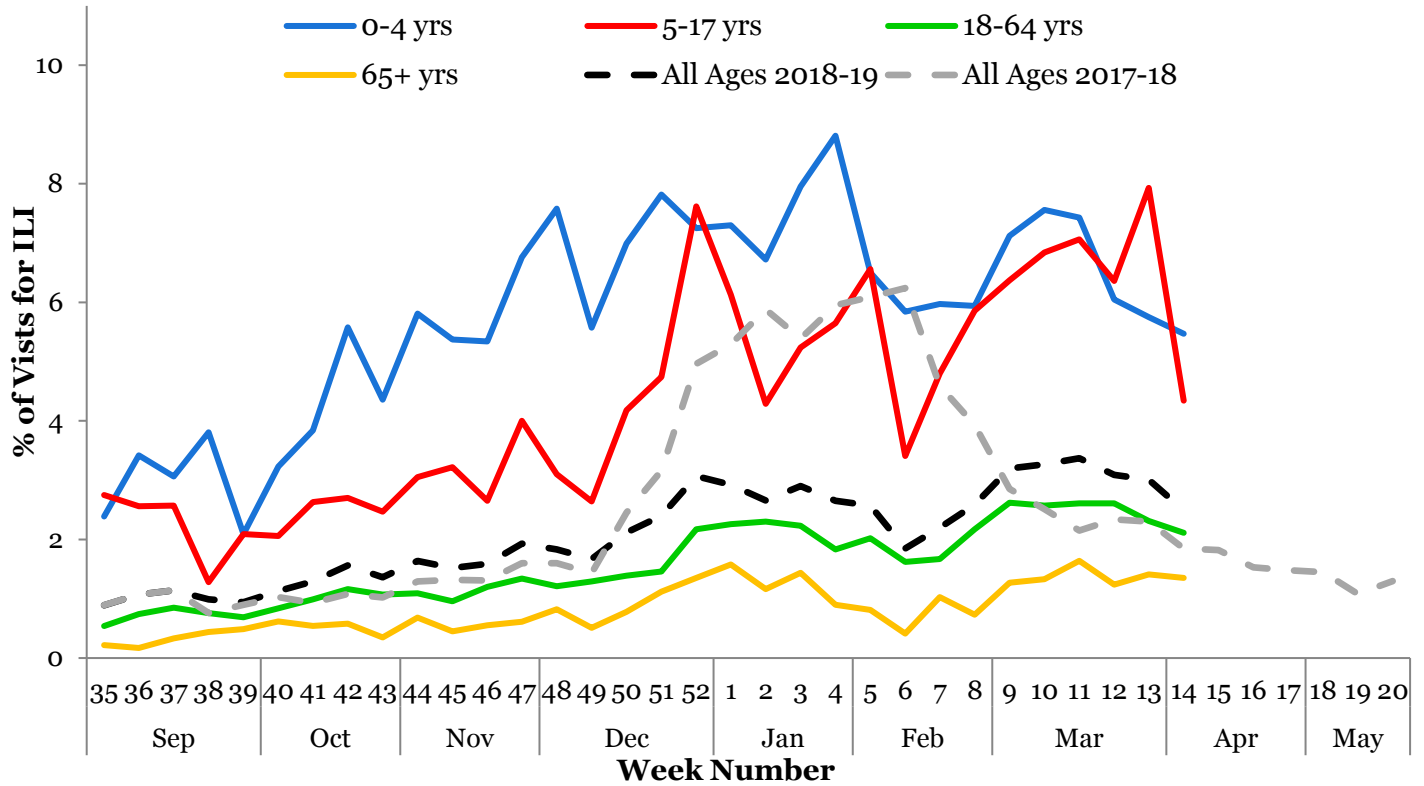
Note: Surveillance for ILI in suburban Cook County involves the weekly collection of data from hospitals, physicians' offices, and laboratories. Thank you to all of our surveillance partners for their help in collecting this information.

**II. Influenza Activity Level / Disease Burden**

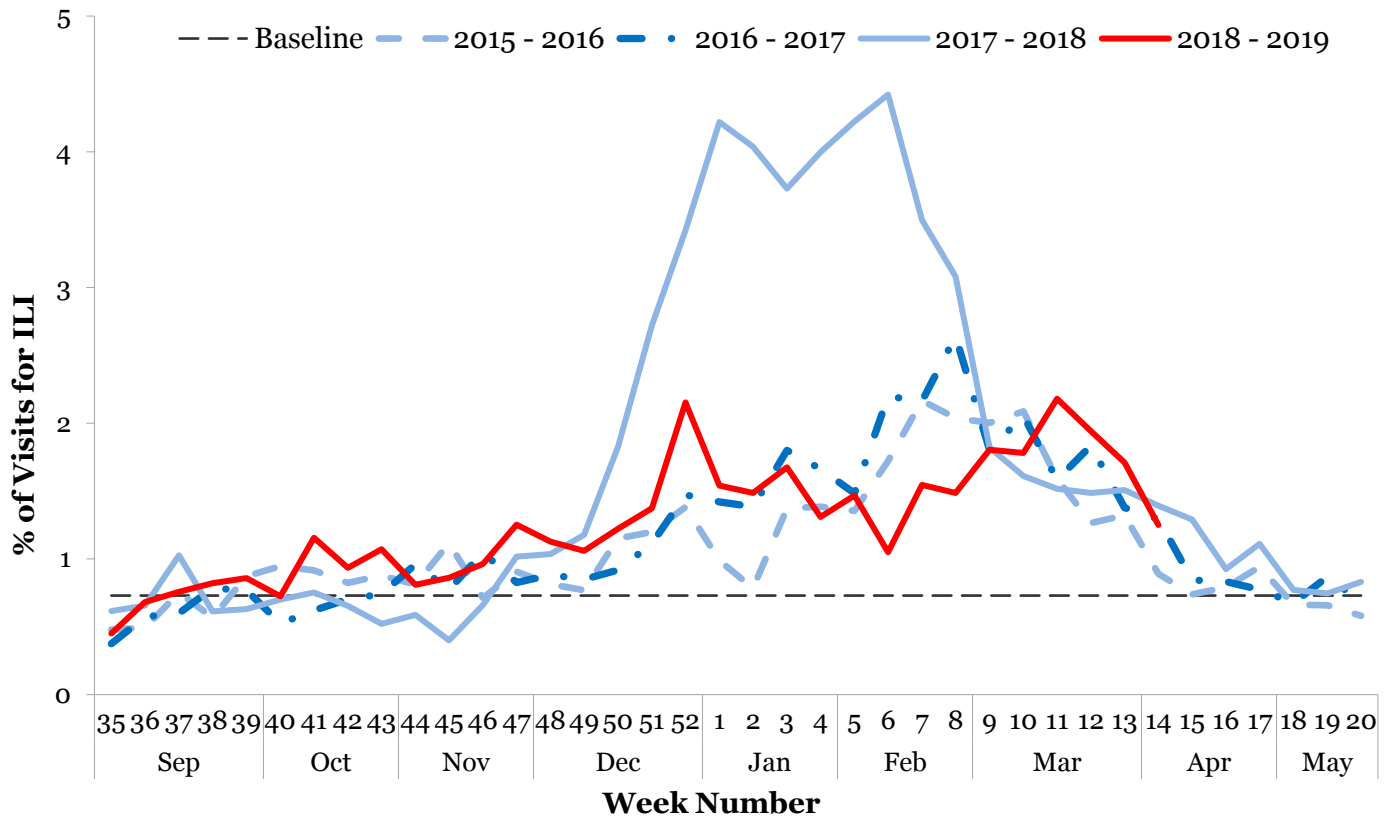
**Emergency Department Syndromic Surveillance<sup>1</sup>**



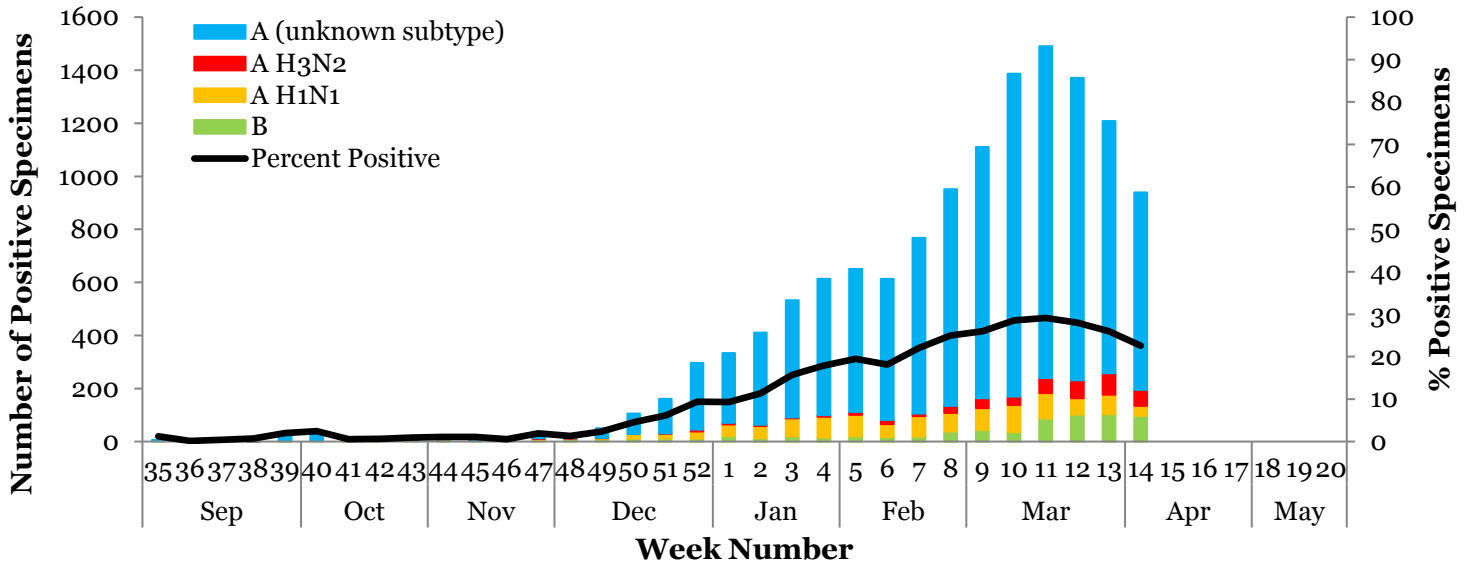
**Syndromic Surveillance by Age Group<sup>1</sup>**



**Outpatient Sentinel Providers<sup>2</sup>**



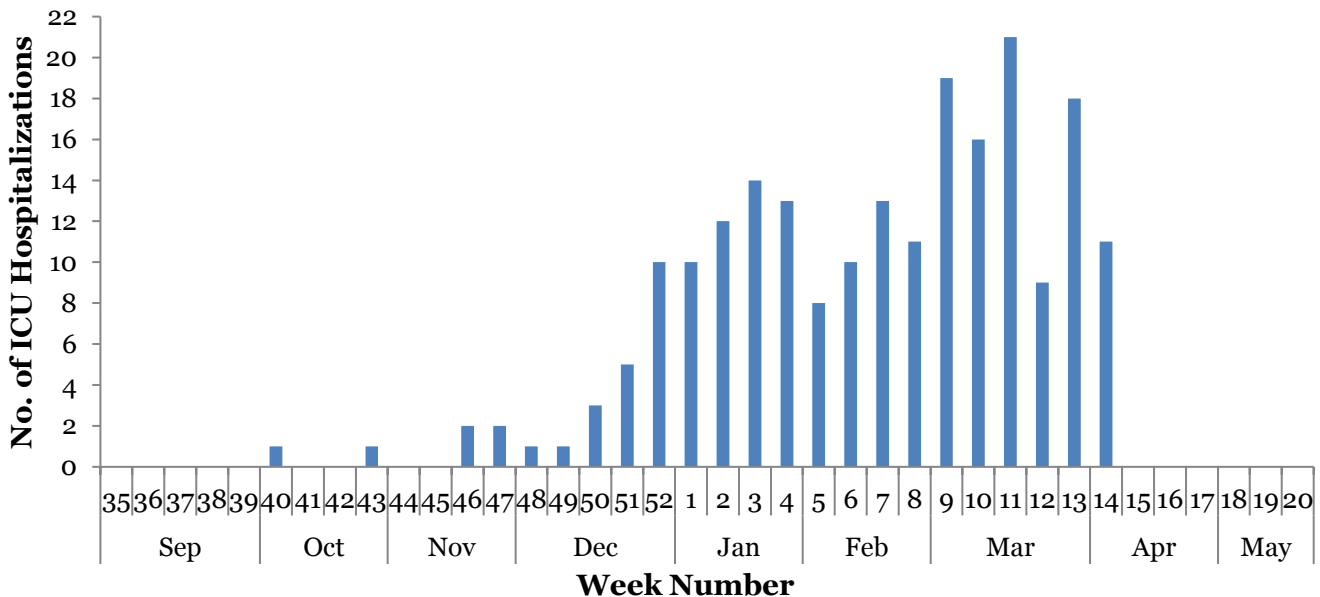
### III. Circulating Strains<sup>3</sup>



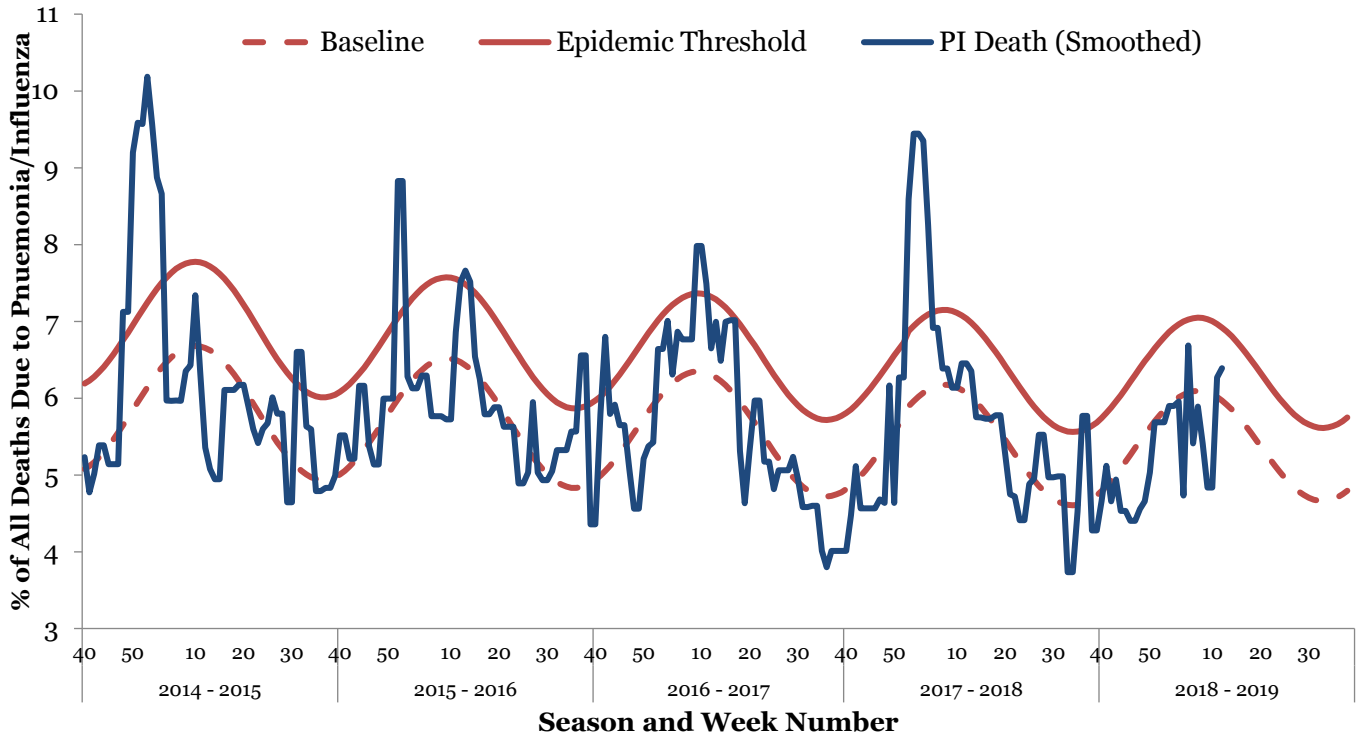
### IV. Seasonal Severity

#### ICU Hospitalizations<sup>4</sup>

Cumulative Case Count	#	Incidence Rate	Per 100,000
Total Cases	211		9.31
Incidence Rate by Age		Incidence Rate by Region	
0-4	10.47	North	8.62
5-24	3.31	West	10.12
25-49	3.97	Southwest	10.99
50-64	10.83	South	8.48
65+	31.17		



**Pneumonia and Influenza Mortality<sup>5</sup>**



**V. Regional Flu Activity<sup>1</sup>**

