

# COVID-19 and Schools: a review of Illinois State Board of Education (ISBE) and Illinois Department of Public Health (IDPH) Guidance

August 4, 2020

School Health Webinar

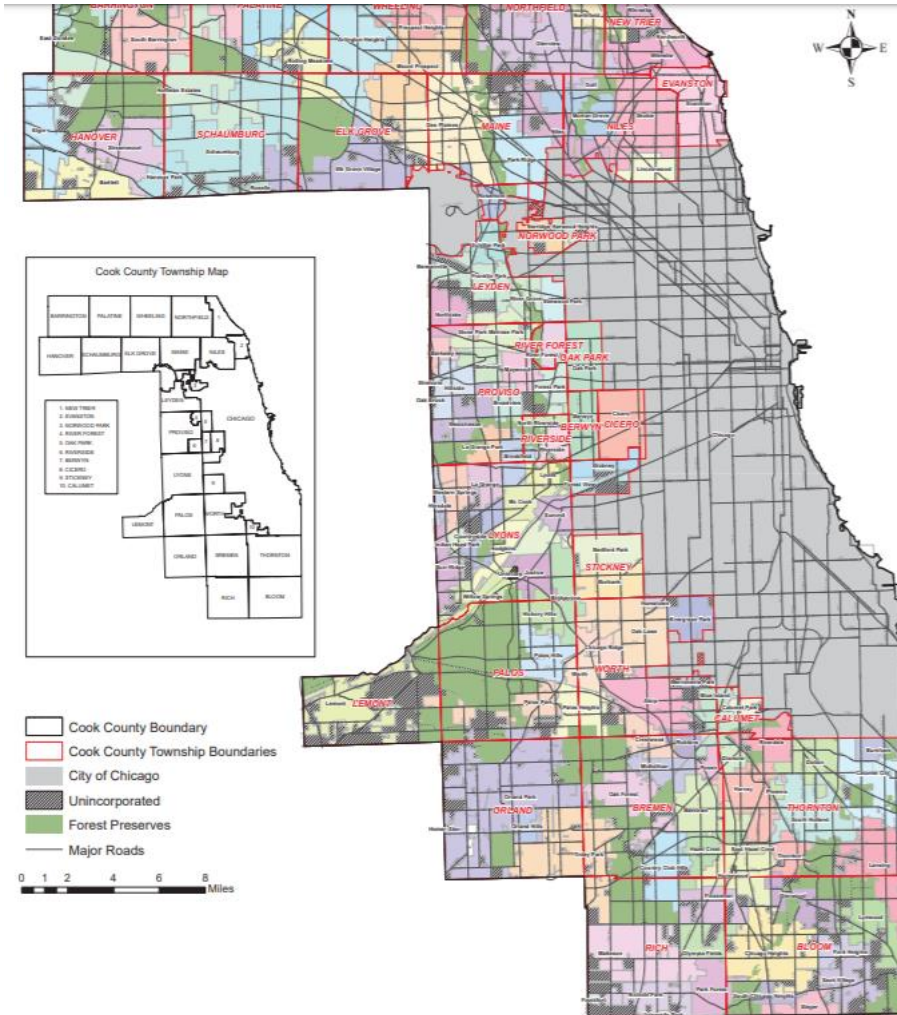


Cook County DEPT. of  
Public Health



COOK COUNTY  
**HEALTH**

# Certified Health Departments in Suburban Cook County



**Cook County Department of Public Health** –serves all of suburban Cook except: for the following communities:

**Evanston** Department of Public Health

**Oak Park** Department of Public Health

**Skokie** Department of Public Health

**Stickney** Public Health District  
(Stickney Township)



**COOK COUNTY**  
**HEALTH**



Cook County  
**Public Health**  
Promoting health. Preventing disease. Protecting lives.

# What are the health departments doing?

- Surveillance
- Infection Control
- Contact Tracing
- Workplace safety
- Technical Assistance and referral
- Community Engagement

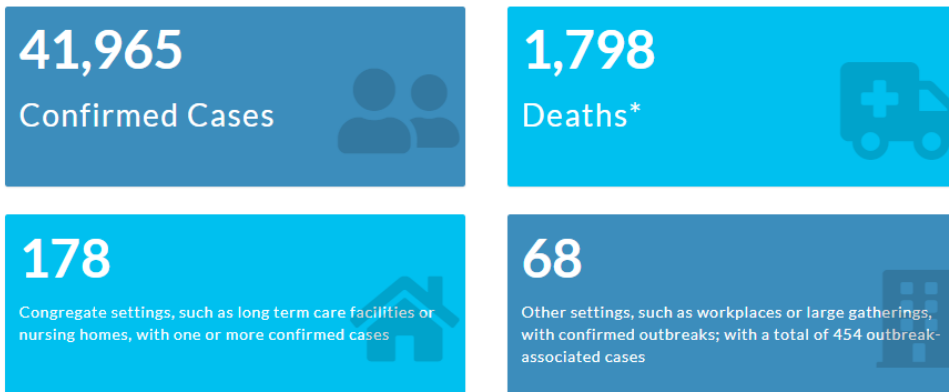




# Covid-19: Current Situation

<https://ccdphcd.shinyapps.io/covid19/>

As of August 02, 2020:



Municipality	COVID-19 Cases	Rate per 100,000 People
Elk Grove Village	414	1250
Elmwood Park	489	1965
Evergreen Park	288	1451
Flossmoor	137	1448
Ford Heights	43	1556
Forest Park	205	1447
Franklin Park	418	2280
Glencoe	48	550
Glenview	719	1609
Glenwood	212	2364



COOK COUNTY  
**HEALTH**



Cook County  
**Public Health**  
Promoting health. Preventing disease. Protecting jobs.

*Data are provisional*

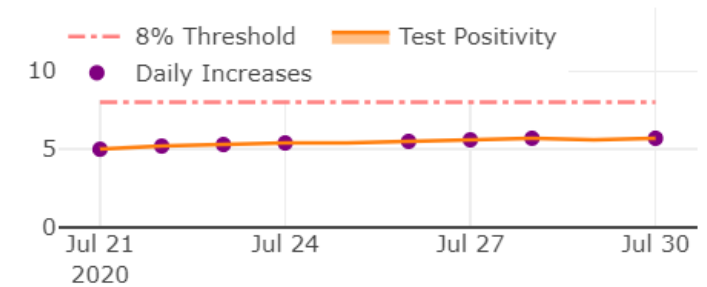
# Restore IL and Resurgence metrics

## Surveillance –what we are watching

- Metrics used to determine when the spread of the virus in a region requires additional mitigations:
- Sustained increase in 7-day rolling average (7 out of 10 days) in positivity rate **and** one of the following severity indicators:
  - Sustained 7-day increase in hospital admissions for a COVID-19 like illness AND
  - Reduction in hospital capacity threatening surge capabilities (ICU capacity or medical/surgical beds < 20%)
- OR three consecutive days averaging  $\geq 8\%$  positivity rate
- The updated guidance from IDPH establishes three tiers of mitigations that can be implemented should a region meet the resurgence metrics.
- Regions will work with IDPH to decide what mitigations are necessary

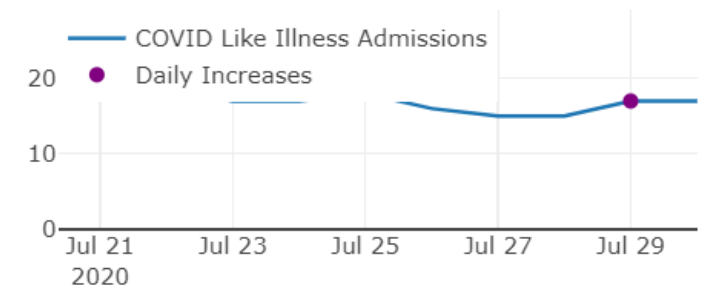
Test Positivity 7 Day Rolling Average

8 Days of Positivity Increases



Hospital Admissions 7 Day Rolling Average

3 Days of Hospital Admission Increases



Data: Aug 2, 2020



COOK COUNTY  
**HEALTH**



Cook County  
**Public Health**  
Promoting health. Preventing disease. Protecting jobs.

<https://dph.illinois.gov/regionmetrics?regionID=10>

# Executive Order 2020-47 COVID-19 Executive Order No. 44

Section 1. All public and nonpublic schools in Illinois serving pre-kindergarten through 12th grade students **may open for in-person educational purposes** following the completion of the regular 2019-2020 school term. All public and nonpublic **schools must follow IDPH and ISBE guidance** during Phase 4 and take proactive measures to ensure the safety of students, staff, and visitors, including, but not limited to:

- a. Limiting the number of people in one space to fifty or fewer.
- b. Ensuring compliance with social distancing requirements to the **greatest extent possible**. For purposes of this Executive Order, social distancing includes maintaining at least six foot distance from other individuals and discouraging physical contact between individuals.
- c. Requiring symptom screenings and temperature checks or requiring individuals to self-certify that they are free of COVID-19 symptoms before entering school buildings.
- d. Ensuring appropriate hygienic practices, including washing hands with soap and water for at least 20 seconds as frequently as possible or using hand sanitizer, covering coughs or sneezes (into sleeve or elbow, not hands), discouraging the sharing of personal items, and regularly cleaning and disinfecting high-touch surfaces.
- e. Requiring the use of appropriate PPE by students, staff, and visitors, including the use of face coverings by individuals who are over age two and able to medically tolerate a face covering. Schools must provide face coverings to all employees who are not able to maintain a minimum six-foot social distance at all times and, to the extent possible, make face coverings available for all students.

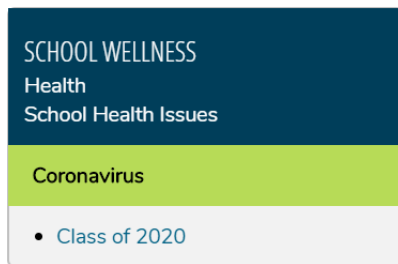


# ISBE/IDPH guidance

<https://www.isbe.net/Pages/covid19.aspx>



[Home](#) > [School Wellness](#) > [Health](#) > [School Health Issues](#) > [Coronavirus](#)



## SCHOOL WELLNESS CORONAVIRUS

### CORONAVIRUS (COVID-19) UPDATES AND RESOURCES



ISBE is working in partnership with the Illinois Department of Public Health (IDPH) to ensure we are providing the most current resources and guidance to support Illinois education communities regarding the coronavirus disease 2019 (COVID-19) outbreak. Please know that this is a rapidly evolving situation and we will continue to share up-to-date information as it becomes available.

RESOURCES



**COOK COUNTY**  
**HEALTH**



**Cook County** DEPT. OF  
**Public Health**  
Promoting health. Preventing disease. Protecting jobs.



# Guidance and FAQs



Cook County DEPT. of  
Public Health



COOK COUNTY  
**HEALTH**



# Face Coverings

## All masks, all the time? Yes, essentially.

- **Face shields should not be used in lieu of face coverings/masks.** Face shields and face masks serve different protective purposes.
- ISBE recommending that nurses with interaction with potential cases and custodial staff cleaning room after COVID identified should wear N95 mask, gowns, and gloves.
- Masks are currently understood to be effective as a form of source control to reduce the spread of COVID-19.
- Families/ children should be responsible for laundering masks – recommendation is NOT to launder at school. A clean mask should be worn every day.
- Teachers alone in their classroom with their door closed can remove their masks.
- Governor Pritzker preemptively filed a lawsuit seeking a judge's approval of the order requiring that all children, teachers and staff wear coverings over mouths and noses to reduce spread of COVID-19.



# Space and physical distance

## Physical distancing in schools

- Public health recommendations continue to include the standard of 6-feet distance between and around persons in addition to face coverings.
- ISBE Guidance indicates schools should be in compliance with social distancing requirements to the **greatest extent possible. 6 feet apart is still the Public Health (PH) standard**
- In classrooms, if possible, all desks should be 6 ft apart and facing the same direction
- Schools may want provide visual cues, like taped off lines or spaces
- Consider corridor traffic and how to maintain physical distance during passing periods, arrival and dismissal
- Staggered schedules may help
- Remind students – no handshakes, high-fives, or hugs



# Subdividing large spaces

- Field houses, large gyms, other very large rooms **can be utilized if separated into smaller rooms.**
- Groups in these spaces must be consistent groups of no more than 50 individuals, if 6 feet physical distancing is maintained.
- Must have physical barriers between the smaller spaces, but do not have to be impermeable barriers.
- These spaces CANNOT be partitioned to allow for more than 50 participants or spectators at events.

# Symptom Screenings

- IDPH currently requiring daily symptom screening and temperature checks for students, teachers, and visitors
- Self-certification with an electronic form is allowable per guidance
- CDC: symptoms in children include fever (100.4), headache, sore throat, cough, fatigue, nausea, vomiting, diarrhea
- CDC tool available: <https://www.cdc.gov/coronavirus/2019-ncov/downloads/community/schools-childcare/Daily-Home-Screening-for-Students-Checklist-ACTIVE-rev5A.pdf>

What do you do with this information?

- For students who have symptoms are suspected of having COVID-19:
- *CDC and IDPH guidelines for students who were suspected of having COVID-19, whether they were tested or not, state that:*
  - *24 hours must elapse from resolution of fever without fever-reducing medication **and***
  - *10 days must pass after symptoms first appeared. (p.31)*



COOK COUNTY  
**HEALTH**



Cook County  
**Public Health**  
Promoting health. Preventing disease. Protecting lives.



# Absence line

*From guidance: Attendance personnel should request specific symptom reporting when absences are reported along with COVID-19 diagnoses and COVID-19 exposure. Information should be documented and shared with the health staff or other appropriate personnel **and the local health department.** (p.30)*

Ask parents/guardians to leave information about:

- COVID –like symptoms (fever, cough, etc.)
  - If COVID-like symptoms, have they been exposed to a confirmed case?
- COVID diagnosis – was there a positive test? When?
- Please ONLY notify the health department if you have **a report of a confirmed case**



# COVID-like symptoms during school

- Anyone at school who shows symptoms should be immediately separated from the rest of the school population.
- Designate a safe area to separate anyone experiencing COVID-19-like symptoms.
- Students should never be left alone and must always be supervised while maintaining necessary precautions.
- Individuals who are ill should be sent home. If emergency services are necessary, call 911.
- When interacting with students or staff who may be sick, school nurses should wear proper PPE, including fit-tested N95 masks, if available, gowns, and gloves.
- Strongly recommend to the family that the student get tested for COVID-19.
- [dph.illinois.gov/covid19/covid-19-testing-sites](https://dph.illinois.gov/covid19/covid-19-testing-sites)



# Positive Cases

To report a case to **CCDPH**, call **708-836-8699**

- Please designate one person to be your school's point of contact with your LHD.
- Alert your LHD once you have confirmation of a positive case among students, staff or faculty.
  - Be ready to provide the + case name, DOB, phone, parent/guardian info and last day of school attendance.
  - If symptomatic, date began to feel ill
  - Date of test, provider, and/or testing site
- Discussion with LHD will assist you with quarantine and isolation guidance, determining who is a close contact, next steps, contact tracing
- Does a positive case = closed schools?
  - ISBE indicates that multiple factors will be considered, including community transmission and staff positivity
- **For general COVID-19 questions, please use [ccdph.covid19@cookcountyhhs.org](mailto:ccdph.covid19@cookcountyhhs.org)**



# Positive Case – School Community Notification

- After reporting and in collaboration with your LHD, send prompt notification to *all* in school.  
Draft letter available at ISBE COVID site:

*Dear Families and Staff: **This letter is to inform you that an** individual(s) at [name of School] has tested positive for COVID-19...*

*To prevent further spread of the disease, (School name) is taking the following steps:*

- *Temporary closure to identify and notify close contacts (i.e., persons who were within six feet of a COVID-positive individual for 15 minutes or longer).*
- *Placing staff members and students who are identified as having prolonged close contact to the COVID-19 case(s) in quarantine for 14 days.*
- *Ongoing monitoring of students and staff for signs and symptoms of illness and evaluation of illness reports to promptly identify possible outbreaks.*
- *Conducting a deep clean and disinfection of the areas impacted by potential exposure to the COVID-19 virus.*
- *Other*



**COOK COUNTY**  
**HEALTH**



Cook County DEPT. of  
**Public Health**  
Promoting health. Preventing disease. Preserving life.



# Contact Tracing

Quick notification is key to containing spread

- Contact tracing enables the local health department to interview cases about their contacts and places they've visited in order to provide them and those potentially exposed with guidance around quarantine and isolation.
- The faster contact tracing begins, the faster contacts are notified, and quarantine can begin

How can schools help?

- Timely reporting
- Complete contact information
- Encourage families to take our calls and answer the questions
  - Will never ask for financial information, SSN #s, etc.



**COOK COUNTY**  
**HEALTH**



Cook County DEPT.  
**Public Health**  
Promoting health. Preventing disease. Protecting lives.

# Cleaning Basics

Increased routine cleaning may be needed, especially of frequently-touched surfaces like tables, doorknobs, light switches, countertops, handles, desks, phones, keyboards, toilets, faucets, sinks, etc.

Cleaning after positive cases:

- A deep clean must be performed.
- Close off areas used by person who is ill. Don't use again until proper cleaning has taken place.
  - Open windows to increase air circulation
  - Wait at least 24 hours before cleaning and disinfecting -- after virus settles.
- Visibly dirty areas should be scrubbed to remove visible dirt/soilage and then an approved disinfectant should be used to kill germs.
- Use an EPA-approved disinfectant – <https://www.cdc.gov/coronavirus/2019-ncov/community/disinfecting-building-facility.html>
- Household bleach can be used if appropriate for the surface - 5 tablespoons (1/3rd cup) bleach per gallon of room temperature water.
- Launder or clean soft surfaces with soap and water, OR use EPA-approved disinfectant



# Cleaning - continued

- Consider putting a **wipeable cover** on electronics. Clean according to manufacturer instructions, or **use alcohol-based wipes or sprays containing at least 70% alcohol**.
- Vacuum the space, if needed, with a high-efficiency particulate air (HEPA) filter, if available. Do not vacuum the space when people are in it.
- Buildings staff cleaning after a sick person has been in the room should wear gloves and fit-tested N95 masks if available.
- Turn off room fans and the central HVAC system that services the room or space, so that particles that escape from vacuuming will not circulate throughout the facility
- MORE TO COME on ventilation systems and other buildings issues – special webinar session for Buildings and Grounds staff and Facilities Managers:
  - ***Aug 13 – 11a – 1p: Facilities Systems Best Practices: Mechanical, Electrical, Plumbing, and Ventilation- Salvatore Cali, OAI***



# Role of Local Health Departments (LHDs)

- ISBE and the Illinois Department of Public Health (IDPH) issue guidance for schools
- Under the Illinois Administrative Code, LHDs have no formal legal authority to provide specific endorsement or enforcement for local school district COVID-19 reopening plans.
- LHDs have responsibility to contact trace and investigate cases within their jurisdictions, and provide infection control guidance
- LHDs can provide technical assistance, help to answer questions, connect schools to resources





# Top 10 Questions Submitted by Suburban Cook County Schools

1. What are standards for PPE? Should it be reusable or disposable?
2. Should there be mass COVID-19 testing in schools for students and staff?
3. Are we (schools) expected to conduct contact tracing?
4. Will CCDPH be able to send staff to our schools to tour our buildings for compliance?
5. Will the health department review our school plans?

# Top 10 Questions Submitted by Suburban Cook County Schools

6. What is considered close contact? Is it just within six feet? Does the amount of time of exposure matter?
7. What process (call, email) will schools be using to effectively communicate with CCDPH and/or other health departments?
8. Should we encourage families and staff to self-quarantine if they have traveled to “hot spots, including in the US?
9. Can we use gyms/auditoriums for instruction?
10. Has there been any scientific consensus reached on Airborne spread?

# Resources

- CCDPH COVID-19 positive case reporting: 708-836-8699
- CCDPH – hotline and email
  - 708-633-3319    [ccdph.COVID19@cookcountyhhs.org](mailto:ccdph.COVID19@cookcountyhhs.org)
- Restore IL plan: <https://coronavirus.illinois.gov/s/restore-illinois-introduction>
- Illinois State Board of Education: <https://www.isbe.net/covid19>
- Childcare guidance: <https://dph.illinois.gov/covid19/community-guidance/daycare-centers>
- Illinois Board of Higher Education: <https://www.ibhe.org/IBHE-DG-Institutions-Covi19.html>
- CDC: <https://www.cdc.gov/coronavirus/2019-ncov/community/colleges-universities/considerations.html>

# Upcoming Webinars

Registration: <https://bit.ly/2zFl9uQ>

## Protecting Social-Emotional Health

Tuesday, August 11, 2020 11a-1pm

## Facilities Systems Best Practices: Mechanical, Electrical, Plumbing and Ventilation

Thursday, August 13, 2020 11a-1pm

***\*This webinar is for facilities managers/engineers***

*[REGISTRATION is closed for this session, sign up for the wait list]*

## Infection Prevention and Control Principles

Tuesday, August 18, 2020 12p-2pm



# Thank you.



Cook County DEPT. of  
Public Health



COOK COUNTY  
**HEALTH**