



This report describes current trends in suburban Cook County for influenza and other respiratory viruses. Selected graphics are presented on pages 2-4. For complete surveillance data on flu, COVID-19, and RSV, please visit our dashboard at <https://ccdphcd.shinyapps.io/influenza/>. CCDPH is also now tracking “Broad Respiratory” illness in our hospitalization data. This CDC-defined syndrome includes a wide array of specific and non-specific respiratory diagnoses and complications, such as bronchitis or pneumonia.

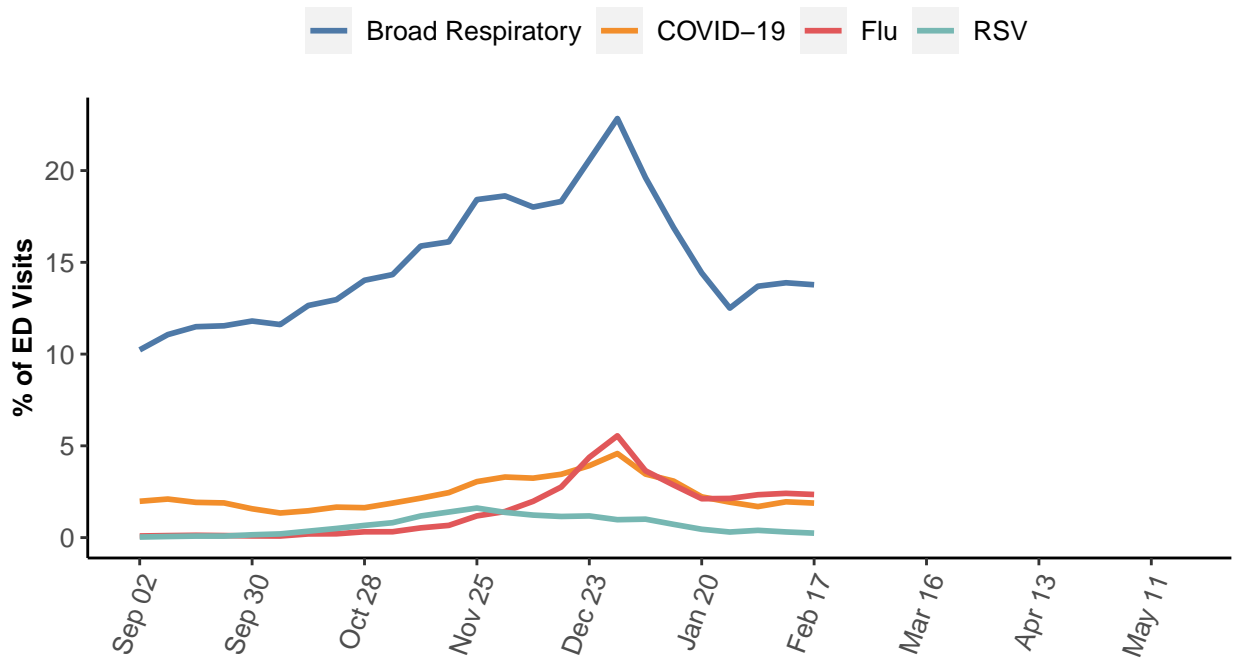
Key Points

Overall, influenza activity is **Low** and stable.

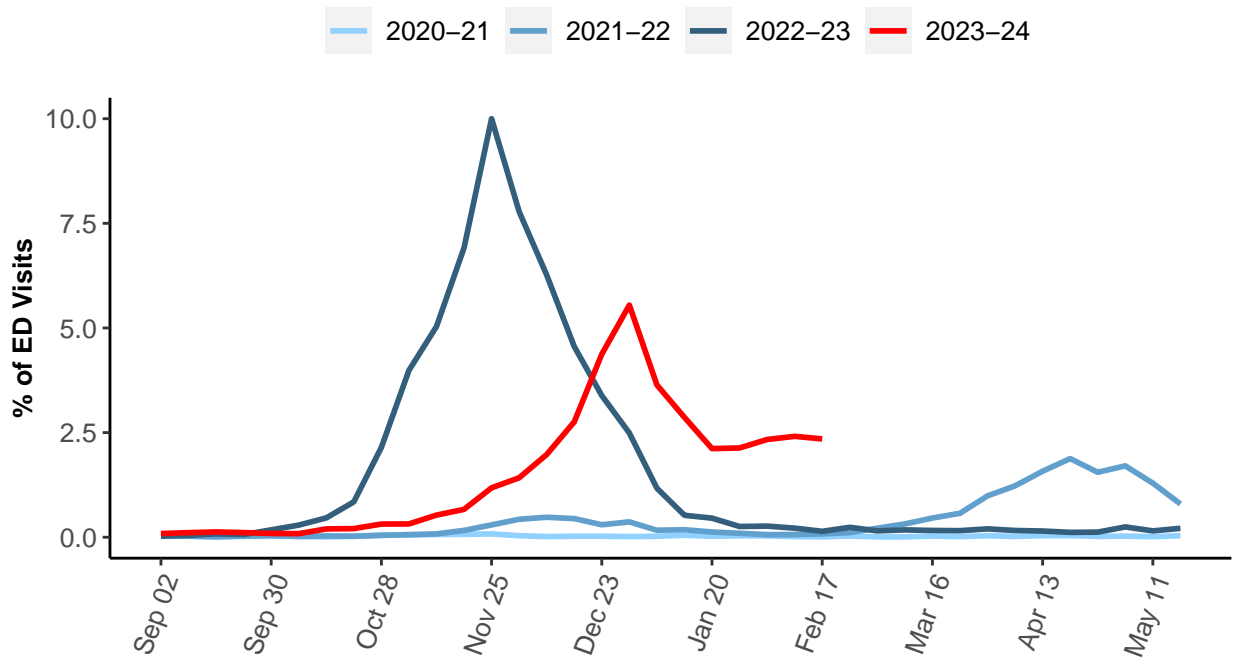
- While hospital admissions for flu and **COVID-19** are lower than the peaks observed in late December but remain above baseline.
- Flu-related ICU admission rates are the highest among adults over 65 and non-Hispanic Black residents.
- The percent of deaths associated with pneumonia, influenza, or COVID-19 surpassed last winter’s respiratory virus season in early January but continues to trend down.
- RSV remains elevated, especially in children under 5, but activity has peaked for the season.
- Of specimens tested for influenza, 10% are positive. 3.3% of RSV and 9.1% of COVID-19 specimens tested are positive.
- Of specimens positive for influenza, 90% have been influenza A. 481 influenza A specimens have sub-type available. Of these, 64% were pandemic 2009 H1N1 and 36% were H3N2. Detections of influenza B continue to increase.
- Wastewater detections for influenza B remain high. Influenza A detections remain elevated, but viral concentrations are lower than those seen in December.
- Recommendations for individuals include staying up-to-date with all [recommended respiratory vaccines](#). Recommendations also include staying home when sick, avoiding contact with others who might be sick, and practicing good respiratory hygiene like washing your hands and covering your cough.
- Recommendations for communities and healthcare organizations include promoting equitable access to respiratory vaccines and tests, masks, medications, and support services. Support individuals to stay home when sick with respiratory symptoms or testing positive for COVID-19.

We would like to thank all of our surveillance partners for their help in collecting this information! For additional details on our methods, please visit <https://cookcountypublichealth.org/documents/cd/respiratory-surveillance-methods.html>

Emergency Rooms Visits by Respiratory Virus

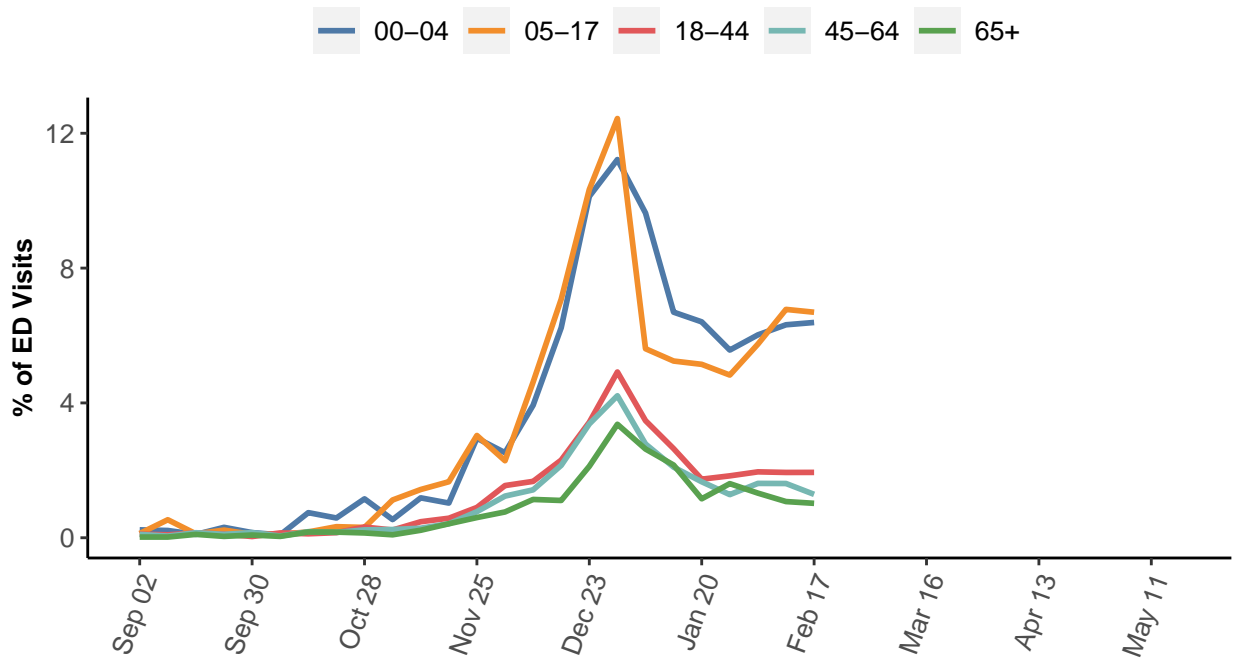


Emergency Rooms Visits for Flu By Season





Emergency Room Visits for Flu by Age



Percent of Respiratory Specimens Positive for Flu

