



This report describes current trends in suburban Cook County for COVID-19, influenza, and RSV. Selected graphics are presented on pages 2-4. For complete surveillance data on these pathogens, please visit our [respiratory dashboard](#).

Key Points

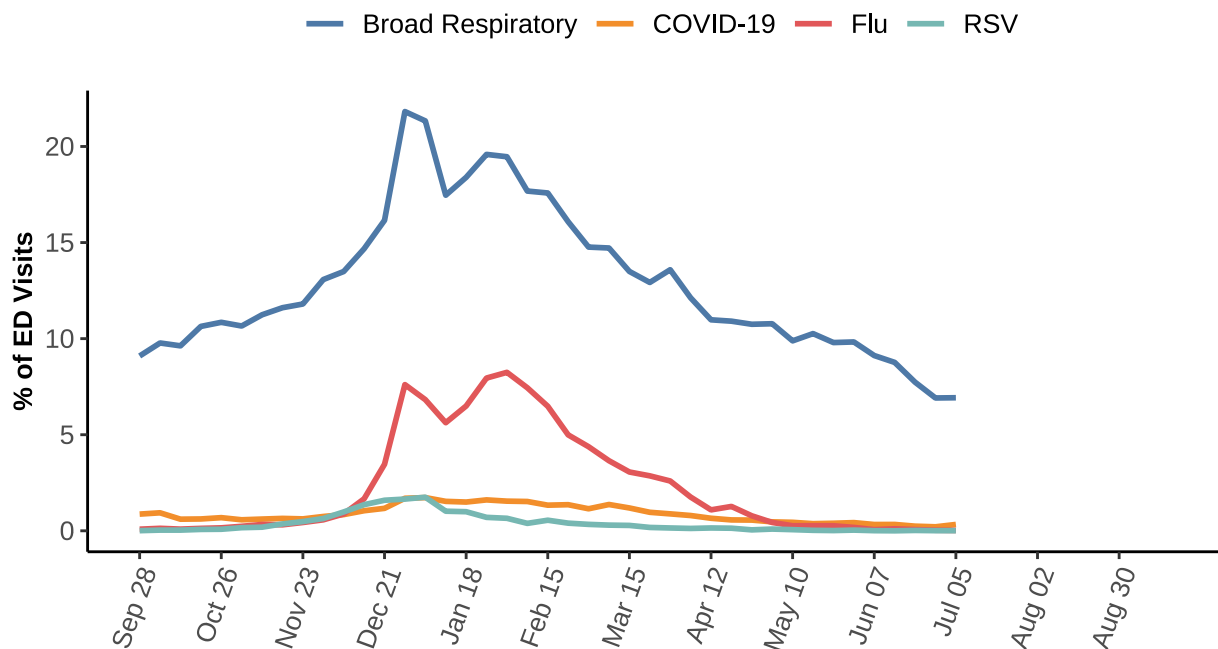
COVID-19 activity is **minimal** and stable. **Influenza** activity is **minimal** and stable. **RSV** activity is **minimal** and stable.

- Activity is currently minimal for all three monitored pathogens - COVID-19, flu, and RSV.
- Emergency room visits and hospital admissions for all three monitored pathogens have returned to expected baseline levels.
- Only 1 ICU admission was reported in the past week for COVID-19, and there were no ICU admissions for flu or RSV.
- Of specimens tested for COVID-19, 2.4% were positive. Percent positivity for flu was 0.2% and, for RSV, only 0.2% of specimens tested were positive.
- Wastewater detections for flu, RSV, and SARS-CoV-2 are low.
- CDC's [core recommendations](#) for *individuals* include staying up to date with all recommended respiratory virus [vaccines](#), practicing good respiratory hygiene (covering your cough, washing your hands), taking steps for cleaner air, and using precautions to prevent the spread of respiratory viruses when you are sick. This means staying home until you've been fever-free for 24 hours and your symptoms are getting better. CDC also recommends individuals are familiar with treatment options for flu and COVID-19, especially if you are at [high risk](#) for severe outcomes.
- CDC's [core recommendations](#) for *organizations* include supporting vaccination efforts (like hosting a clinic or providing time off for vaccination and recovery), encouraging good respiratory hygiene with posters and adequate hand-washing supplies, taking steps for cleaner air, and supporting time off for individuals to stay home when sick or to seek treatment.
- Respiratory activity has returned to baseline after the winter season, though [core strategies](#) to prevent illness should be practiced year-round.

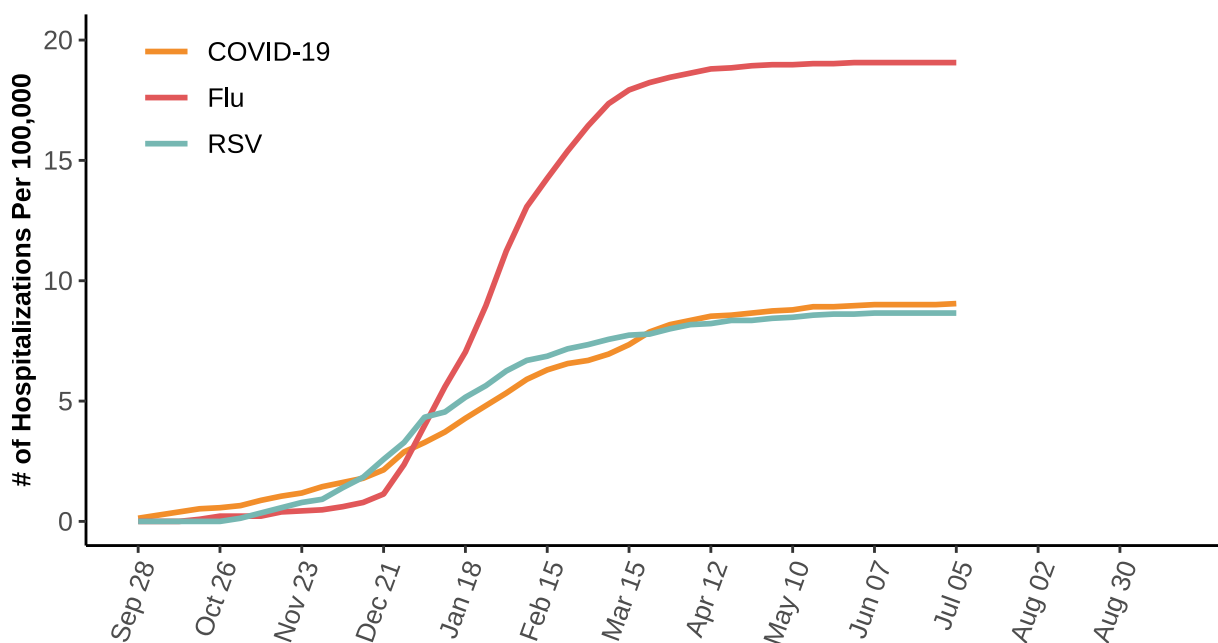
We would like to thank all of our surveillance partners for their help in collecting this information! Additional details on our methods can be found [here](#).



Emergency Rooms Visits by Respiratory Diagnosis



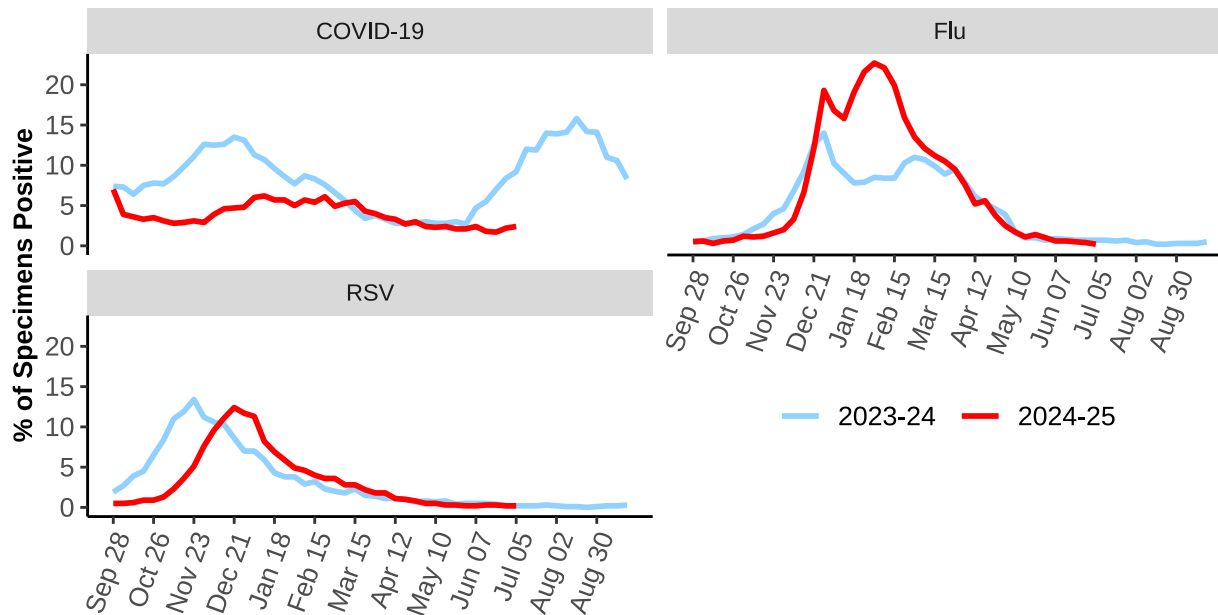
Cumulative ICU Admission Rate for Reportable Respiratory Viruses





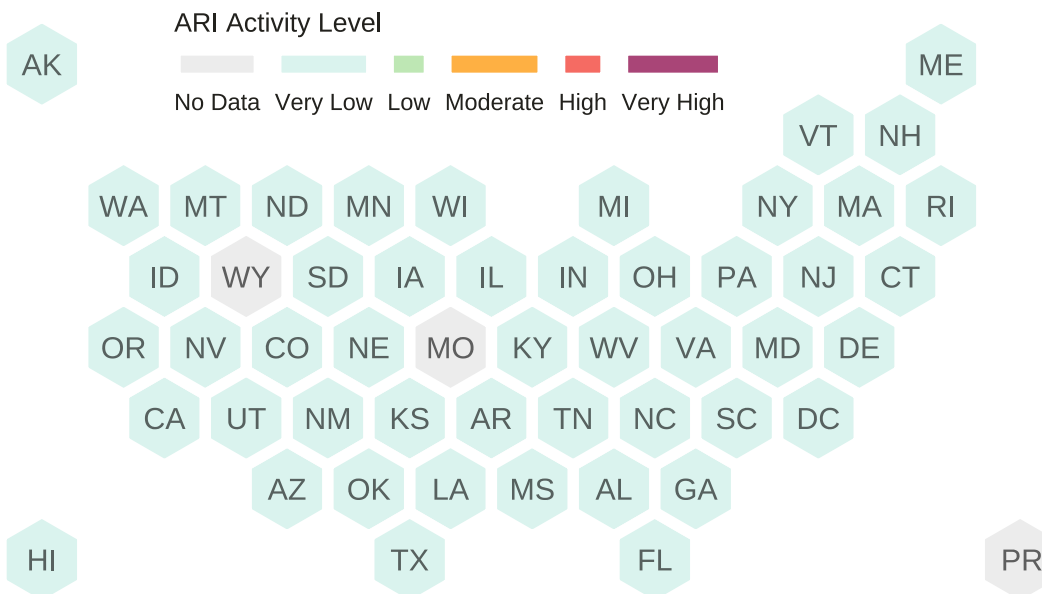
Percent Positivity by Respiratory Virus

Laboratories contributing data differ by pathogen. Lab data may not be comparable between viruses. Graphics are better used to look at trajectory for a given virus over time.



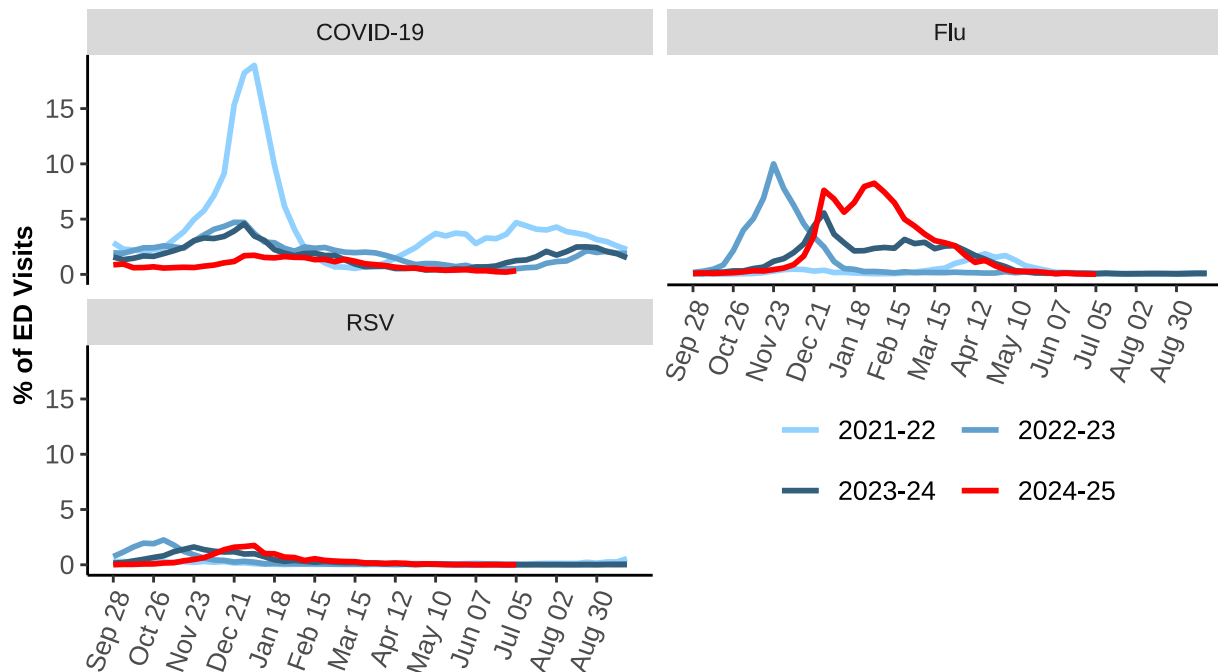
CDC Acute Respiratory Illness Activity Levels by State

Data for the week ending 2025-07-05, most recent CDC data available





Emergency Rooms Visits by Season and Diagnosis



Emergency Room Visits by Age and Diagnosis

