

RESPIRATORY VIRUS SURVEILLANCE REPORT

Week 34: Aug 17-Aug 23, 2025



Cook County DEPT. of
Public Health

BUILDING
HEALTHIER
COMMUNITIES

Purpose: This report describes current trends in suburban Cook County for COVID-19, influenza, and RSV. Selected graphics are presented on pages 2-4. For complete surveillance data on these pathogens, please visit our [respiratory dashboard](#).

Key Points:

COVID-19 activity is **minimal** and stable. **Influenza** activity is **minimal** and stable. **RSV** activity is **minimal** and stable.

- Activity is currently minimal for all three monitored pathogens - COVID-19, flu, and RSV.
- Emergency room visits for COVID-19 remain low overall, but have been steadily increasing over the last two months, especially for children under 5. Hospital admissions for all three monitored pathogens are still at or near baseline levels.
- One ICU admission was reported in the past week for COVID-19, but none were reported for flu or RSV.
- Laboratory specimens testing positive for COVID-19 rose to 6.6% this week, the highest percentage seen so far this year. Percent positivity for flu was 0.4%, and was approximately 0.1% for RSV.
- Wastewater detections for flu and RSV remain at baseline levels. SARS-CoV-2 detections have plateaued after increasing since the beginning of July.
- CDC's [core recommendations](#) for *individuals* include staying up to date with all recommended respiratory virus [vaccines](#), practicing good respiratory hygiene (covering your cough, washing your hands), taking steps for cleaner air, and using precautions to prevent the spread of respiratory viruses when you are sick. This means staying home until you've been fever-free for 24 hours and your symptoms are getting better. CDC also recommends individuals are familiar with treatment options for flu and COVID-19, especially if you are at [high risk](#) for severe outcomes.
- CDC's [core recommendations](#) for *organizations* include supporting vaccination efforts (like hosting a clinic or providing time off for vaccination and recovery), encouraging good respiratory hygiene with posters and adequate hand-washing supplies, taking steps for cleaner air, and supporting time off for individuals to stay home when sick or to seek treatment.
- Respiratory activity has returned to baseline after the winter season, though [core strategies](#) to prevent illness should be practiced year-round. We are seeing early signs of increasing COVID-19 activity; summer waves are typical for COVID-19.

We would like to thank all of our surveillance partners for their help in collecting this information! Additional details on our methods can be found [here](#).

RESPIRATORY VIRUS SURVEILLANCE REPORT

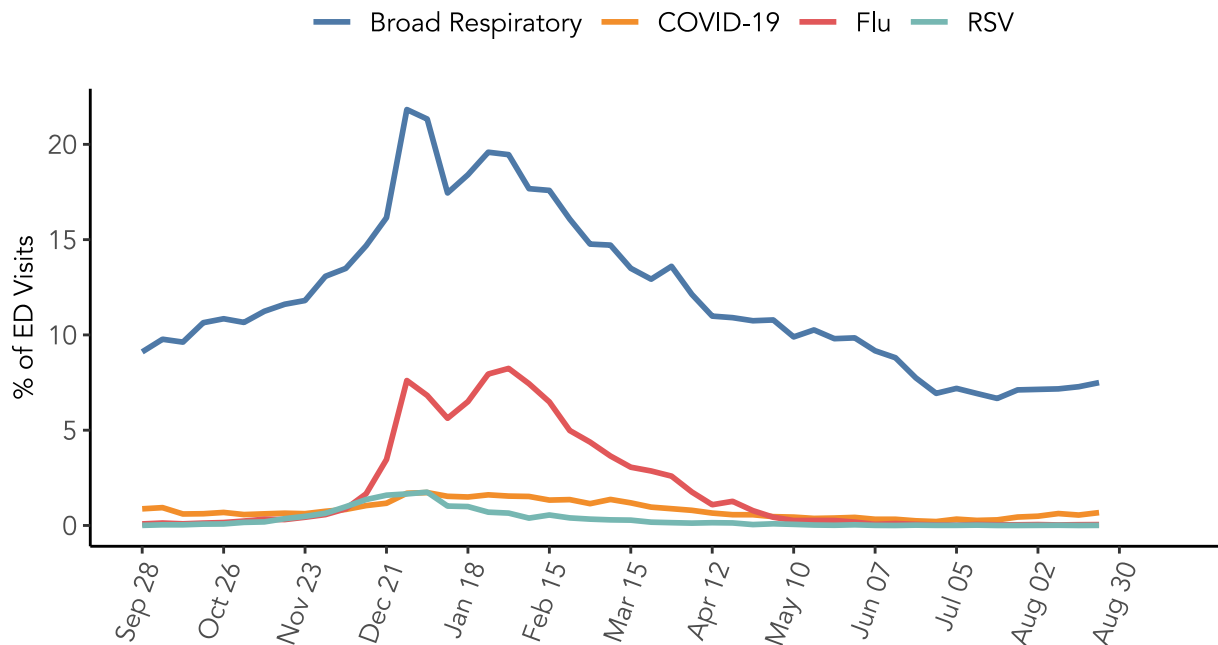
Week 34: Aug 17-Aug 23, 2025



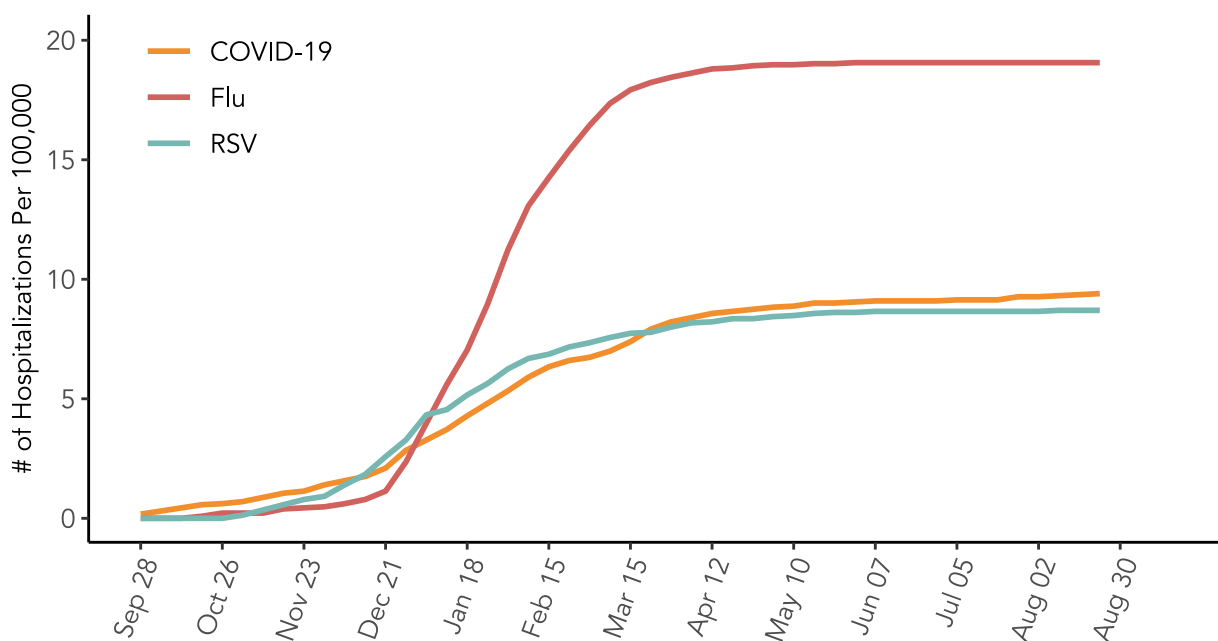
Cook County DEPT. of
Public Health

**BUILDING
HEALTHIER
COMMUNITIES**

Emergency Rooms Visits by Respiratory Diagnosis



Cumulative ICU Admission Rate for Reportable Respiratory Viruses



RESPIRATORY VIRUS SURVEILLANCE REPORT

Week 34: Aug 17-Aug 23, 2025

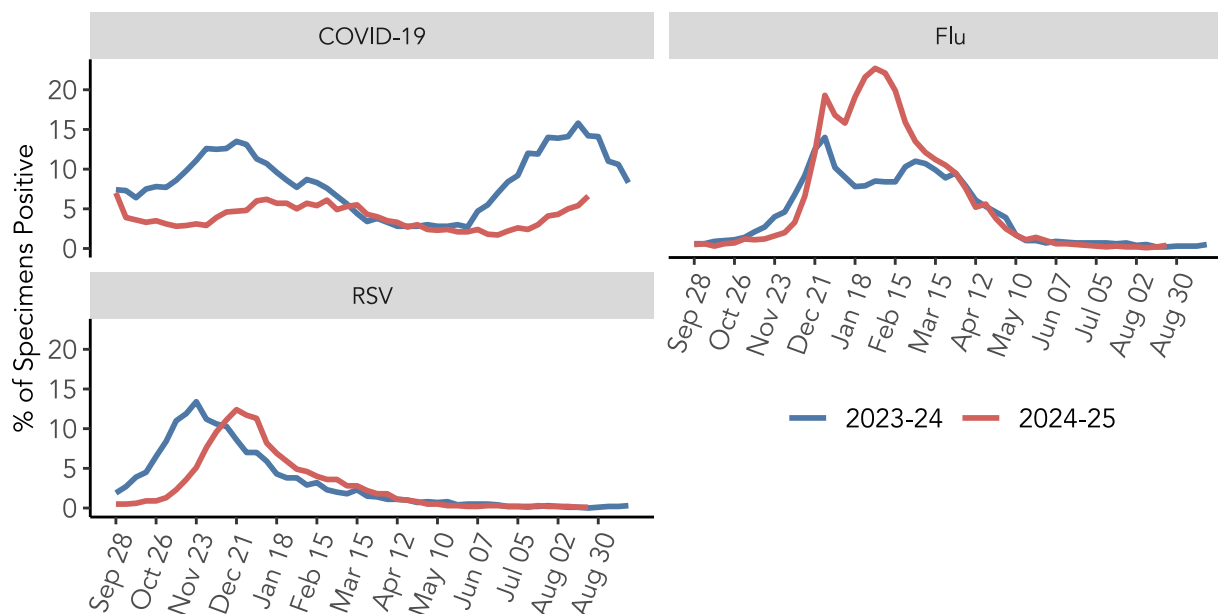


Cook County DEPT. of
Public Health

**BUILDING
HEALTHIER
COMMUNITIES**

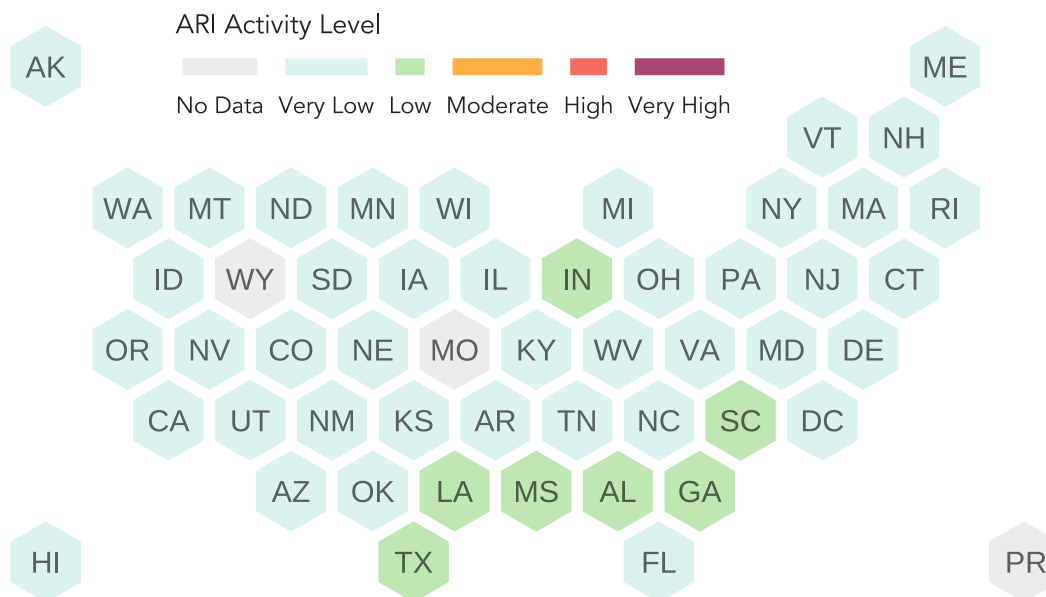
Percent Positivity by Respiratory Virus

Laboratories contributing data differ by pathogen. Lab data may not be comparable between viruses. Graphics are better used to look at trajectory for a given virus over time.



CDC Acute Respiratory Illness Activity Levels by State

Data for the week ending 2025-08-23, most recent CDC data available



RESPIRATORY VIRUS SURVEILLANCE REPORT

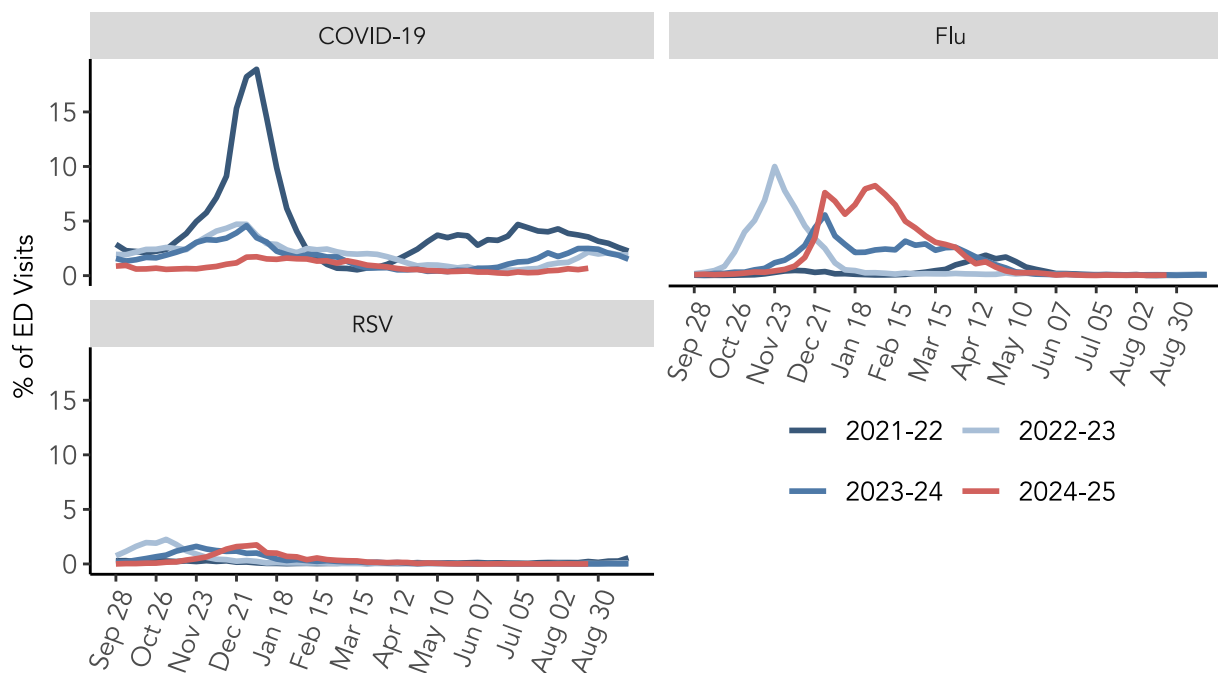
Week 34: Aug 17-Aug 23, 2025



Cook County DEPT. of
Public Health

BUILDING
HEALTHIER
COMMUNITIES

Emergency Rooms Visits by Season and Diagnosis



Emergency Room Visits by Age and Diagnosis

