

RESPIRATORY VIRUS SURVEILLANCE REPORT

Week 36: Aug 31-Sep 06, 2025



Cook County DEPT. of
Public Health

BUILDING
HEALTHIER
COMMUNITIES

Purpose: This report describes current trends in suburban Cook County for COVID-19, influenza, and RSV. Selected graphics are presented on pages 2-4. For complete surveillance data on these pathogens, please visit our [respiratory dashboard](#).

Key Points:

COVID-19 activity is **low** and increasing. **Influenza** activity is **minimal** and stable. **RSV** activity is **minimal** and stable.

- Activity has been elevated for COVID-19 from minimal to low, but flu and RSV remain minimal.
- Emergency room visits associated with COVID-19 continue to increase, especially for children under 5. Hospital admissions are increasing for COVID-19, especially in people over 65, but are low for flu and RSV.
- Five ICU admissions were reported in the past week for COVID-19, but none were reported for flu or RSV.
- Laboratory specimens testing positive for COVID-19 rose to 6.7% this week, the highest percentage for this pathogen observed so far this year. Percent positivity for both flu and RSV was 0.1%.
- Wastewater detections for flu and RSV remain at baseline levels; however, SARS-CoV-2 detections have increased.
- CDC's [core recommendations](#) for *individuals* include staying up to date with all recommended respiratory virus vaccines, practicing good respiratory hygiene (covering your cough, washing your hands), taking steps for cleaner air, and using precautions to prevent the spread of respiratory viruses when you are sick. This means staying home until you've been fever-free for 24 hours and your symptoms are getting better. CDC also recommends individuals are familiar with treatment options for flu and COVID-19, especially if you are at [high risk](#) for severe outcomes.
- CDC's [core recommendations](#) for *organizations* include supporting vaccination efforts (like hosting a clinic or providing time off for vaccination and recovery), encouraging good respiratory hygiene with posters and adequate hand-washing supplies, taking steps for cleaner air, and supporting time off for individuals to stay home when sick or to seek treatment.
- Respiratory activity has started to pick up in suburban Cook County, especially for COVID-19. September and October are ideal times to discuss [respiratory immunizations](#) with your physician and make a plan to get vaccinated.

We would like to thank all of our surveillance partners for their help in collecting this information! Additional details on our methods can be found [here](#).

RESPIRATORY VIRUS SURVEILLANCE REPORT

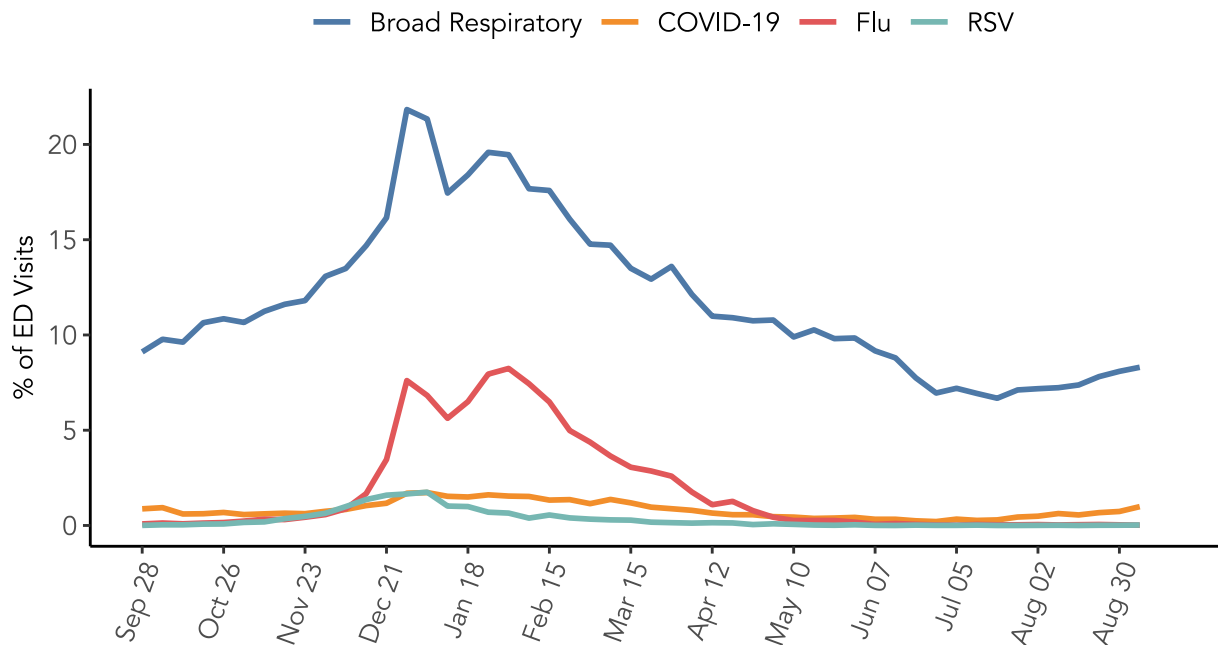
Week 36: Aug 31-Sep 06, 2025



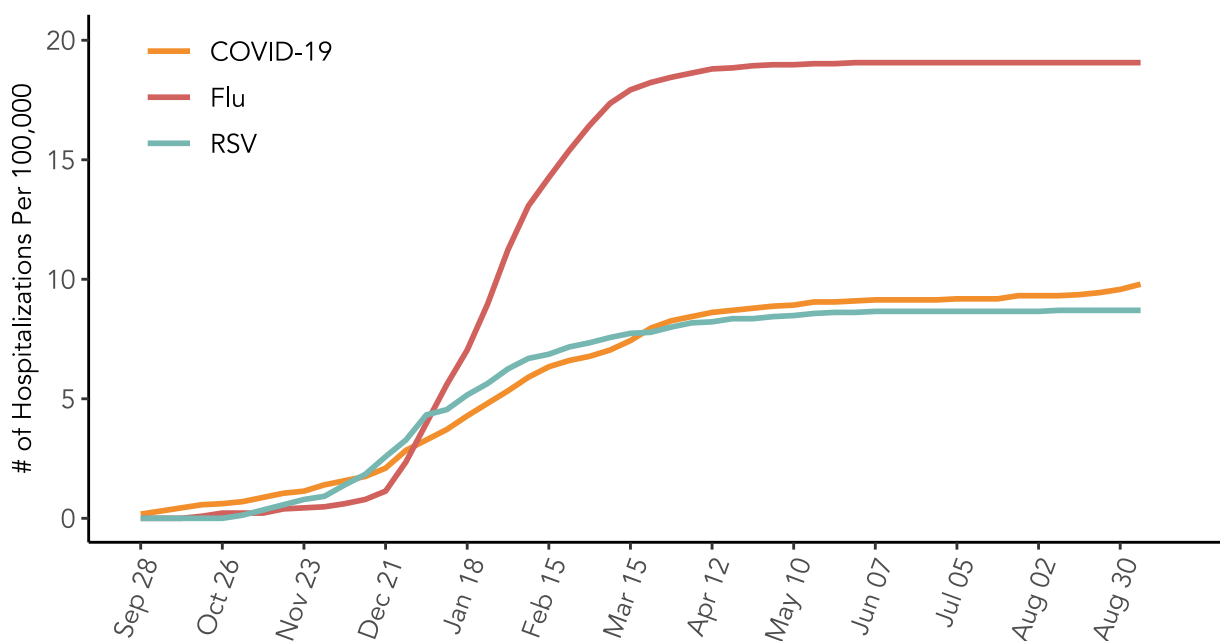
Cook County DEPT. of
Public Health

**BUILDING
HEALTHIER
COMMUNITIES**

Emergency Rooms Visits by Respiratory Diagnosis



Cumulative ICU Admission Rate for Reportable Respiratory Viruses



RESPIRATORY VIRUS SURVEILLANCE REPORT

Week 36: Aug 31-Sep 06, 2025

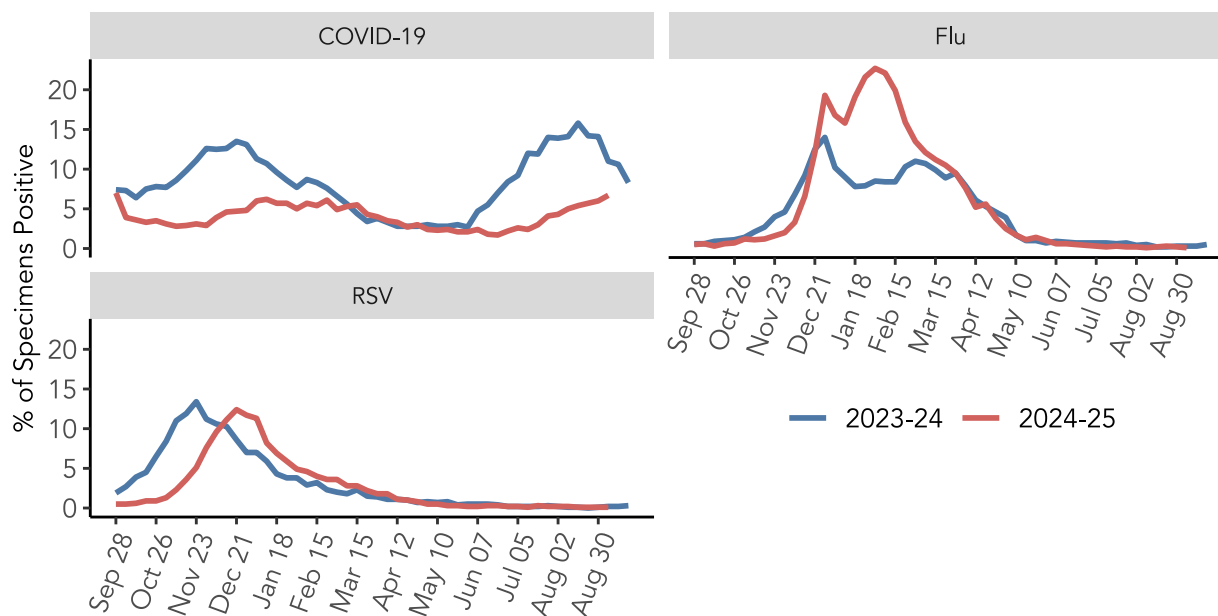


Cook County DEPT. of
Public Health

**BUILDING
HEALTHIER
COMMUNITIES**

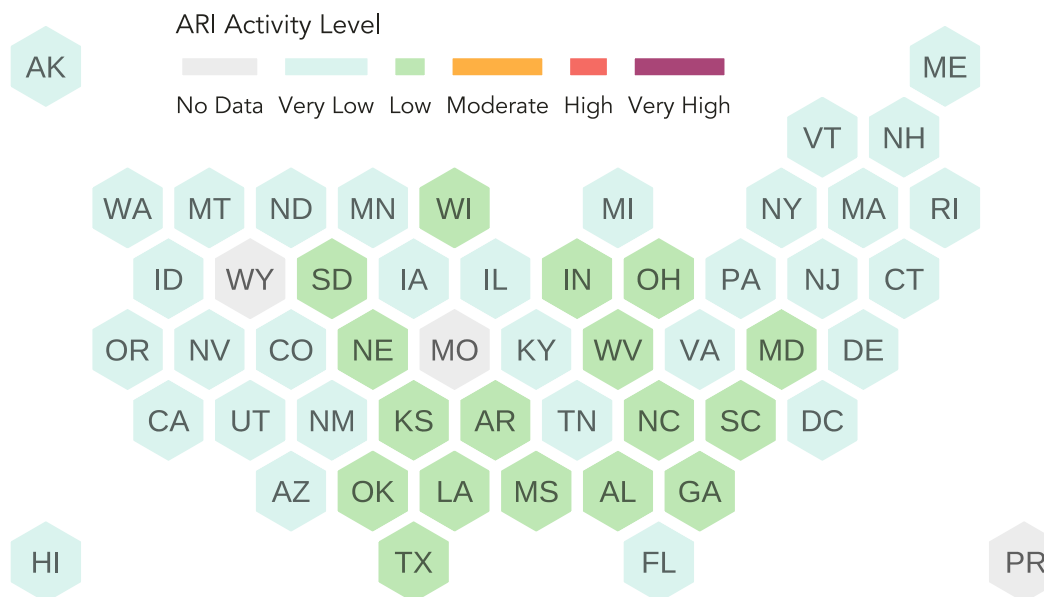
Percent Positivity by Respiratory Virus

Laboratories contributing data differ by pathogen. Lab data may not be comparable between viruses. Graphics are better used to look at trajectory for a given virus over time.



CDC Acute Respiratory Illness Activity Levels by State

Data for the week ending 2025-09-06, most recent CDC data available



RESPIRATORY VIRUS SURVEILLANCE REPORT

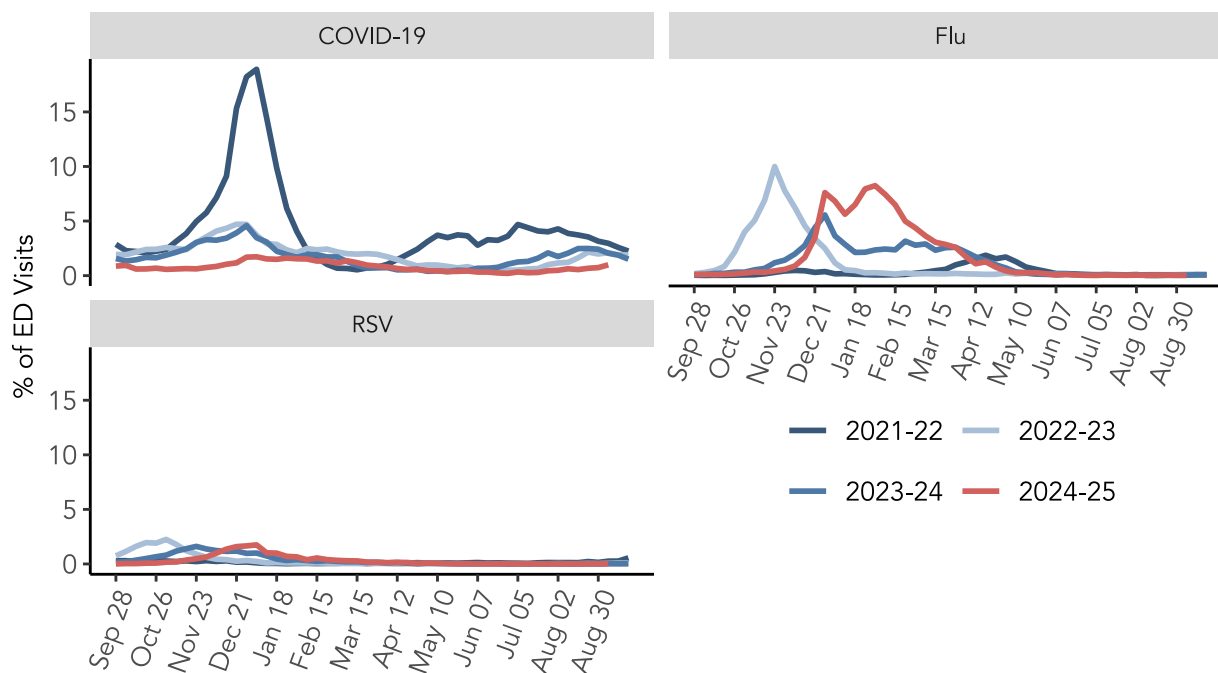
Week 36: Aug 31-Sep 06, 2025



Cook County DEPT. of
Public Health

**BUILDING
HEALTHIER
COMMUNITIES**

Emergency Rooms Visits by Season and Diagnosis



Emergency Room Visits by Age and Diagnosis

